

# PROCYON™ INFRASTRUCTURE



Part of OCC's Procyon™ family of high performance, easy to install data center solutions

Procyon solutions have been carefully constructed and offer a complete system approach that is rarely seen in the industry. OCC has developed a solution that allows individual components to work better when combined with complementary elements. Procyon accessories complement the integral components of the Procyon line and enhance the performance, functionality and versatility of the system.

## Procyon Data Center Cabinet

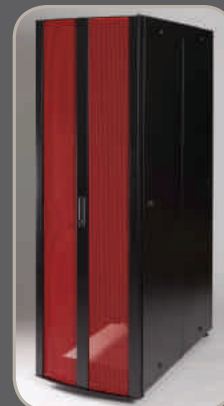
Optical Cable Corporation's Data Center Cabinet provides mounting, storage, power and cooling to equipment in any Data Center. The structural integrity and modular design provide flexibility and adaptability to active and passive equipment, keeping the equipment and associated cabling organized, powered and cool while providing selective degrees of security. The Cabinet is ideal for any equipment room, MDF, central office or processing facility.

### Features & Benefits:

- Two widths – 24" and 30"
- 45RU accommodation
- 42" extended cabinet depth to accommodate expanding depth requirements
- Door hinges can be mounted on either left or right sides for dynamic door swing
- Side panels are hinged for easy access inside the cabinet
- Heavy-duty oversized castors and leveling legs
- Fully welded 14-gauge steel frame supports up to 2,500 lbs.
- Front and back mounting rails can be freely adjusted for more depth, without requiring tools
- 6 1/2" rear clearance for PDU cable exit
- Angled PDU mounting bracket for reduced power cable strain and easy inspection of visual telemetry during rack operation
- Generic PDU mounting bracket accommodates popular vendor components
- Doors available with 63% perforation for enhanced airflow or optional Plexiglas® for high visibility preferences
- Unique 2-point latch system in the middle of the doors
- 4" roof knock-outs for increased cable entry capacity
- Vertical chimney system ready with available fan kit
- 24" cabinet to 30" cabinet conversion available



Sliding top only available for 24" wide version.



(Plexiglas® is a Registered Trademark of Rohm & Haas)

Part of OCC's Procyon™ family of high performance, easy to install data center solutions

## Cabinet Ordering Information

CABINET FRAME			
OCC PART NUMBER	DIMENSIONS (HXWXD IN IN.)	DIMENSIONS (HXWXD IN MM)	DESCRIPTION
CDC4230	75.75 x 31.5 x 44	1950 x 800 x 1120	42RU Black frame with rack unit markings screened on the mounting rails
CDC4224	75.75 x 24.5 x 44	1950 x 620 x 1120	42RU Black frame with rack unit markings screened on the mounting rails
CDC4530	82 x 31.5 x 44	2080 x 800 x 1120	45RU Black frame with rack unit markings screened on the mounting rails
CDC4524	82 x 24.5 x 44	2080 x 620 x 1120	45RU Black frame with rack unit markings screened on the mounting rails

\* Note: Additional cabinet heights available, including 42 RU. Contact OCC Inside Sales for more information.

OPTION CODES						
CABINET COLOR	FRONT DOOR	PERF INSERT COLORS	LEFT SIDE	RIGHT SIDE	ROOF	REAR DOOR
<b>01</b> – Black	<b>P</b> – Perf	<b>01</b> – Black	<b>L</b> – Locking	<b>L</b> – Locking	<b>SL</b> – Sliding *	<b>P</b> – Perf
<b>02</b> – White	<b>A</b> – Acrylic	<b>02</b> – White	<b>H</b> – Hinged Kit	<b>H</b> – Hinged Kit	<b>K</b> – Knock-out	<b>S</b> – Solid (optional)
	<b>0</b> – None	<b>03</b> – Blue	<b>B</b> – Bolt-on	<b>B</b> – Bolt-on	<b>0</b> – None	<b>0</b> – None
	<b>S</b> – Solid	<b>04</b> – Green	<b>0</b> – None	<b>0</b> – None		
		<b>05</b> – Red				
		<b>06</b> – Yellow				

\* Note: Sliding roof option is for 24" wide only.

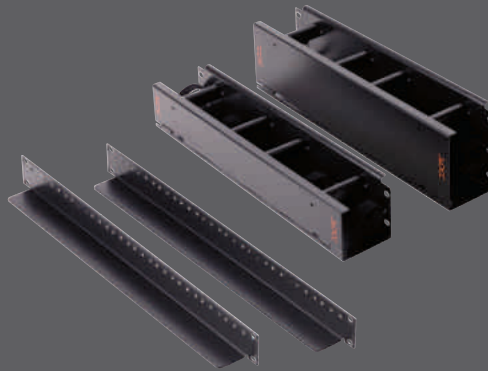
Example: CDC4530-01P05HHKP – 45RU, 30" wide, black, perf front door w/red insert, hinged side panels, both sides, knock-out top, perf rear door.  
 CDC4530-01S00KP – 45RU, 30" wide, black, solid front door, no side panels, knock-out top, perf rear door.

## Vertical Mounting Kit

The Procyon Vertical Mounting Kit allows Procyon fiber and copper panels to be mounted vertically to allow ease of patching and provide visual continuity to active hardware and connectivity systems. The kit comes with two lateral brackets. Vertical mounting provides a direct port orientation synergy with vertically oriented core/aggregate switching hardware.

### Features & Benefits:

- Accommodates 10 RU of horizontal patch panels vertically oriented
- 2 and 3RU horizontal cable managers
- Velcro straps and cable management spools
- Magnetic latches for cable manager covers



## Ordering Information

OCC PART NUMBER	DESCRIPTION
CDC-HRAKIT	Kit, Horizontal rack adaptors, 10 position, Procyon
CDC-HCM2U	2U Horizontal managers for fiber applications
CDC-HCM3U	3U Horizontal managers for copper and mixed applications

Part of OCC's Procyon™ family of high performance, easy to install data center solutions

## Cable Management & Thermal Barrier Accessory Kit

The Procyon Vertical Cable Management and Thermal Isolation barrier is the best accessory to keep data center cabinets organized and servers operating efficiently. The Cable Management and Thermal Barrier kit is available for both the 24" and 30" cabinets.

### Features & Benefits:

- Isolates cool air from the front of cabinet from exhaust exiting rear of active hardware
- Combination of Velcro straps and spools for cable management
- Hinged doors for cable concealment
- Removable pass-through plugs allowing cabling to transition from the front of the cabinet to the rear
- Magnetic latching mechanism for the cable management doors



### Ordering Information

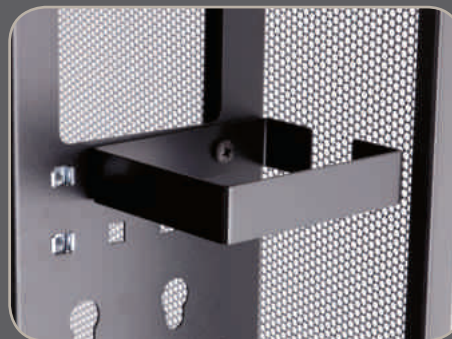
OCC PART NUMBER	DESCRIPTION
CDC-VCM30R	Vertical cable management, 30" cabinet, right
CDC-VCM30L	Vertical cable management, 30" cabinet, left
CDC-VCM24R	Vertical cable management, 24" cabinet, right
CDC-VCM24L	Vertical cable management, 24" cabinet, left
CDC-BLOCK	Top/Bottom ventilation boundary plates

## Rear Cable Management

The Procyon rear cable management options provide organization on the rear of the cabinets for connectivity and powering server and storage hardware.

### Features & Benefits:

- Cable loop organizers provide travel space from cable entering the top of the cabinet to servers and storage units located down below.
- Side mounting spools for excessive loop storage
- A rear mounting cable tray for specific routing of critical fiber optic cables at the rear of the cabinet
- Auxiliary support for slack storage bracket and cable clamp mounting



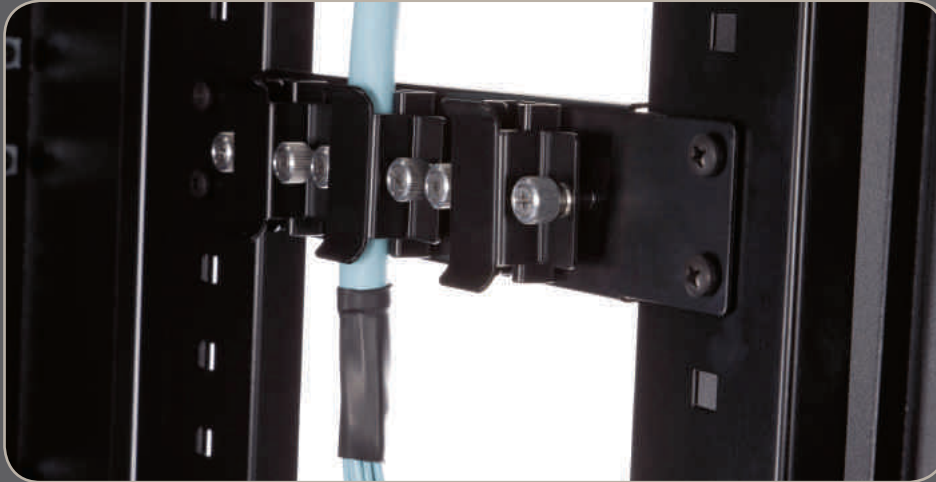
### Ordering Information

OCC PART NUMBER	DESCRIPTION
CDC-CO	(10) Cable organizer hoops, rear, data center cabinet
CDC-SSBKT	Cable slack storage hoop bracket, data center cabinet
CDC-SB	Auxiliary support bar, data center cabinet

Part of OCC's Procyon™ family of high performance, easy to install data center solutions

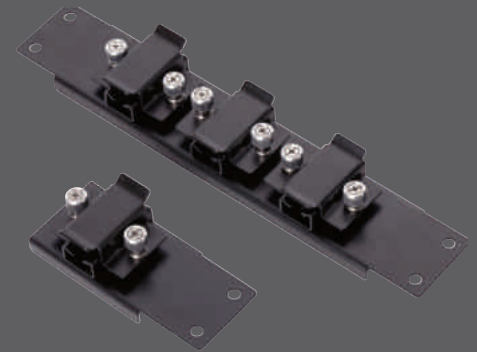
## Cable Clamp Kit

Secure Procyon pre-terminated cable assemblies with Cable Clamp kits designed specifically for use with the Procyon family of products. Available for a single cable or a group of 3 on a single back plate, the cable clamps mount to vertical rails added to either side of the Procyon 24" or 30" data center cabinet.



### Features & Benefits:

- Accommodates cable ODs up to 0.650 inches
- Available in 1 or 3 clamps per back plate
- Requires the vertical internal accessory mounting rails



### Ordering Information

OCC PART NUMBER	DESCRIPTION
CDC-CSR1	Cable suspension bracket, fiber, 1 clamp
CDC-CSR3	Cable suspension bracket, fiber, 3 clamps
CDC-SB	Auxiliary support bar, data center cabinet



## Chimney Accessory Kit

For added efficiency of the cold aisle in the data center, the Procyon cabinet system is ready for ducted return systems with an easy-to-attach chimney.

### Features & Benefits:

- Provides a ducted return for both 24" and 30" Procyon cabinets
- Attaches to the top rear of the cabinet
- Removable roof knock-outs provide airflow to chimney from Procyon cabinets

### Ordering Information

OCC PART NUMBER	DESCRIPTION
CDC-HVACBKT	Chimney Kit