

DATA CENTER CABINET

Providing Mounting, Storage, Power and Cooling to Equipment in Any Data Center

Introducing Optical Cable Corporation's new Data Center Cabinet, providing mounting, storage, power and cooling to equipment in any Data Center. The structural integrity and modular design provide flexibility and adaptability to active and passive equipment, keeping the equipment and associated cabling organized, powered and cool while providing selective degrees of security. OCC's Data Center Cabinet is ideal for any equipment room, MDF, central office or processing facility.

Features & Benefits:

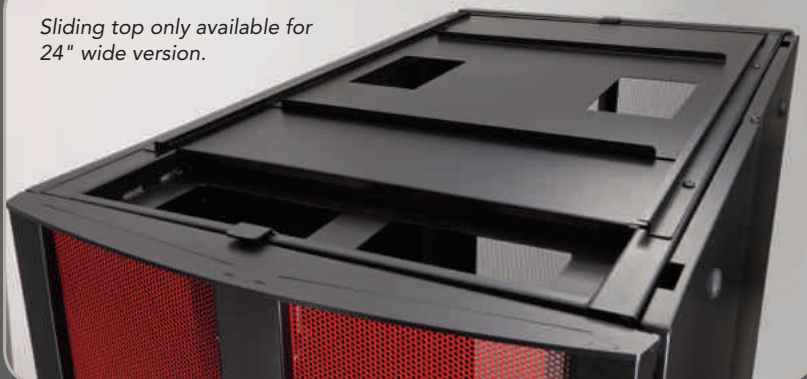
- Two widths – 24" and 30"
- 45RU accommodation
- 45" extended cabinet depth to accommodate expanding depth requirements
- Door hinges can be mounted on either left or right sides for dynamic door swing
- Side panels are hinged for easy access inside the cabinet
- Heavy-duty oversized castors and leveling legs
- Fully welded 14-gauge steel frame supports up to 2,500 lbs.
- Front and back mounting rails can be freely adjusted for more depth, without requiring tools
- 6 ½" rear clearance for PDU cable exit
- Angled PDU mounting bracket for reduced power cable strain and easy inspection of visual telemetry during rack operation
- Generic PDU mounting bracket accommodates popular vendor components
- Doors available with 63% perforation for enhanced airflow or optional Plexiglas[®] for high visibility preferences
- Unique 2 point latch system in the middle of the doors
- 4" roof knock-outs for increased cable entry capacity
- Vertical exhaust system ready with available fan kit
- 24" cabinet to 30" cabinet conversion available
- Locks and latches standard

Applications:

- Data Centers
- Co-Location Facilities
- Equipment Rooms
- MDF
- Central Offices
- Processing Facilities



Sliding top only available for 24" wide version.



(Plexiglas[®] is a Registered Trademark of Rohm & Haas)

DATA CENTER CABINET



Providing Mounting, Storage, Power and Cooling to Equipment in Any Data Center

Structured Cabling Solutions for Data Centers



Ordering Information

CABINET FRAME

OCC PART NUMBER	DESCRIPTION
CDC4530	45RU X 30" Black frame with rack unit markings screened on the mounting rails
CDC4524	45RU X 24" Black frame with rack unit markings screened on the mounting rails

OPTION CODES

CABINET COLOR	FRONT DOOR	PERF INSERT COLORS	LEFT SIDE	RIGHT SIDE	ROOF	REAR DOOR
01 – Black	P – Perf	01 – Black	L – Locking	L – Locking	SL – Sliding *	P – Perf
02 – White	A – Acrylic	02 – White	H – Hinged Kit	H – Hinged Kit	K – Knock-out	S – Solid (optional)
	O – None	03 – Blue	B – Bolt-on	B – Bolt-on	O – None	O – None
	S – Solid	04 – Green	O – None	O – None		
		05 – Red				
		06 – Yellow				

* Note: Sliding roof option is for 24" wide only.

Example: CDC4530-01P05HHKP – 45RU, 30" wide, black, perf front door w/red insert, hinged side panels, both sides, knock-out top, perf rear door.
CDC4530-01S00KP – 45RU, 30" wide, black, solid front door, no side panels, knock-out top, perf rear door.

Warranty

All Data Center Cabinets are covered by OCC's standard 15-year product assurance warranty, guaranteeing the product to be free from defects in material and workmanship.



CORPORATE HEADQUARTERS

5290 Concourse Drive | Roanoke, VA 24019 | USA
Phone: +1-540-265-0690 | 800-622-7711
Fax: +1-540-265-0724