

PROCYON™ COPPER SYSTEM



Part of OCC's Procyon™ family of high performance, easy to install data center solutions

The Procyon™ Copper system by Optical Cable Corporation is designed for high-density copper connectivity in the data center, and to be interchangeable with the fiber panels for maximum flexibility for the end user. Each copper module provides 48 Cat6A ports in a single bay. The Copper Panel mates with 12 pre-terminated high-density copper cable assemblies, each providing cabling for 4 RJ45 ports under a single wrap. OCC's rugged and shielded cable assembly allows for fast installation of high speed copper interconnects. An easy to remove metal pulling eye is incorporated to aid in cable installation.

Panel Features & Benefits:

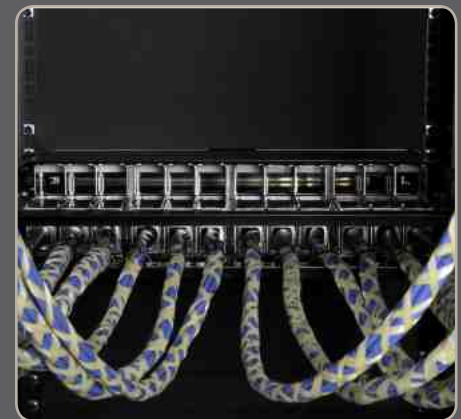
- Exceeds TIA Cat6A cabling performance, depending on cable selection
- 48 Ports in 1RU to match high-density switching hardware
- Mates with pre-terminated high-density copper cable assemblies for easy installation and reliable performance
- Copper panel slides forward for easy access to patch field
- Integrated equipment/patch cord management features
- Integrated rear cable management.
- Front panel port identification labels
- Front panel flips up, concealing cabling for neat appearance



Procyon Copper panel with integrated Cable Management

Panel Applications:

- High-density
- Data Center
- Use Procyon fiber panel for server/storage cabinets
- Use vertical panel mounting kit for switching cabinets
- PoE and PoE+
- Video surveillance
- IEEE 10GBASE-T Ethernet compliant



Copper Panel with Cable Manager

PROCYON™
part of the Procyon
family of data center solutions

Cable Assembly Features & Benefits:

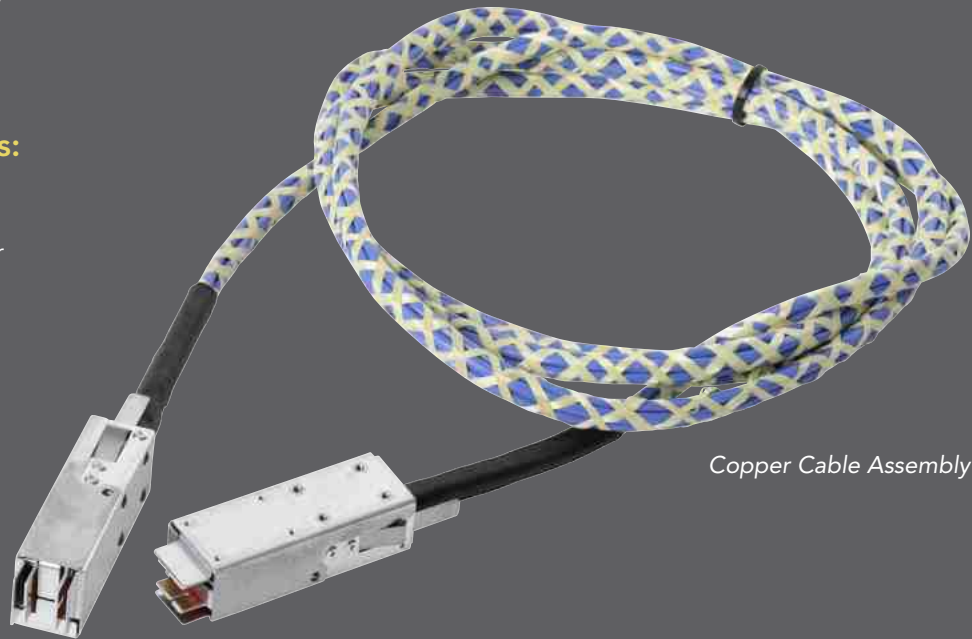
- Four 4-pair cables are pre-terminated at the specified length and ready to install
- TIA Cat6A performance for the highest bandwidth requirements
- Metal pulling eye protects the connector mating interface during installation
- Mates with OCC Copper modules
- Designed with individually shielded pair cables in mind, the high-density copper cable connector is compatible with UTP, F/UTP and S/FTP cables in Cat5e, Cat6, Cat6A and Cat7A configurations



Procyon Copper Cable Assembly with pulling eye

Cable Assembly Applications:

- Used with Fiber Panel for Server/Storage Cabinets
- Used with Vertical Panel Chassis for Switching Cabinets
- Cat6A performance for IEEE 10GBASE-T and higher data rates



Copper Cable Assembly

Ordering Information

PART NUMBER	DESCRIPTION	HEIGHT	WIDTH	DEPTH	TEMPERATURE RANGE
PROC1U	Panel, Copper, 48 port, 1 RU	1 RU	19"	28.375"	-40° to +120° C
PROC4G6A-“xxx”*	Copper Cable Assembly w/pulling eye	1.445"	1.152"	5.501" total (4.308" w/o pulling eye)	-40° to +120° C

* Replace "xxx" with length in feet