

# FIELD TERMINABLE PLUG

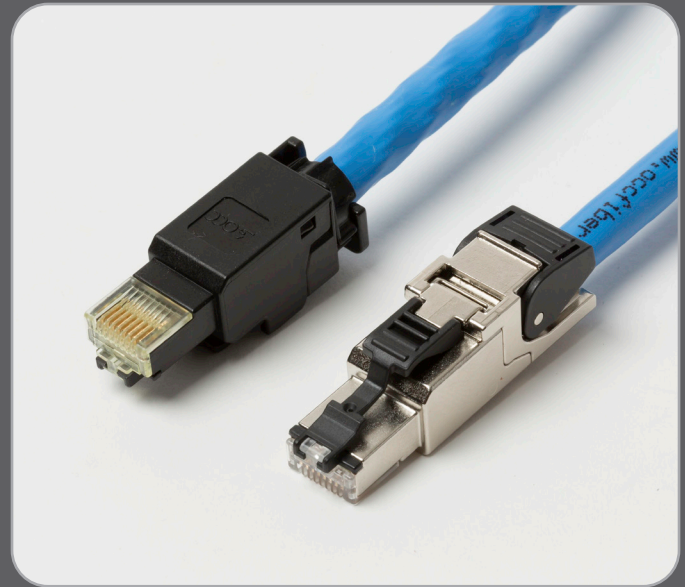
## Cat 6A Field Terminable Plug

The dramatic growth of wireless access points and other IP-enable devices, such as surveillance cameras and building automation devices has created a demand for a field installable modular plug that is simple to terminate and meets Cat6A performance requirements.

OCC's Category 6A field terminable plug is designed to support 10 Gigabit networks and can be easily terminated using parallel jaw pliers. Termination is accomplished by simply inserting the conductors into the wire manager, squeezing the wire manager with parallel jaw pliers to terminate the conductors and inserting wire manager into the plug housing. All eight conductors are simultaneously terminated when the wire manager is squeezed. This process ensures consistent, reliable terminations.

The Field Term Plug meets TIA-568.2-D Category 6A component performance and may be used in Cat5e/6 and 6A Modular Plug Terminated Links.

Available in both shielded and unshielded versions, OCC's Field Terminable Plugs are backed by OCC's 25-year MDIS Direct Attach System Performance warranty when used as part of an end-to-end OCC copper cabling solution.



### Specifications:

- ANSI/TIA-568.2-D Category 6A
- IEC 60603-7-41
- Supports IEEE 802.3an 10GBASE-T
- Supports IEEE 802.3bt POE
- Accommodates 22-24 AWG conductors
- Modular Interface: 750 mating cycles
- 1000 VDC Dielectric Withstand
- Current Rating (50°C): 1A
- 500MΩ Insulation resistance
- Temperature range: -40°C to 70°C
- Temperature range: -40°C to 85°C (shielded version)
- UL 1863

### Applications

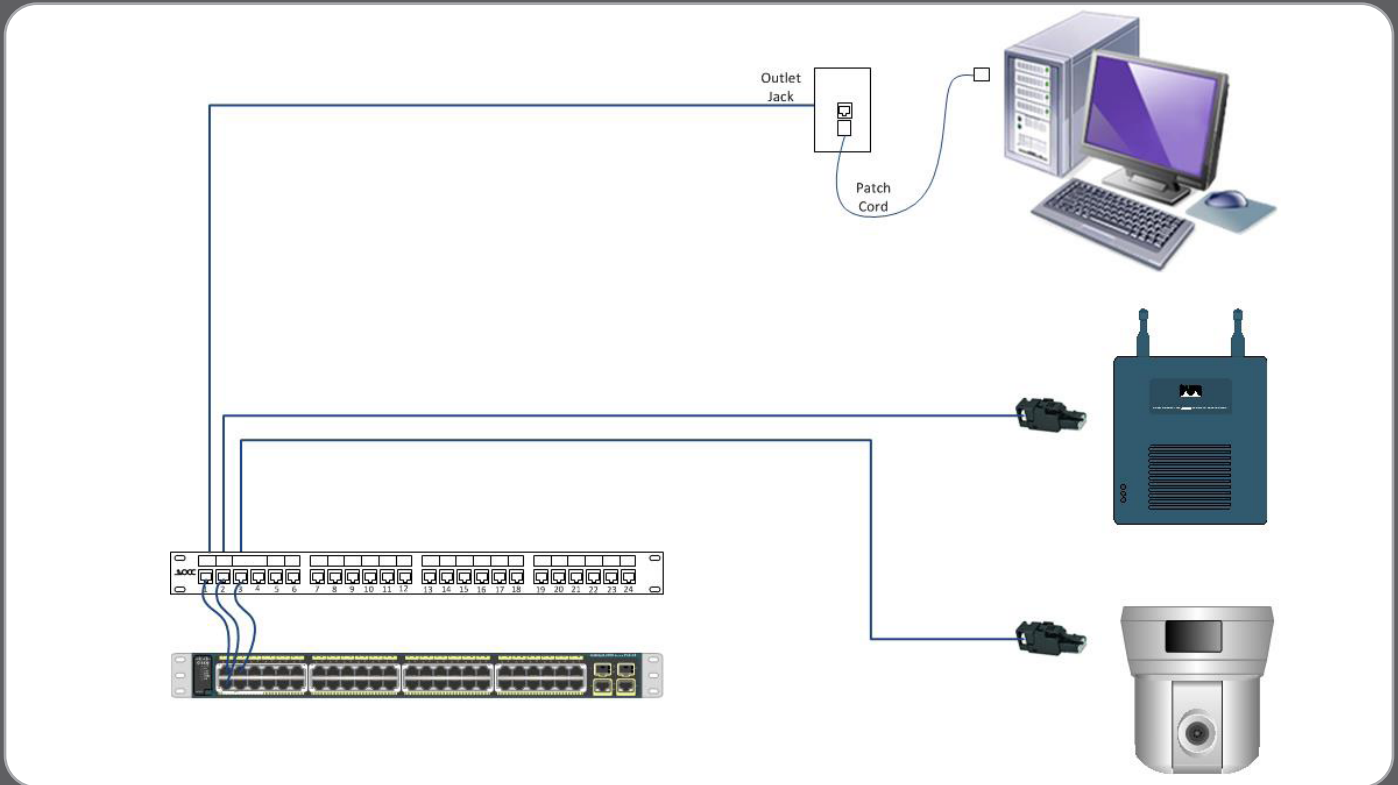
- Wireless Access Points
- IP Security Cameras
- IP Access Control
- IP Audio
- Building Automation Devices
- 10GBASE-T Direct Attach Cable Assemblies
- Transition Cables

### Ordering Information:

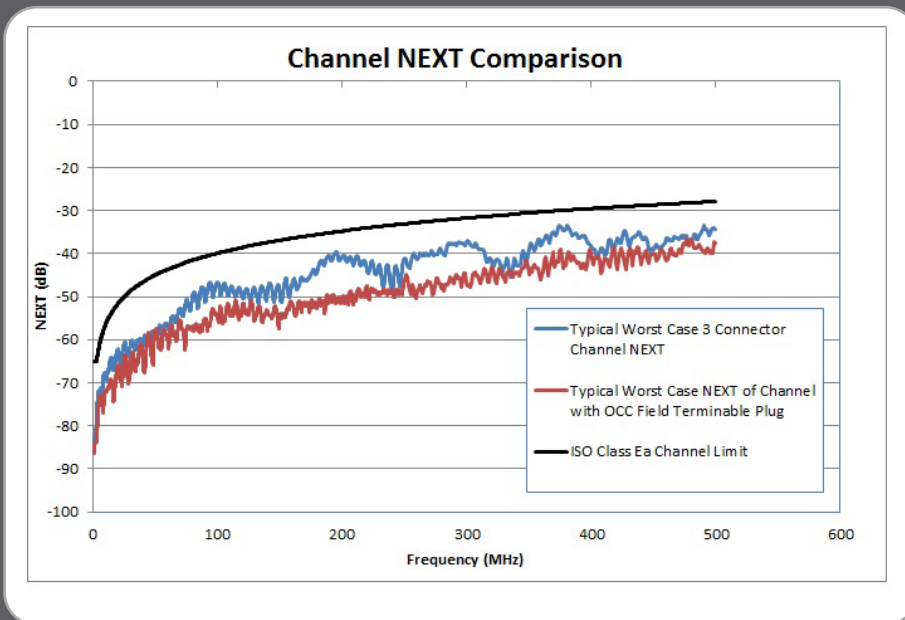
| PART NUMBER | DESCRIPTION                                  |
|-------------|--|
| OCCUFP6A    | Category 6A unshielded field terminable plug |
| OCCSFP6A    | Category 6A shielded field terminable plug   |
| FPTAC6AKS   | Category 6A field plug test adapter, white   |
| FPJP        | Parallel Jaw Pliers                          |

# FIELD TERMINABLE PLUG

## Cat 6A Field Terminable Plug



Direct link attach configuration



The field terminable plug is typically used in lieu of an outlet jack and patch cord at the device end. The graph (left) illustrates Near-End Crosstalk (NEXT) results of a conventional 3-connector channel with outlet jack and patch cord at the device end versus the direct attach method using the OCC field plug. The OCCUF6A delivers 5dB greater NEXT margin across the frequency band than the conventional channel.

*\*Actual results may vary*