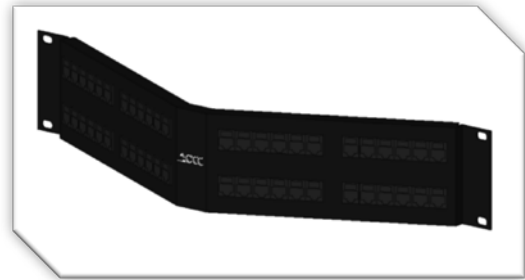


# REVIT CONTENT GUIDE

**Manufacturer:** Optical Cable Corporation  
**Description:** Angle Patch Panel  
**File:** Data\_Device-Patch\_Panel-OCC-ACC\_Series.rfa  
**Type Catalog:** Not Applicable  
**Rendering file:** Not Applicable  
**Schedule file:** Schedule-Data\_Device-Patch\_Panel-OCC-ACC\_Series.rvt



Parameter	Value
<b>Constraints</b>	
Level	Level 1
Host	Level : Level 1
Offset	0' 0"
Moves With Nearby Elements	<input type="checkbox"/>
<b>Construction</b>	
Termination Type is RJ21X	<input checked="" type="checkbox"/>
Termination Type is 110	<input type="checkbox"/>
Termination Type	RJ21X
Shielding Type is UTP	<input checked="" type="checkbox"/>
Shielding Type is Shielded	<input type="checkbox"/>
Shielding Type	UTP
Part Number	ACC48B/25VO1
Mounting	1' 7"
Modular Jack Count	48
Cable Type is Cat 6	<input type="checkbox"/>
Cable Type is Cat 5e	<input checked="" type="checkbox"/>
Cable Type	Cat 5e
<b>Electrical - Loads</b>	
Panel	
Circuit Number	
Electrical Data	
<b>Identity Data</b>	
Equipment Number	
Comments	
Mark	
<b>Phasing</b>	
Phase Created	New Construction
Phase Demolished	None

## Instance Properties

Parameter	Value
<b>Construction</b>	
Rack Spaces RU	2.000000
Port Count	48
<b>Materials and Finishes</b>	
Patch Panel Frame	Plastic - OCC - Frame Black
Modular Jack	Plastic - OCC - Angled Jack Blac
<b>Dimensions</b>	
Width	1' 7"
Height	0' 1 187/256"
Depth	0' 4 19/128"
<b>Identity Data</b>	
URL	<a href="http://www.occfiber.com/main">http://www.occfiber.com/main</a>
UL Rating	UL94-VO
Model	ACC4888
Manufacturer	Optical Cable Corporation
For More Information	<a href="http://www.bimadvent.com">http://www.bimadvent.com</a>
Family Version	1.0.0
Equipment Abbreviation	PP
Description	Angled Patch Panel, 48 Port
Created By	Intelligent Building Design Reso
Copyright	Copyright © 2011 Optical Cable
Assembly Code	
Keynote	
Type Comments	
Assembly Description	
Type Mark	
Cost	
OmniClass Number	23.85.50.21
OmniClass Title	Cable Transmission and Reception

## Type Properties

## **Loading into the Project:**

One family file is supplied and may be loaded into the project through all traditional methods. The file contains geometry that represents the Optical Cable Corporation Angle Patch Panels. No host is required for project placement. It is recommended that the family be placed in a Floor Plan or Section View and be aligned to a compatible OCC rack mount system. There is no model geometry displayed in plan view in all levels of detail. This improves graphical performance as the family is copied many times.

## **Project Behavior:**

### **Instance Parameters:**

In the “Instance Parameters”, the user can control the following options:

- Termination Type*: Type 110, Type RJ21X
- Shielding Type*: Type UTP, Type Shielded
- Cable Type*: Type 5e, Type 6
- Equipment Number* for annotation tagging.

### **Type Parameters:**

The family contains three types whose values do not need to be modified by the user.

**ACC2888**

**ACC4888 – 1 RU**

**ACC4888 – 2 RU**

Within the type properties the user will find useful information for scheduling purposes. In “Identity Data” the user will also find information specific to OCC, and the model. I.e.: family revision information, OCC copyright information, model description and Omni class designation. \*See scheduling description below.

### **Clearance Areas:**

No clearance areas are defined in the family file.

### **RU Alignment:**

Horizontal and vertical RU references exist in this family to assist the user in placing this interior component to the mounting rails. Compatible components may be placed in elevation/section views that face the front of the enclosure and they should snap to the references. These references will display in views that have any course level of detail set. It is recommended that the user first place rack accessories (RMU) in plan view, then copy vertically in a parallel section view.

## **Rendering:**

When the family file is loaded into the project, standard OCC materials are imported. These materials pertain mostly to the patch panel.

## **Scheduling:**

Optical Cable Corporation products may be scheduled utilizing the schedule view in the given project file “Schedule-Data\_Device-Patch\_Panel-OCC-ACC\_Series.rvt”. Select and copy (**Ctrl-C**) the schedule from the sheet view and past it (**Ctrl-V**) into a sheet in your project. The schedule filters are set to look for only those units designated with manufacturer as “Optical Cable Corporation.” The schedule contains special functionality for displaying the order numbers of the different selected types.