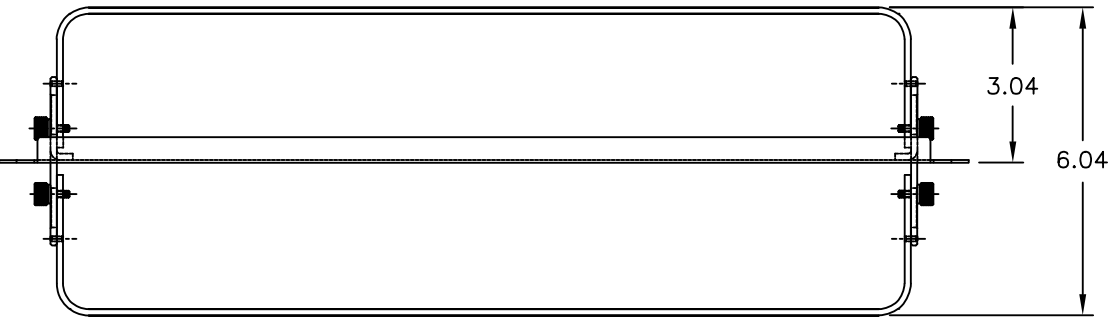
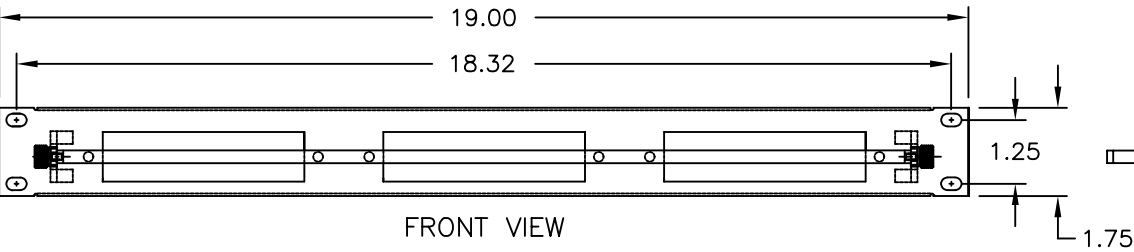


FIBEROPTICX CROSS-CONNECT CABINETS

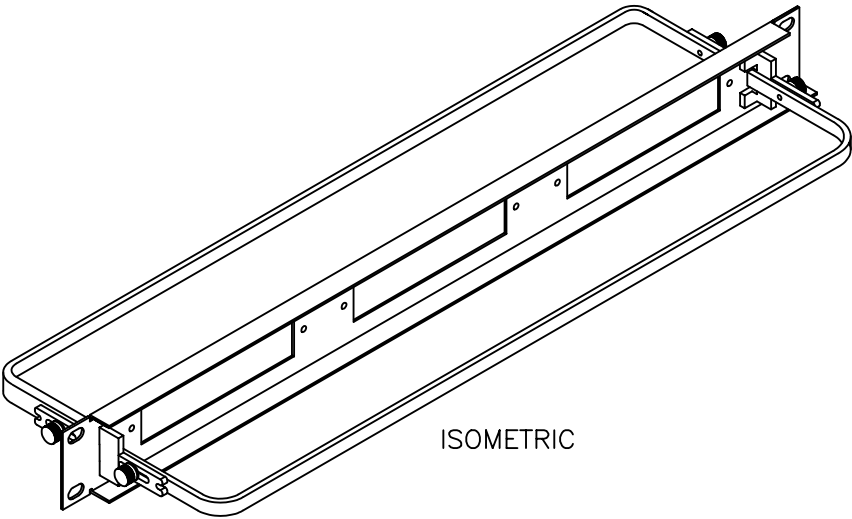
RACK MOUNT FIBER OPTIC CABINETS



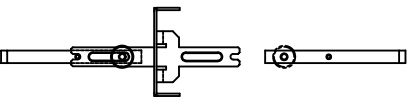
TOP VIEW



FRONT VIEW



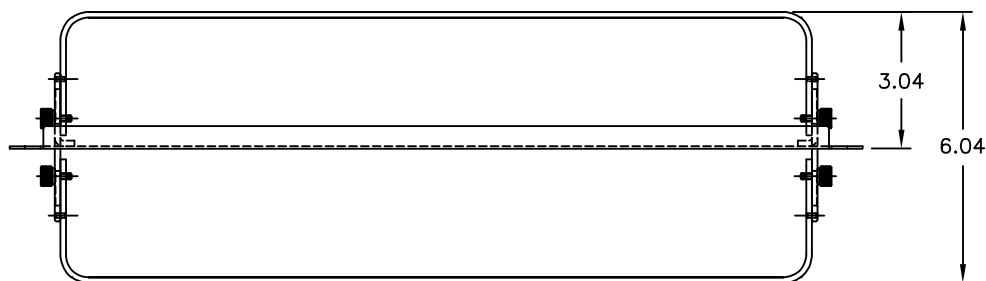
ISOMETRIC



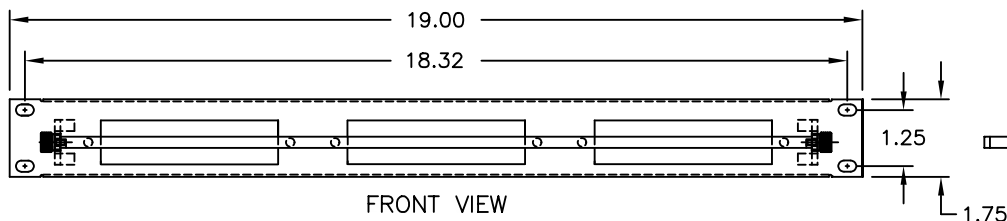
RIGHT SIDE

FIBEROPTICX CROSS-CONNECT CABINETS

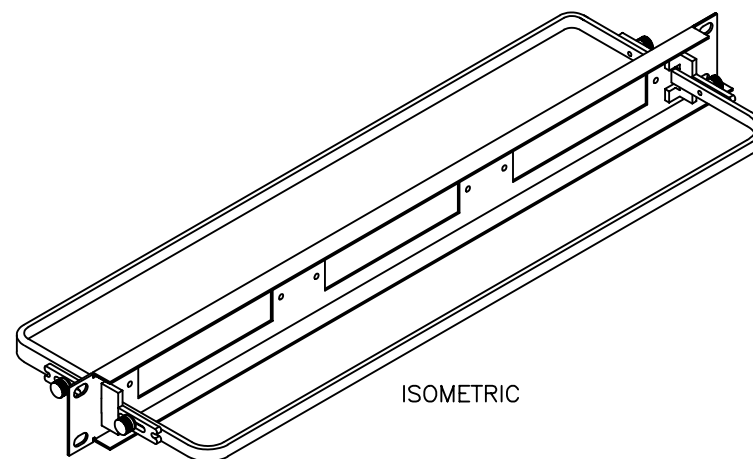
RACK MOUNT FIBER OPTIC CABINETS



TOP VIEW



FRONT VIEW



ISOMETRIC



RIGHT SIDE

SPECIFICATIONS

FEATURES & BENEFITS:

- OPTICAL CABLE CORPORATION, FIBEROPTICX (BHP SERIES) FIBER OPTIC MOUNTING CROSS CONNECT PATCH PANELS PROVIDE FIBER MANAGEMENT, CONNECTIVITY AND DISTRIBUTION FOR 6 TO 36 FIBERS. ACCOMMODATES ALL CROSS CONNECT FUNCTIONS (SPlicing, TERMINATION, & INTERCONNECTION) FOR OUTSIDE PLANT, BACKBONE, AND BUILDING CABLES.
- ACCOMMODATES SNAP-IN ADAPTER PLATES. BHP PANEL PORT COUNT IS BASED ON 6 PORT ADAPTER PLATES FOR TERMINATE AND CABLE MANAGEMENT. (EXAMPLE: BHP3 ACCOMMODATES THREE 6 PORT ADAPTER PLATES). WELL SUITED TO MULTIMEDIA/MULTI-APPLICATION CABLING ENVIRONMENTS. NOTE: ADAPTER PLATES ORDERED SEPARATELY.
- PANEL IS RUGGED 16-GAUGE STEEL CONSTRUCTION WITH A DURABLE POWDER COAT FINISH, COLOR BLACK.
- STRAIN AND BEND PROTECTION BARS OFFER ENHANCED CABLE MANAGEMENT. TIE-WRAPPS PROVIDED TO CONTROL CABLING ALONG BAR. NOTE: BAR IS REMOVABLE FOR INSTALLATION CONVENIENCE.
- STANDARD PATCH PANEL MOUNTING TO FIT 19" AND 23" RACKS MOUNTING HARDWARE INCLUDED WITH BHP PANELS.
- ALL PLASTIC COMPONENTS ARE HIGH IMPACT SELF-EXTINGUISHING, UL LISTED RATING 94V-0.

| REVISIONS | | | | | |
|-----------|-----|-------------|--|---------|-----|
| REV | SHT | DESCRIPTION | | DATE | ECN |
| A | ALL | RELEASE NEW | | 8/15/01 | NEW |
| | | | | | RBS |

| | | | | | | | | | | | |
|---|--|---|--|--|--|--|--|--|--|--------------|--|
| | | BHP3 | | PATCH PANEL ASSY, 18 PORT, F.O. MOUNTING | | | | | | | |
| | | OCC PART NO. | | DESCRIPTION | | | | | | | |
| | | UNCONTROLLED COPY | | | |  <div>5290 Concourse Drive Roanoke, VA 24019 Phone: 800-622-7711 Fax: 540-265-0724 www.occfiber.com</div> | | | | | |
| <div>DIMENSIONS ARE IN INCHES. TOLERANCES: ±1/32" ANGLES ±1/2" 3 PLACE DECIMALS ±.005" 2 PLACE DECIMALS ±.01"</div> | | <div>THIS DRAWING AND THE DESIGN SHOWN ARE THE PROPERTY OF OPTICAL CABLE CORPORATION AND MAY NOT BE USED AS THE BASIS FOR MANU- FACTURE OR SALE WITHOUT SPECIFIC WRITTEN PERMISSION OF OPTICAL CABLE CORPORATION.</div> | | | | | | | | | |
| | | | | | | | | | | | |
| | | | | | | | | | | | |
| THIRD ANGLE PROJECTION  | | MATERIAL PANEL: CRS 16 GAGE RAIL: .125 X .250 BAR | | DRAWN BY D.A.HOLBERT | | DATE 8/15/01 | | DWG TITLE RACK MOUNT CABINETS, PATCH PANEL ASSEMBLY, BHP3 | | | |
| | | | | CHECKED BY R.B.SMITH | | DATE 11/30/01 | | | | | |
| | | | | ENGINEER J.YANIK | | DATE 8/15/01 | | | | | |
| | | | | APPROVED S.VAUGHN | | DATE 11/30/01 | | | | | |
| CRITICAL DIMENSION CODE P = FUNCTION M = MATING A = AUDIT | | FINISH PAINTED BLACK (756) BAKED VINYL ORGANOSOL PER SPEC WL-2338 | | PREVIOUS DWG | | SIZE B | | DWG NO. C100673 | | REV A | |
| | | | | NEXT DWG | | FILENAME C100673A.DWG | | SCALE NONE | | SHEET 1 OF 1 | |

| | |
|-------------------------|--|
| THIRD ANGLE PROJECTION | |
| CRITICAL DIMENSION CODE | |
| (F) = FUNCTION | |
| (M) = MATING | |
| (A) = AUDIT | |

| | |
|-----------------------|--|
| MATERIAL | |
| PANEL: CRS 16 GAGE | |
| RAIL: .125 X .250 BAR | |
| FINISH | |
| PAINTED BLACK (756) | |
| BAKED VINYL ORGANOSOL | |
| PER SPEC WL-2338 | |

| | | | |
|--------------|-----------|------|----------|
| CHECKED BY | R.B.SMITH | DATE | 11/30/01 |
| ENGINEER | J.YANIK | DATE | 8/15/01 |
| APPROVED | S.VAUGHN | DATE | 11/30/01 |
| PREVIOUS DWG | | | |
| NEXT DWG | | | |

| | | | | | |
|-------|------|---------|---------|-----|---|
| SIZE | B | DWG NO. | C100673 | REV | A |
| SCALE | NONE | SHEET | 1 OF 1 | | |