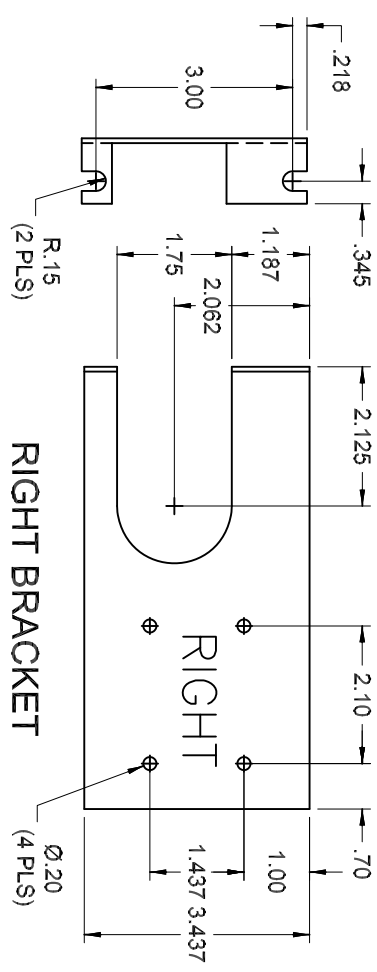
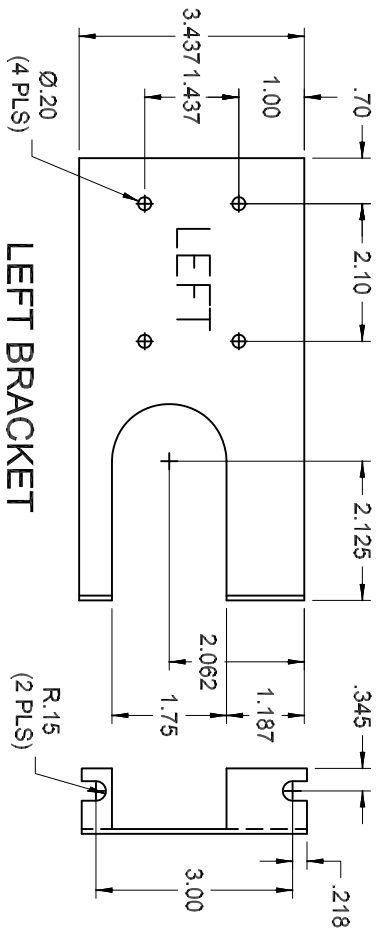
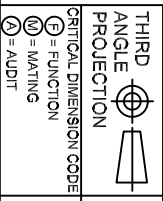


REVISION HISTORY			
REV/SHT	DESCRIPTION	DATE	EN/CHECKED
A / ALL	RELEASE NEW	3/11/98	NEW / RBS



NOTES: UNLESS OTHERWISE SPECIFIED,
 1. PART NUMBER COMES WITH 1 SET EACH OF LEFT & RIGHT BRACKETS.



BKTR1836B	BRACKET, FLUSH MOUNT, RTC18/36, 19", BLACK
BKTR1836A	BRACKET, FLUSH MOUNT, RTC18/36, 19", ALMOND
OCC PART NO.	DESCRIPTION
<p>UNLESS OTHERWISE SPECIFIED DIMENSIONS ARE IN INCHES. TOLERANCES: FRACTIONS ±.03" ANGLES ±.1° 2 PLACE DECIMALS ±.005" 3 PLACE DECIMALS ±.01"</p> <p>THIS DRAWING AND THE DESIGN SHOWN ARE THE PROPERTY OF OPTICAL CABLE CORPORATION AND MAY NOT BE USED AS THE BASIS FOR MANUFACTURE OR SALE WITHOUT SPECIFIC WRITTEN PERMISSION OF OPTICAL CABLE CORPORATION.</p> <p>DRAWN: E:WETTL DATE: 3/11/96 CHECKED: R.B.SMITH DATE: 3/11/96 ENGINEER: R.B.SMITH DATE: 3/11/96 APPROVED: J.HOWE DATE: 3/11/96</p>	
MATERIAL: 14 GA CRS (.074 THK REFERENCE)	DWG TITLE: BRACKET, FLUSH MOUNT, RTC18/36, 19" MOUNTING
FINISH: POWDER COAT. BLACK PER SMP SPEC# 100025	SIZE: B
PREVIOUS DWG: NEXT DWG:	DWG NO.: C101487
FILENAME: C101487ADFT	SCALE: NONE
	SHEET: 1 OF 1

5290 Concourse Drive
 Roanoke, VA 24019
 Phone: 800-622-7711
 Fax: 540-285-0724
 www.occliber.com

UNCONTROLLED COPY