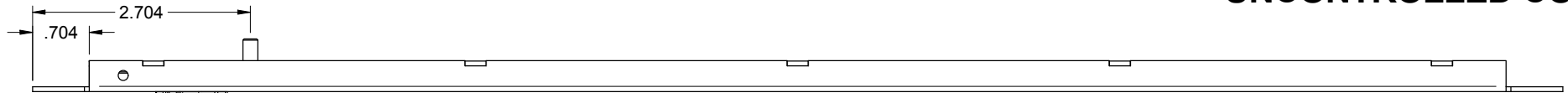
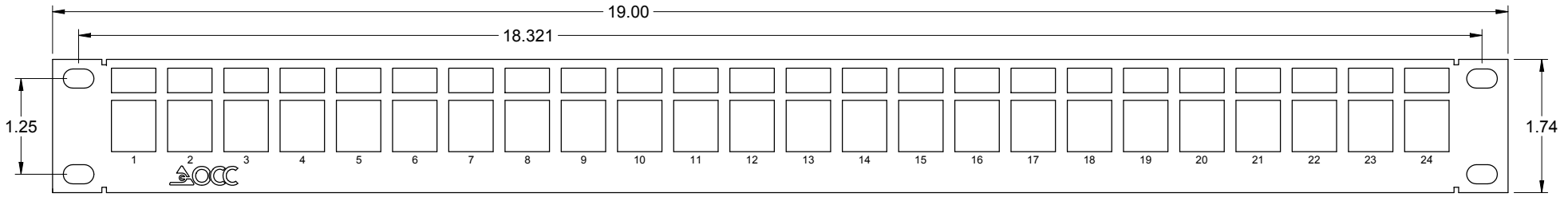


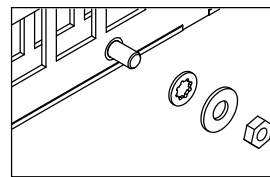
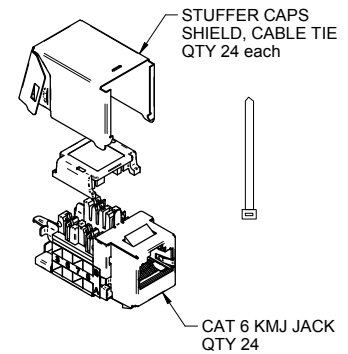
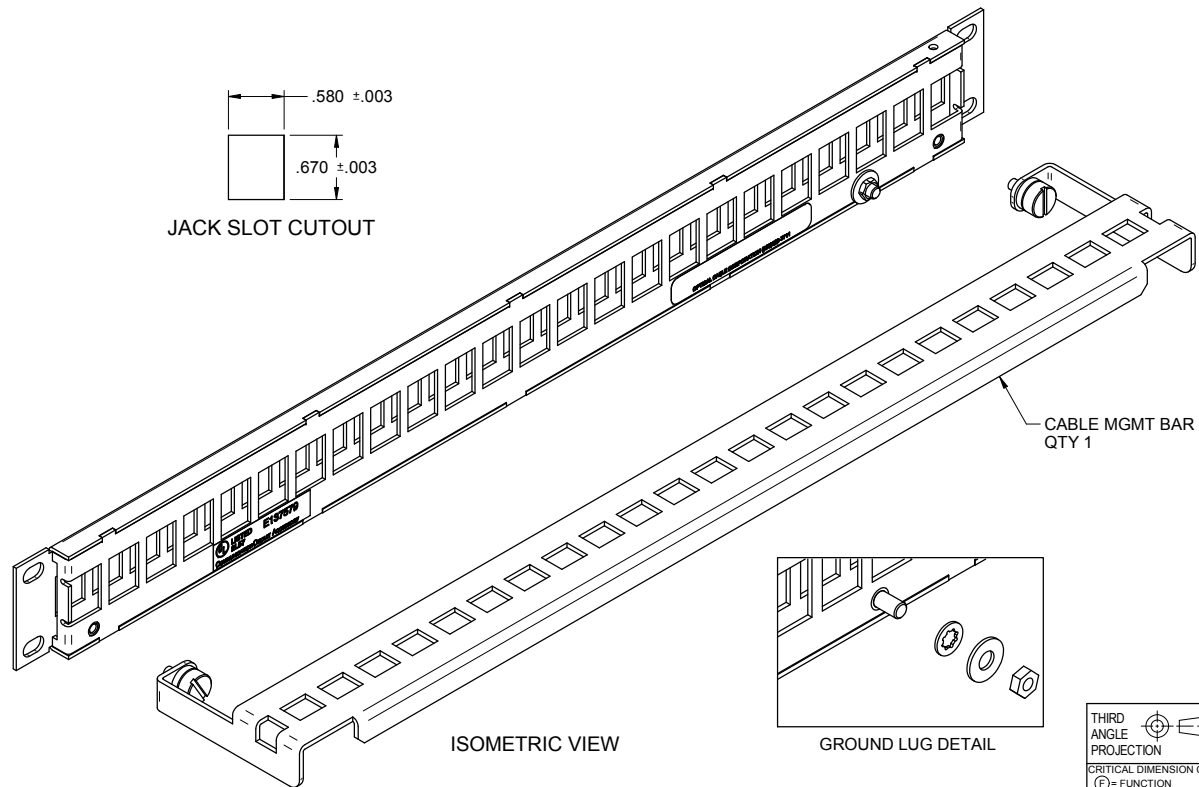
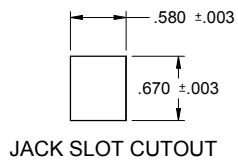
"OPTICAL CABLE CORPORATION (OCC)
RESERVES THE RIGHT TO REVISE ANY
AND ALL DESIGN SPECIFICATIONS."
UNCONTROLLED COPY



TOP VIEW




FRONT VIEW



THIRD ANGLE PROJECTION

CRITICAL DIMENSION CODE
 (F) = FUNCTION
 (M) = MATING
 (A) = AUDIT

DCC2488/110SIX-S		PATCH PANEL, 24 PORT, KMJ, SHIELDED, CAT6	
OCC PART NO.		DESCRIPTION	
UNCONTROLLED COPY			
UNLESS OTHERWISE SPECIFIED DIMENSIONS ARE IN INCHES. TOLERANCES: FRACTIONS ±1/32 ANGLES ±1/2° 3 PLACE DECIMALS ±.005" 2 PLACE DECIMALS ±.01"		THIS DRAWING AND THE DESIGN SHOWN ARE THE PROPERTY OF OPTICAL CABLE CORPORATION AND MAY NOT BE USED AS THE BASIS FOR MANUFACTURE OR SALE WITHOUT SPECIFIC WRITTEN PERMISSION OF OPTICAL CABLE CORPORATION.	
MATERIAL PANEL: CRS, 16 GAGE (.0598 THK REF)	DRAWN D.A.HOLBERT	DATE 7/11/02	 5290 Concourse Drive Roanoke, VA 24019 Phone: 800-622-7711 Fax: 540-265-0724 www.occfiber.com
FINISH PAINT: POWDERCOAT BLACK PER OCC SPEC# 100025	CHECKED J.HOWE	DATE 10/1/10	
	ENGINEER J.YANIK	DATE 7/11/02	
	APPROVED J.CALLOWAY	DATE 7/15/16	
PREVIOUS DWG	FILENAME C105390D.dft	SCALE NONE	DWG TITLE CUSTOMER DRAWING, PATCH PANEL ASSEMBLY, 24 PORT, KMJ, SHIELDED, CAT6
SIZE C	DWG NO. C105390	REV D	SHEET 1 OF 1