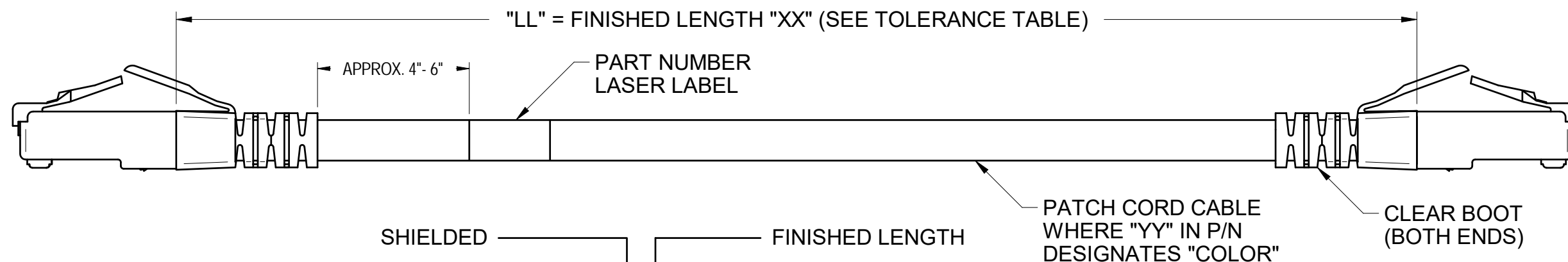


"OPTICAL CABLE CORPORATION (OCC)
RESERVES THE RIGHT TO REVISE ANY
AND ALL DESIGN SPECIFICATIONS."

UNCONTROLLED COPY



SHIELDED
CATEGORY
PRODUCT CODE

FINISHED LENGTH
BOOT
SEE COLOR TABLE

PCSIXSLLBYY
(OCC PART NUMBER)

CORD CONSTRUCTION:

CABLE OD: .235" (NOM.), .242" (MAX.)

PAIRS: COLOR CODED SINGLES TWISTED INTO PAIRS

CONDUCTOR: 26 AWG 7/34 STRANDED TINNED COPPER .019" NOM OD

INSULATION: POLYOLEFIN .009" NOM. WALL THICKNESS, .036" NOMINAL DIAMETER

JACKET: POLYVINYLCHLORIDE, .024" NOM. WALL THICKNESS, CMR

SHIELD: AN ALUMINIZED POLYESTER FOIL SHIELD (FOIL IN, 100% COVERAGE)

WITH A 26 AWG 7/34 STRANDED TINNED COPPER DRAIN WIRE IN CONTACT WITH METALIZED SURFACE SHALL BE APPLIED OVER THE CABLE CORE.

MODULAR PLUGS:

HOUSING: POLYCARBONATE UL 94V-0

CONTACTS: 50µIN GOLD PLATED

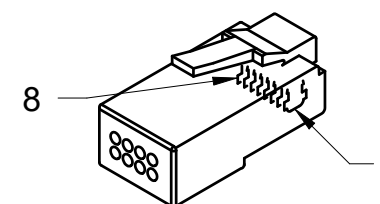
CONFORMS WITH TIA-968-A

OPERATING TEMPERATURE RANGE: -20°C to 75°C

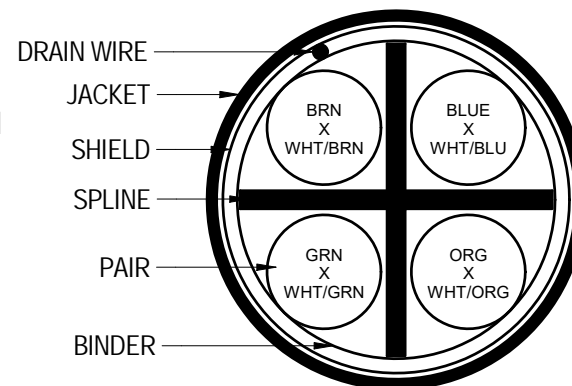
MEETS CATEGORY 6 PERFORMANCE AND MECHANICAL REQUIREMENTS FOR PATCH CORDS AS DEFINED BY ANSI/TIA 568.2

APPLICATIONS:

- 2.5/5GBASE-T
- 10/100/1000BASE-T
- SUPPORTS ALL IEEE STANDARDS FOR DC POWER DELIVERY OVER 4-PAIR CABLING WHEN INSTALLED IN ACCORDANCE WITH TIA TELECOMMUNICATION SYSTEMS BULLETIN TSB-184-A, GUIDELINES FOR SUPPORTING POWER DELIVERY OVER BALANCED OVER BALANCED TWISTED-PAIR CABLING.
- ANY APPLICATION DESIGNED TO OPERATE OVER CATEGORY 6 CABLING SYSTEMS.



FINISH LENGTH	TOLERANCE
0 - 10'	+2" / - 0"
10' 1" - 20'	+3" / - 0"
20' 1" - >'	+6" / - 0"



CABLE PROFILE

PLUG CONTACT NO.	WIRE COLOR
1	WH/OR
2	OR/WH
3	WH/GN
4	BL/WH
5	WH/BL
6	GN/WH
7	WH/BN
8	BN/WH

COLOR CODE (NUMERIC)

- 01 = YELLOW
- 02 = BLACK
- 03 = RED
- 04 = GREEN
- 05 = BLUE
- 06 = GRAY
- 07 = WHITE
- 08 = ORANGE
- 09 = BROWN
- 10 = PURPLE

UNLESS OTHERWISE SPECIFIED DIMENSIONS ARE IN INCHES
TOLERANCES:
FRACTIONS ±1/32"
ANGLES ±1/2°
3 PLACE DECIMALS ±.005"
2 PLACE DECIMALS ±.01"

THIS DRAWING AND THE DESIGN SHOWN ARE THE PROPERTY OF OPTICAL CABLE CORPORATION AND MAY NOT BE USED AS THE BASIS FOR MANUFACTURE OR SALE WITHOUT SPECIFIC WRITTEN PERMISSION OF OPTICAL CABLE CORPORATION.



33 Superior Way
Swannanoa, NC 28778
Phone: 828-298-2260
Fax: 828-298-2487
www.occfiber.com

THIRD ANGLE PROJECTION

CRITICAL DIMENSION CODE
Ⓟ = FUNCTION
Ⓜ = MATING
Ⓐ = AUDIT

MATERIAL
SEE BILL OF MATERIAL

FINISH
SEE NOTES

DRAWN	D.A.HOLBERT	DATE	8/11/05
CHECKED	R.B.SMITH	DATE	4/10/06
ENGINEER	J.YANIK	DATE	8/11/05
APPROVED	J.HOWE	DATE	2/20/09
PREVIOUS DWG			
NEXT DWG		FILENAME	C107430D.dft

DWG TITLE			SHIELDED PATCH CORD, OCC, T568B, CATEGORY 6, W/ BOOT		
SIZE	DWG NO.	REV			
B	C107430	D			
SCALE:	NONE	SHEET	1 OF 1		