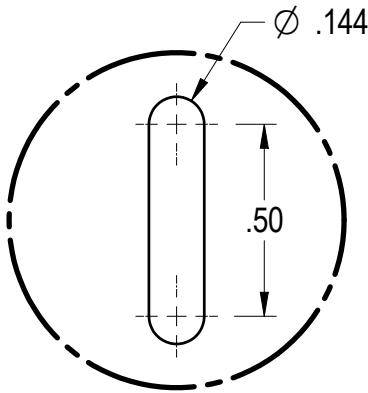
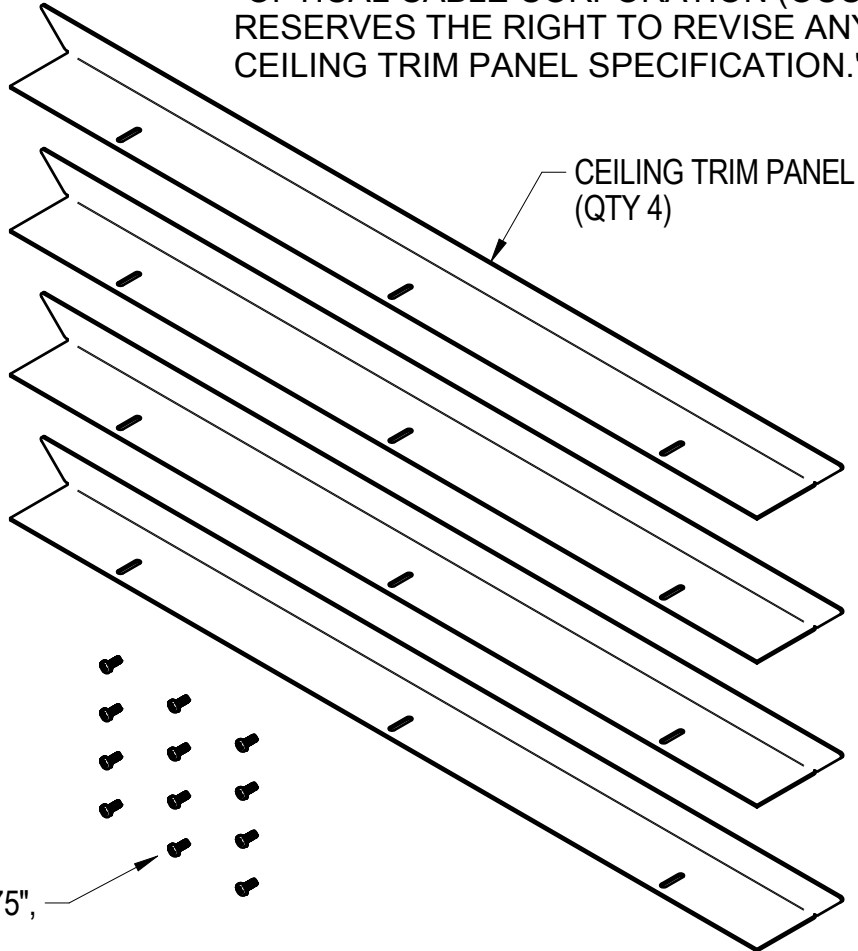


REVISION HISTORY					
REV	SHT	DESCRIPTION	DATE	ECN	CHECKED
A	ALL	RELEASE NEW	7/29/14	NEW	JY

CRITICAL DIMENSION CODE
 (F) = FUNCTION
 (M) = MATING
 (A) = AUDIT

UNCONTROLLED COPY
 "OPTICAL CABLE CORPORATION (OCC)
 RESERVES THE RIGHT TO REVISE ANY
 CEILING TRIM PANEL SPECIFICATION."

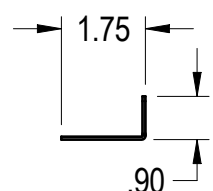
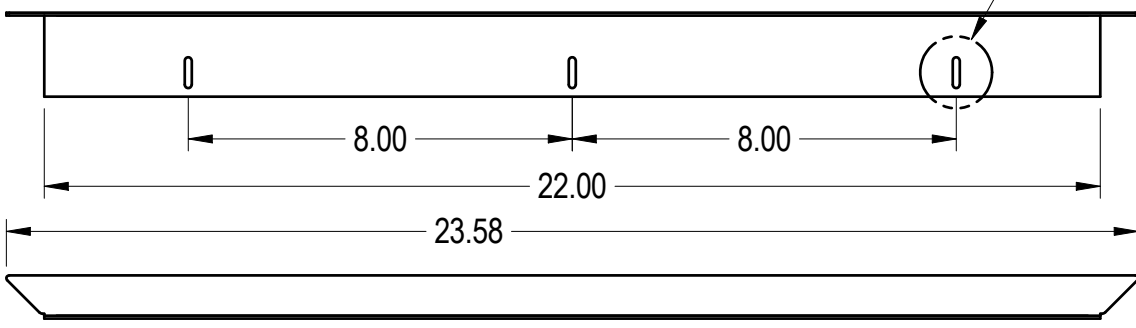
- NOTES: UNLESS OTHERWISE SPECIFIED.
1. DIMENSIONS SYMMETRIC ABOUT ASSOCIATED VIEW CENTERLINE $\pm .003$
 INSIDE RADIUS OF BEND $.015 \pm .005$
 ALL BENDS ARE 90 DEGREES.
 2. PRODUCT HAS APPROVAL TO CERTIFICATION OF COMPLIANCE TO E.U. RoHS DIRECTIVE 2002/95/EC
 3. DIMENSIONS APPLY POST COATING.



DETAIL "A"

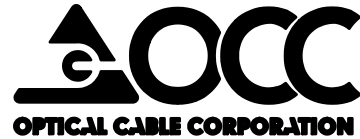
SCREW, #6-32 X .375",
 PH, PHILLIPS
 (QTY 12)

SEE DETAIL "A"



UNLESS OTHERWISE SPECIFIED
 DIMENSIONS ARE IN INCHES.
 TOLERANCES: FRACTIONS $\pm 1/32"$
 ANGLES $\pm 1/2^\circ$
 3 PLACE DECIMALS $\pm .005"$
 2 PLACE DECIMALS $\pm .01"$

THIS DRAWING AND THE DESIGN SHOWN ARE THE
 PROPERTY OF OPTICAL CABLE CORPORATION AND
 MAY NOT BE USED AS THE BASIS FOR MANUFACTURE
 OR SALE WITHOUT SPECIFIC WRITTEN PERMISSION
 OF OPTICAL CABLE CORPORATION.



33 Superior Way
 Swannanoa, NC 28778
 Phone: 828-298-2260
 Fax: 828-298-2487
 www.occfiber.com

MATERIAL
 CRS, 16 GA.
 .060" THK.

DRAWN	D.A.HOLBERT	DATE	7/29/14
CHECKED	J.YANIK	DATE	10/8/14
ENGINEER	N.UHLAND	DATE	7/29/14
APPROVED	J.HOWE	DATE	11/13/14

DWG TITLE
**CUSTOMER DRAWING,
 ZONE DIST KIT, ZETRIMKIT**

FINISH
 POWDERCOAT WHITE
 PER OCC SPEC 10002510

PREVIOUS DWG	
NEXT DWG	FILENAME C111957A.DFT

SIZE A	DWG NO. C111957	REV A
SCALE: 1:4	SHEET 1 OF 1	