

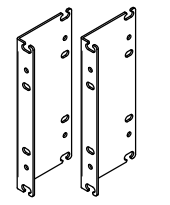
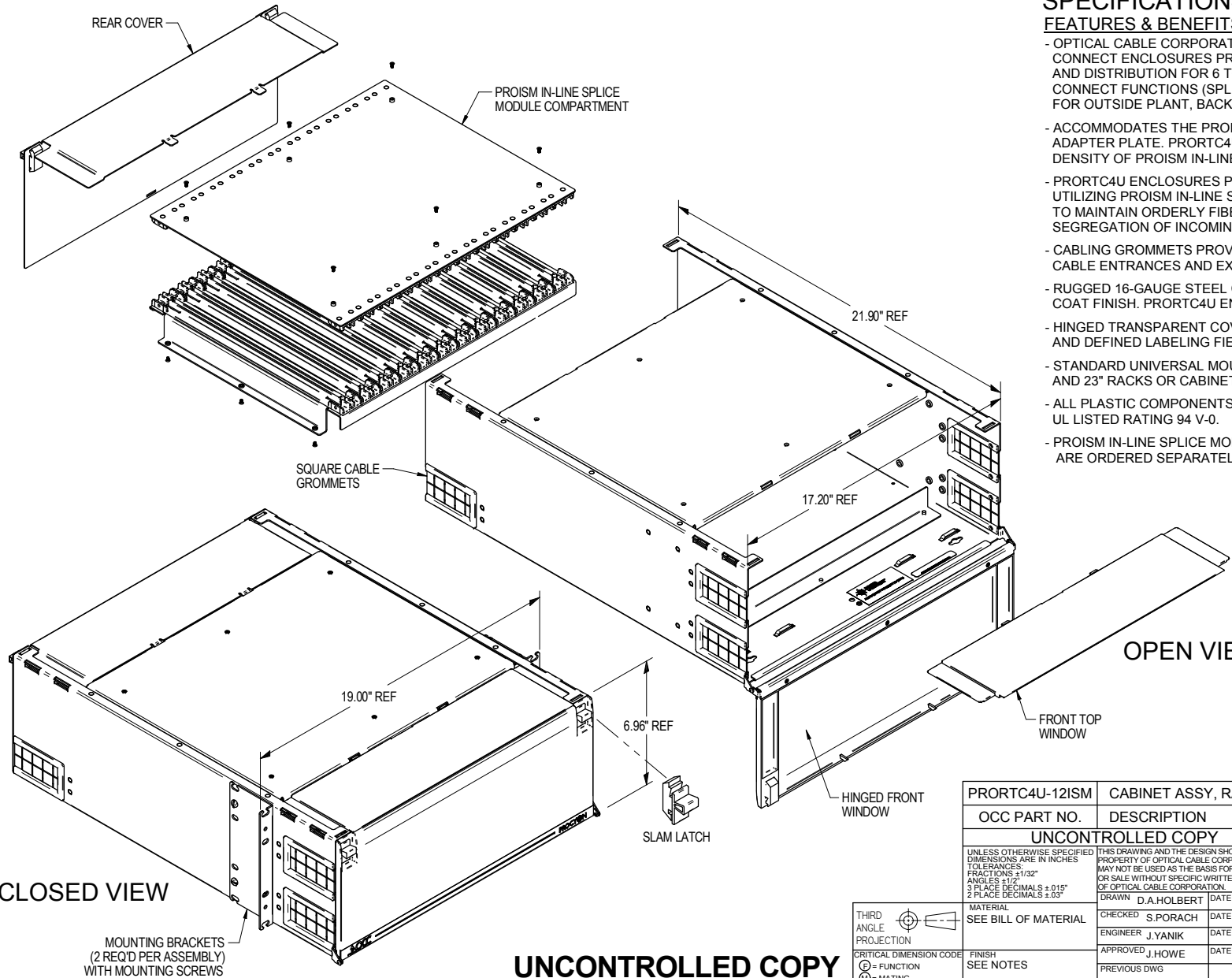
REVISION HISTORY		DATE	ECN	CHECKED
REV/SHT	DESCRIPTION			
A	ALL RELEASE NEW	9/30/14	NEW	JY

"OPTICAL CABLE CORPORATION (OCC)
RESERVES THE RIGHT TO REVISE ANY
RACK CABINET SPECIFICATIONS."

SPECIFICATIONS

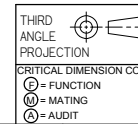
FEATURES & BENEFITS:

- OPTICAL CABLE CORPORATION'S, PRORTC4U SERIES FIBER OPTIC CROSS CONNECT ENCLOSURES PROVIDE FIBER MANAGEMENT CONNECTIVITY, AND DISTRIBUTION FOR 6 TO 288 FIBERS. ACCOMMODATES ALL CROSS CONNECT FUNCTIONS (SPLICING, TERMINATION, AND INTERCONNECTION) FOR OUTSIDE PLANT, BACKBONE, AND BUILDING CABLES.
- ACCOMMODATES THE PROISM IN-LINE SPLICE MODULE WITH HD SNAP-IN ADAPTER PLATE. PRORTC4U ENCLOSURE PORT COUNT BASED UPON PORT DENSITY OF PROISM IN-LINE SPLICE MODULE (ORDERED SEPARATELY).
- PRORTC4U ENCLOSURES PROVIDE INNOVATIVE FIBER ORGANIZATION UTILIZING PROISM IN-LINE SPLICE MODULE COMPARTMENT DESIGNED TO MAINTAIN ORDERLY FIBER MANAGEMENT AND ALLOW FOR GREATER SEGREGATION OF INCOMING FIBER CABLES.
- CABLING GROMMETS PROVIDE RELIABLE CABLE PROTECTION AT ALL CABLE ENTRANCES AND EXITS.
- RUGGED 16-GAUGE STEEL CONSTRUCTION WITH A DURABLE POWDER COAT FINISH. PRORTC4U ENCLOSURE COLOR: BLACK
- HINGED TRANSPARENT COVER ALLOWS FOR VISUAL PORT INSPECTION AND DEFINED LABELING FIELD PROVIDED FOR TIA 606A COMPLIANCE.
- STANDARD UNIVERSAL MOUNTING BRACKETS INCLUDED TO FIT 19" AND 23" RACKS OR CABINETS FOR THE PRORTC4U ENCLOSURE.
- ALL PLASTIC COMPONENTS ARE HIGH-IMPACT SELF-EXTINGUISHING, UL LISTED RATING 94 V-0.
- PROISM IN-LINE SPLICE MODULE & EXTERNAL STRAIN RELIEF BRACKETS ARE ORDERED SEPARATELY AS AN OPTION FOR PRORTC4U ENCLOSURE.



MOUNTING BRACKETS

PRORTC4U-12ISM	CABINET ASSY, RACK MOUNT, 4U, BLACK, PROCYON								
OCC PART NO.	DESCRIPTION								
UNCONTROLLED COPY									
<small>UNLESS OTHERWISE SPECIFIED DIMENSIONS ARE IN INCHES TOLERANCES: FRACTIONS ±1/32" ANGLES ±1/2° 3 PLACE DECIMALS ±.015" 2 PLACE DECIMALS ±.03"</small>									
<small>THIS DRAWING AND THE DESIGN SHOWN ARE THE PROPERTY OF OPTICAL CABLE CORPORATION AND MAY NOT BE USED AS THE BASIS FOR MANUFACTURE OR SALE WITHOUT SPECIFIC WRITTEN PERMISSION OF OPTICAL CABLE CORPORATION.</small>									
DRAWN D.A.HOLBERT	DATE 9/30/14								
CHECKED S.PORACH	DATE 1/7/15								
ENGINEER J.YANIK	DATE 9/30/14								
APPROVED J.HOWE	DATE 1/7/15								
PREVIOUS DWG									
NEXT DWG									
<table border="1"> <tr> <td>FILENAME</td> <td>C112030A.dft</td> </tr> <tr> <td>SCALE</td> <td>NONE</td> </tr> <tr> <td>SHEET</td> <td>1 OF 1</td> </tr> </table>		FILENAME	C112030A.dft	SCALE	NONE	SHEET	1 OF 1		
FILENAME	C112030A.dft								
SCALE	NONE								
SHEET	1 OF 1								
<table border="1"> <tr> <td>DWG TITLE</td> <td>CUSTOMER DRAWING, CABINET ASSEMBLY, RACK MOUNT, 4U, PROCYON</td> </tr> <tr> <td>SIZE</td> <td>C</td> </tr> <tr> <td>DWG NO.</td> <td>C112030</td> </tr> <tr> <td>REV</td> <td>A</td> </tr> </table>		DWG TITLE	CUSTOMER DRAWING, CABINET ASSEMBLY, RACK MOUNT, 4U, PROCYON	SIZE	C	DWG NO.	C112030	REV	A
DWG TITLE	CUSTOMER DRAWING, CABINET ASSEMBLY, RACK MOUNT, 4U, PROCYON								
SIZE	C								
DWG NO.	C112030								
REV	A								
<small>33 Superior Way Swannanoa, NC 28778 Phone: 828-298-2260 Fax: 828-298-2487 www.occfiber.com</small>									



UNCONTROLLED COPY

CLOSED VIEW

OPEN VIEW

MOUNTING BRACKETS
(2 REQ'D PER ASSEMBLY)
WITH MOUNTING SCREWS