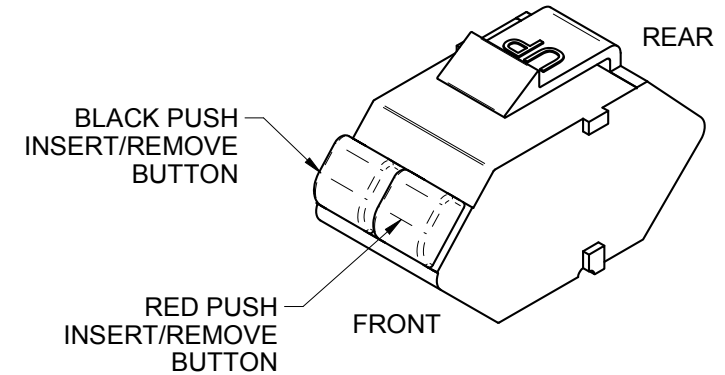
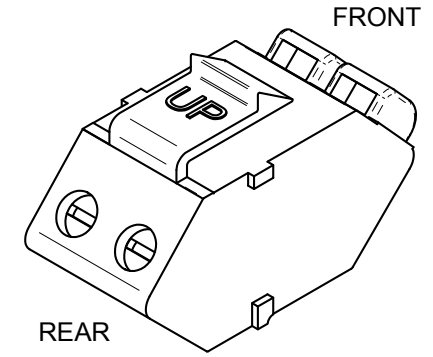
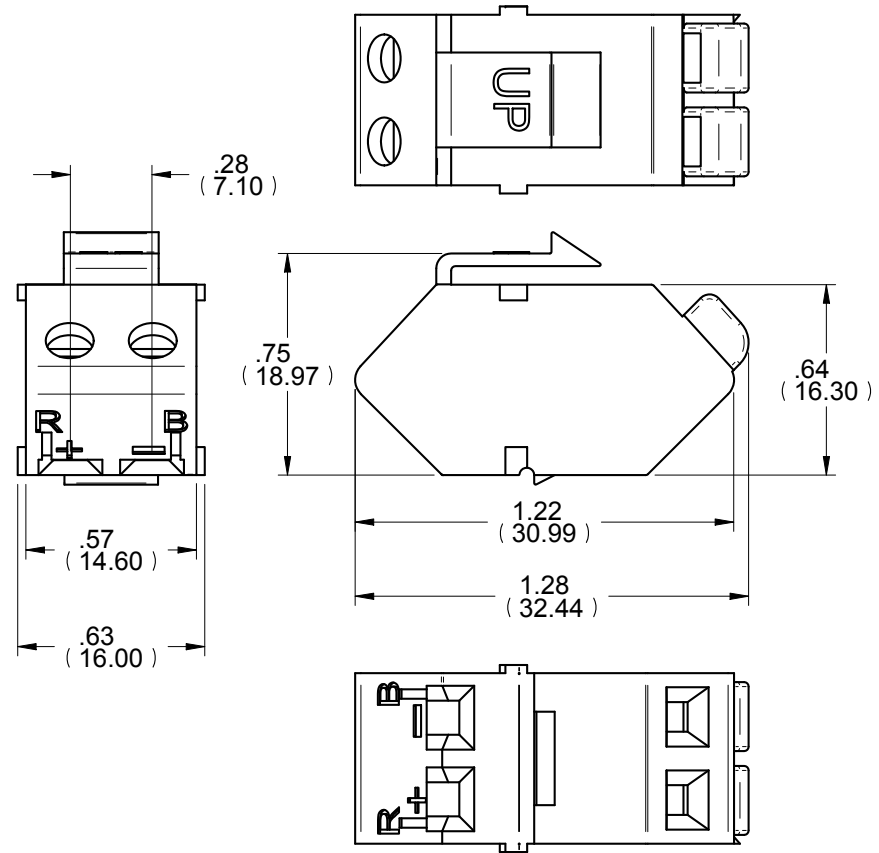
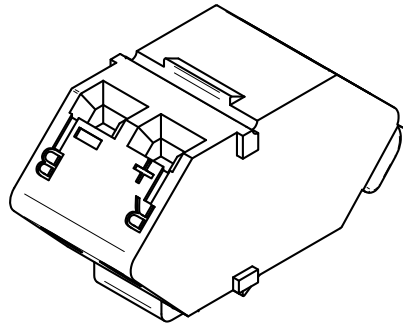
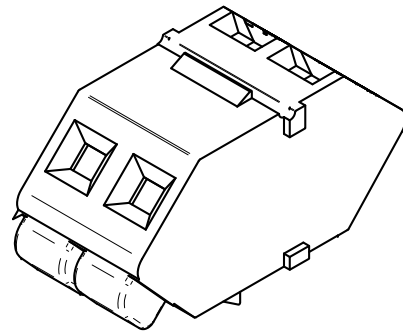


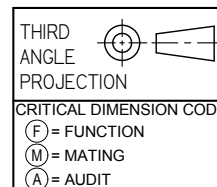
"OPTICAL CABLE CORPORATION (OCC)  
RESERVES THE RIGHT TO REVISE ANY  
AND ALL DESIGN SPECIFICATIONS."


**UNCONTROLLED COPY**



**NOTES: UNLESS OTHERWISE SPECIFIED.**

1. Rating: 300V, 15A
2. Insulation Withstand Voltage: 1500 VAC minimum
3. Insulation Resistance: 500 MΩ or more at 500VDC  
Temperature range: -10°C - +60°C  
Screw Torque: 4kg-cm  
Wire gage: 24 - 14 AWG



AKDCPT12		AXCESS ADAPTER, KMJ, POWER PASS-THRU, BRIGHT WHT	
OCC PART NO.		DESCRIPTION	
UNLESS OTHERWISE SPECIFIED DIMENSIONS ARE IN INCHES. TOLERANCES: FRACTIONS ±1/32" ANGLES ±1/2° 3 PLACE DECIMALS ±.005" 2 PLACE DECIMALS ±.01"		THIS DRAWING AND THE DESIGN SHOWN ARE THE PROPERTY OF OPTICAL CABLE CORPORATION AND MAY NOT BE USED AS THE BASIS FOR MANUFACTURE OR SALE WITHOUT SPECIFIC WRITTEN PERMISSION OF OPTICAL CABLE CORPORATION.	
MATERIAL AS PURCHASED	DRAWN D.A.HOLBERT	DATE 8/30/17	 <p>33 Superior Way Swannanoa, NC 28778 Phone: 828-298-2260 Fax: 828-298-2487 www.occfiber.com</p>
FINISH AS PURCHASED	CHECKED J.HOWE	DATE 8/31/17	
	ENGINEER J.YANIK	DATE 8/30/17	
	APPROVED J.CALLOWAY	DATE 8/31/17	DWG TITLE ADAPTER KMJ, 2-CONDUCTOR, POWER PASS-THRU, BRIGHT WHT SIZE B DWG NO. <b>C112889</b> REV A
	PREVIOUS DWG		SCALE: NONE
	NEXT DWG	FILENAME C112889A.dft	SHEET 1 OF 1