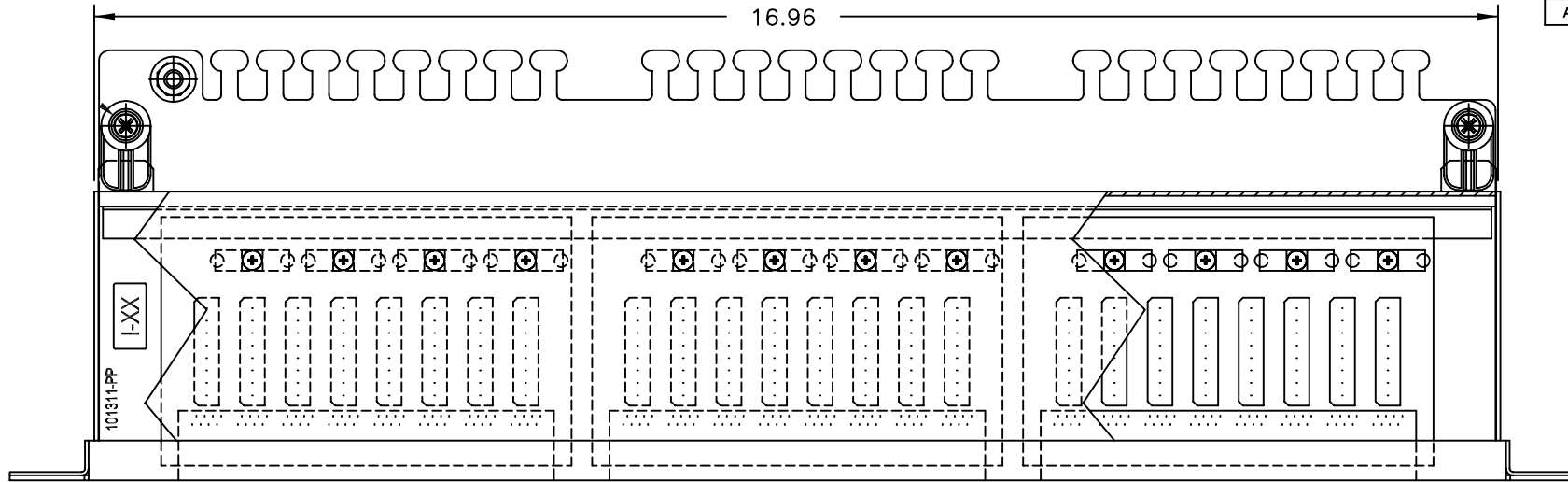
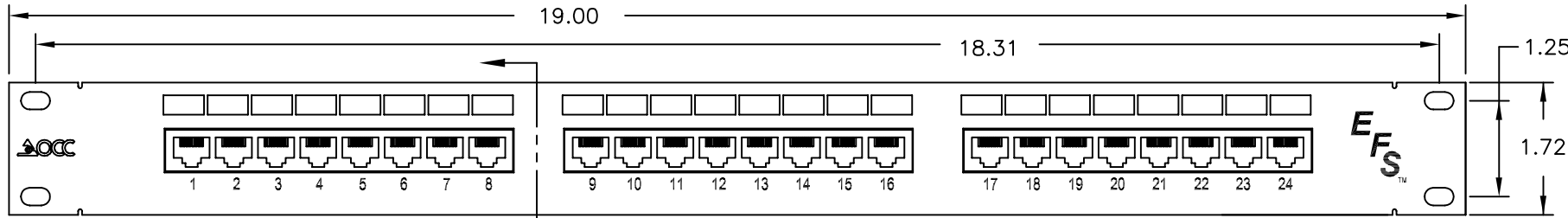


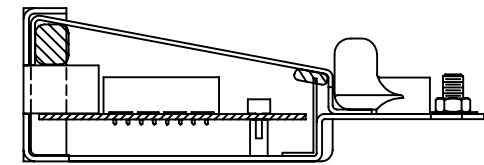
REV		SHT		DESCRIPTION	DATE	ECN	CHECKED
A	ALL	RELEASE	NEW		1/10/03	NEW	RBS



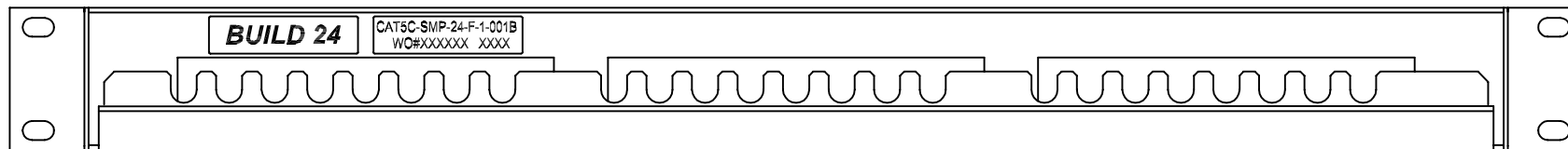
TOP VIEW



FRONT VIEW



SECTION A-A

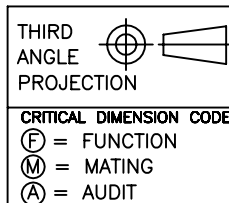


BACK VIEW

ROTATED 180° CW—MODULES NOT SHOWN

SPECIFICATIONS:

- SHIELDING FROM EXTERNAL NOISES AND WIRELESS TECHNOLOGIES.
- ALL PLASTIC COMPONENTS ARE HIGH IMPACT SELF-EXTINGUISHING RATED 94V-0.
- PC BOARD: FIBERGLAS, EPOXY, FR-4, .062 MIN THK
- UL LISTED
- CSA CERTIFIED



DCC2488/110S01		PATCH PANEL, 24P, SHLD, TRAY TYPE, 110, BLACK, B-WIRED	
OCC PART NO.		DESCRIPTION	
UNCONTROLLED COPY			
UNLESS OTHERWISE SPECIFIED DIMENSIONS ARE IN INCHES TOLERANCES: FRACTIONS ±1/32" ANGLES ±1/2" 3 PLACE DECIMALS ±.005" 2 PLACE DECIMALS ±.01"		THIS DRAWING AND THE DESIGN SHOWN ARE THE PROPERTY OF OPTICAL CABLE CORPORATION AND MAY NOT BE USED AS THE BASIS FOR MANUFACTURE OR SALE WITHOUT SPECIFIC WRITTEN PERMISSION OF OPTICAL CABLE CORPORATION.	
DRAWN BY D.A.HOLBERT		DATE 1/10/03	
CHECKED BY R.B.SMITH		DATE 1/15/03	
ENGINEER J.YANIK		DATE 1/10/03	
APPROVED H.JOHNSON		DATE 10/1/10	
PREVIOUS DWG			
NEXT DWG			
MATERIAL PANEL: CRS 18 GAGE CONN BODY: POLYCARBONATE UL RATING UL94 V-0		FINISH PANEL: PAINTED BLACK PER OCC SPEC# 100025	
DWG TITLE		PATCH PANEL ASSEMBLY, SHIELDED, TRAY TYPE, 24 PORT, 110, B-WIRED	
SIZE	DWG NO.	REV	
A	C105834	A	
FILENAME	SCALE	SHEET	
C105834A.DWG	NONE	1 OF 1	