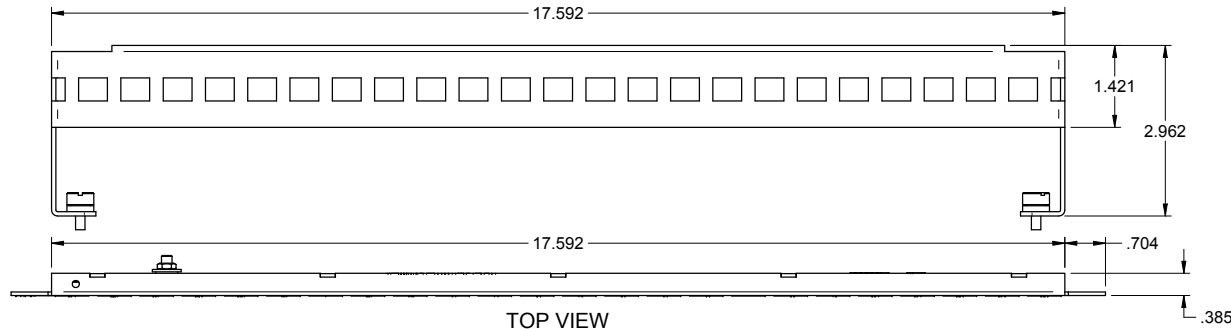
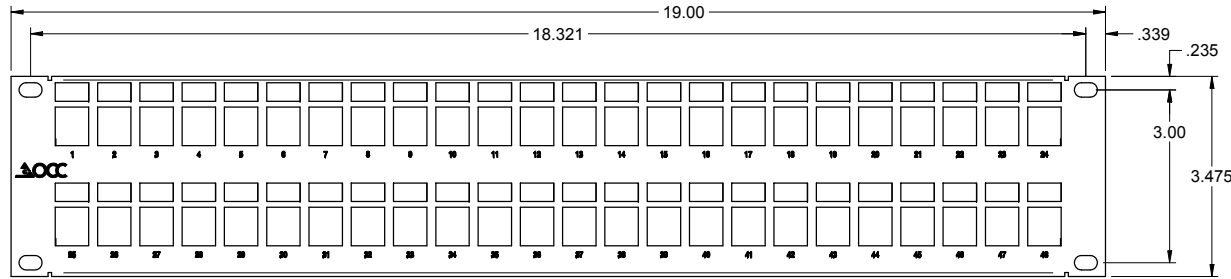


REVISION HISTORY					
REV/SHT	DESCRIPTION	DATE	ECN	CHECKED	
A	ALL RELEASE NEW	4/1/04	NEW	RBS	
B	EDITED: TITLE BLOCK	1/5/05	-	JY	
C	REDESIGNED: PATCH PANEL DESIGN	9/25/06	-	RBS	
D	UPDATED: QTY OF CABLE MGMT BAR, WAS 1	10/4/07	-	RBS	
E	ADDED: ISOMETRIC VIEW OF PATCH PANEL WITH CABLE MGMT	6/29/11	-	JH	

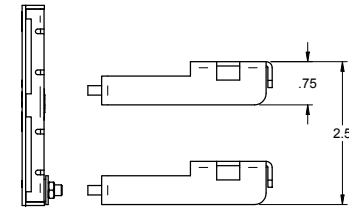
"OPTICAL CABLE CORPORATION (OCC) RESERVES THE RIGHT TO REVISE ANY PATCH PANEL SPECIFICATIONS."



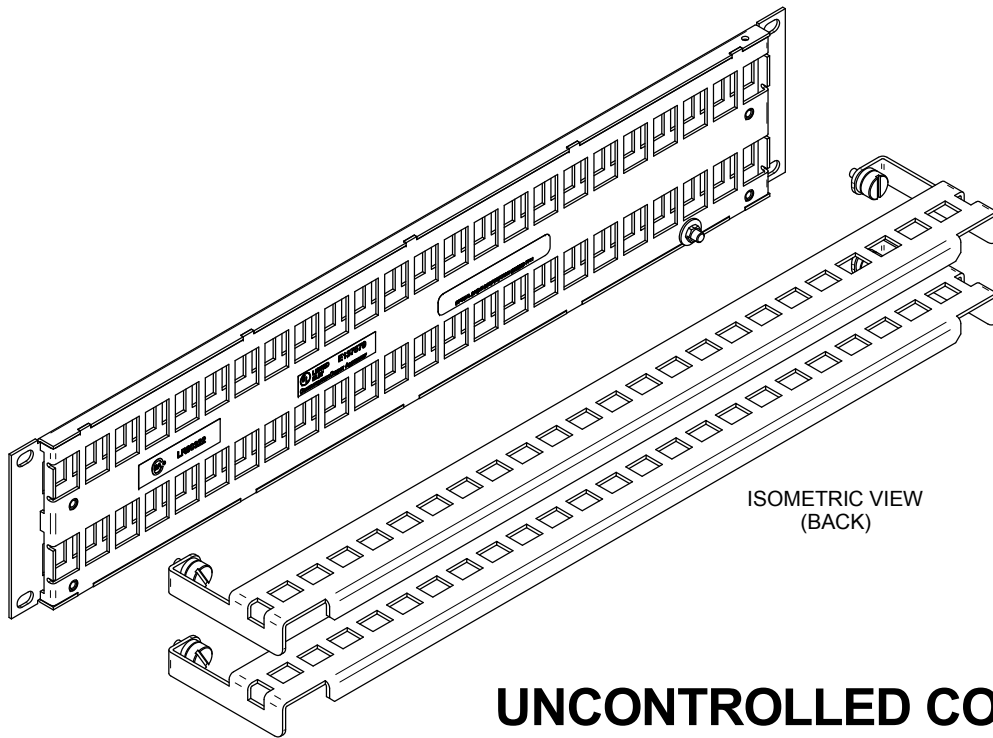
TOP VIEW



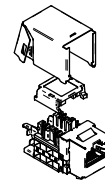
FRONT VIEW



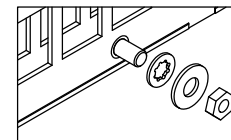
RIGHT SIDE



ISOMETRIC VIEW (BACK)

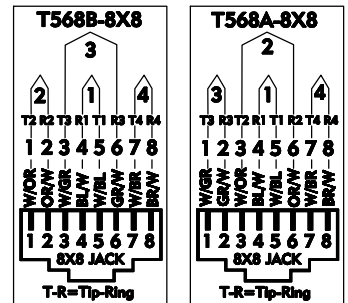


KMJ CAT6 JACKS SHIELDED (QTY 48)



GROUND LUG DETAIL

8 Position Modular Jack



DCC4888/110SIX-S	PATCH PANEL, CAT6, SHIELDED KMJ, 48 PORT, WITH JACKS
OCC PART NO.	DESCRIPTION

THIRD ANGLE PROJECTION CRITICAL DIMENSION CODE (F) = FUNCTION (M) = MATING (A) = AUDIT	UNLESS OTHERWISE SPECIFIED, DIMENSIONS ARE IN INCHES. TOLERANCES: FRACTIONS ±1/32" ANGLES ±1/2" 3 PLACE DECIMALS ±.005" 2 PLACE DECIMALS ±.01"	THIS DRAWING AND THE DESIGN SHOWN ARE THE PROPERTY OF OPTICAL CABLE CORPORATION AND MAY NOT BE USED AS THE BASIS FOR MANUFACTURE OR SALE WITHOUT SPECIFIC WRITTEN PERMISSION OF OPTICAL CABLE CORPORATION.	33 Superior Way Swannanoa, NC 28778 Phone: 828-298-2260 Fax: 828-298-2487 www.occfiber.com
	MATERIAL: SEE BILL OF MATERIAL FINISH: SEE NOTES	CHECKED: R.B.SMITH DATE: 9/26/06 ENGINEER: J.YANIK DATE: 4/1/04 APPROVED: J.HOWE DATE: 6/29/11	DRAWN: D.A.HOLBERT DATE: 4/1/04 DWG TITLE: ASSEMBLY, PANEL, 48 PORT, CAT6, KMJ SHLD, W/ JACKS
PREVIOUS DWG: NEXT DWG:	FILENAME: 106650E.dft	SCALE: NONE	SHEET: 1 OF 1

UNCONTROLLED COPY