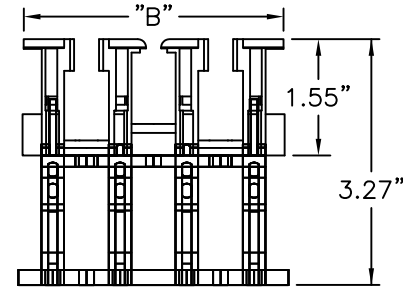
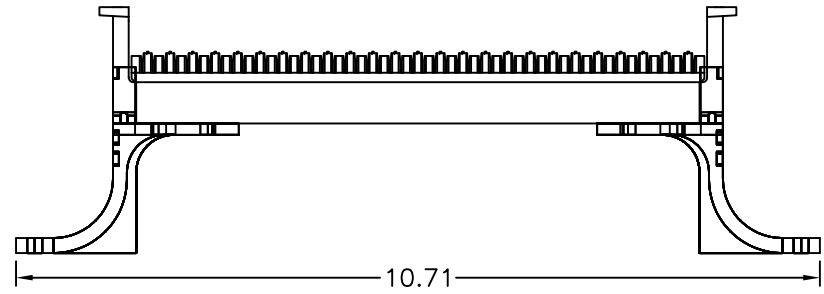
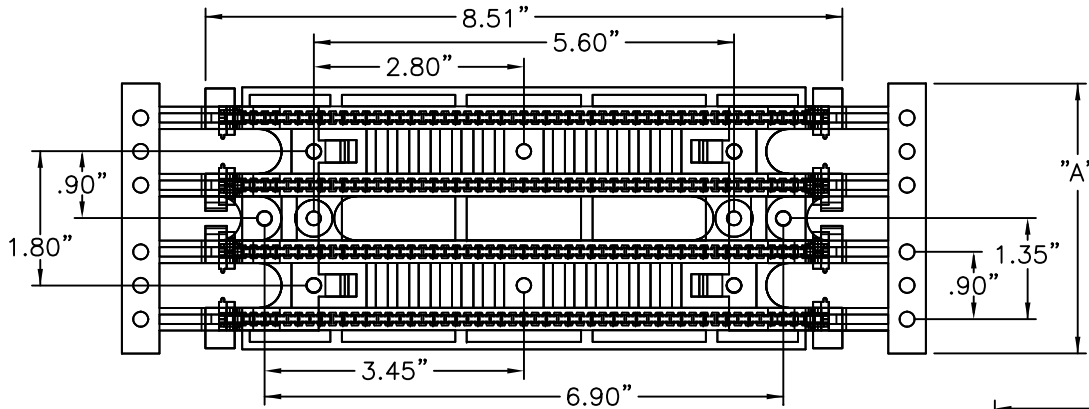
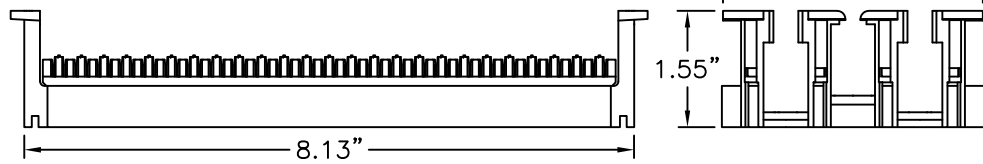
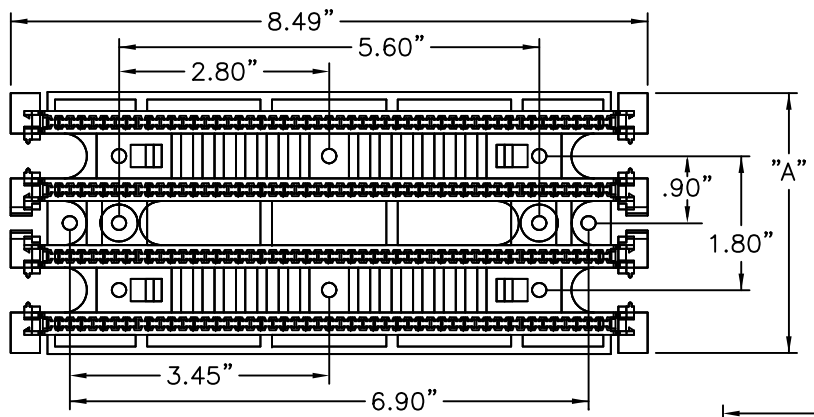


REV		SMT		DESCRIPTION		DATE	ECN	CHECKED
A	ALL	RELEASE	NEW			12/7/01	NEW	RBS
D	-	ADDED:	SPECIFICATION	NOTES FOR	MATERIAL	5/23/11	-	DI



DCC100/110EFSL SHOWN



DCC100/110EFS SHOWN

SPECIFICATIONS:
ENVIRONMENTAL CONDITIONS

TEMPERATURE RANGE:
STORAGE -40°C TO +70°C
OPERATIONAL -10°C TO +60°C

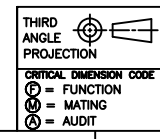
RELATIVE HUMIDITY (OPERATIONAL):
MAXIMUM NON-CONDENSING 93%

PHYSICAL
HOUSING: HIGH-IMPACT, FLAME-RETARDANT PLASTIC UL94V-0 RATED

DCC50/110EFSL	1.80"	1.70"	BLOCK, 110EFS, 50 PR, WITH LEGS
DCC50/110EFS	1.75"	1.70"	BLOCK, 110EFS, 50 PR, W/O LEGS
DCC300/110EFSL	10.80"	10.59"	BLOCK, 110EFS, 300 PR, WITH LEGS
DCC300/110EFS	10.75"	10.59"	BLOCK, 110EFS, 300 PR, W/O LEGS
DCC100/110EFSL	3.60"	3.47"	BLOCK, 110EFS, 100 PR, WITH LEGS
DCC100/110EFS	3.49"	3.47"	BLOCK, 110EFS, 100 PR, W/O LEGS
OCC PART NO.	DIM. "A"	DIM. "B"	DESCRIPTION

UNCONTROLLED COPY

<small>UNLESS OTHERWISE SPECIFIED DIMENSIONS ARE IN INCHES</small> <small>TOLERANCES:</small> <small>FRACTIONS ±1/32"</small> <small>ANGLES ±1/2°</small> <small>3 PLACE DECIMALS ±.005"</small> <small>2 PLACE DECIMALS ±.01</small>	<small>THIS DRAWING AND THE DESIGN SHOWN ARE THE PROPERTY OF OPTICAL CABLE CORPORATION AND MAY NOT BE USED AS THE BASIS FOR MANUFACTURE OR SALE WITHOUT SPECIFIC WRITTEN PERMISSION OF OPTICAL CABLE CORPORATION.</small>		<small>6290 Concourse Drive</small> <small>Roanoke, VA 24019</small> <small>Phone: 800-622-7711</small> <small>Fax: 540-266-0724</small> <small>www.occter.com</small>	
	<small>CHECKED BY</small> R.B.SMITH <small>DATE</small> 2/25/02 <small>ENGINEER</small> J.YANIK <small>DATE</small> 12/7/01 <small>APPROVED</small> D.INGLE <small>DATE</small> 5/23/11 <small>PREVIOUS DWG</small> <small>NEXT DWG</small>		<small>DRAWN BY</small> D.A.HOLBERT <small>DATE</small> 12/7/01 <small>DATE</small> 12/7/01 <small>DATE</small> 5/23/11 <small>FILENAME</small> C105114D.dwg	<small>DWG TITLE</small> PATCH PANEL BLOCK, DCCXXX/110EFS(SL)



CRITICAL DIMENSION CODE
 (F) = FUNCTION
 (M) = MATING
 (A) = AUDIT

MATERIAL
SEE BILL OF MATERIAL

FINISH
SEE NOTES