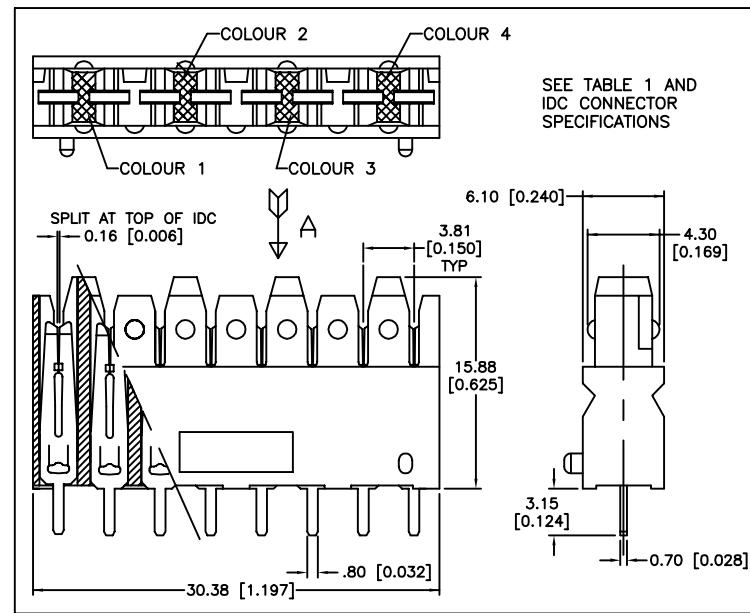


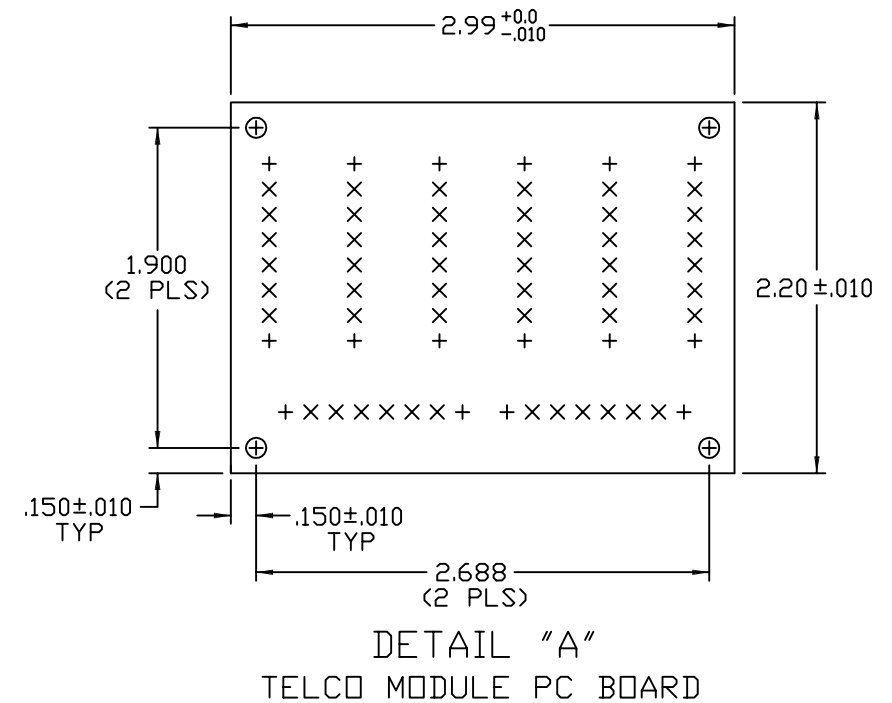
IDC CONNECTOR SPECIFICATIONS:

1. ALL CAVITIES SHALL HAVE CONTACTS INSTALLED. THE DIMENSION 0.05 ± 0.05 FROM EACH CONTACT SHOULDER TO THE ADJACENT BASE OF THE MOULDING.
2. WHEN THE PART NUMBER INDICATES THAT COLOUR CODING IS REQUIRED THE COMPONENT SHALL BE MARKED USING THE COLOURED FOILS SPECIFIED IN THE TABLE.
3. EACH CONTACT MUST WITHSTAND A FORCE OF 30N. IN DIRECTION OF ARROW "A"
4. THE TERMINATION BLOCK SHALL MEET THE FOLLOWING ELECTRICAL REQUIREMENTS:
INSULATION RESISTANCE:
1000MEGOHMS MIN.
VOLTAGE PROOF:
1100/1000 VOLTS A.C. @ 50HERTZ
APPLIED FOR 55/60 SECONDS
5. COLD STAMPED WITH DAY AND YEAR OF MANUFACTURE.
6. 110 IDC CONTACTS ARE PHOSPER BRONZE PLATED WITH TIN.
7. ALL PLASTIC COMPONENTS ARE HIGH IMPACT SELF-EXTINGUISHING POLYMER RATED UL94V-0.
8. UL RATED AND CSA CERTIFIED.



REV		SHT		DESCRIPTION		DATE	ECN	CHECKED
A	ALL	RELEASE	NEW			9/15/03	NEW	RBS

IDC CONNECTOR	TABLE 1					HOUSING
	COLOUR					
2 PAIR 110D	BROWN	GREEN	ORANGE	BLUE	IVORY	

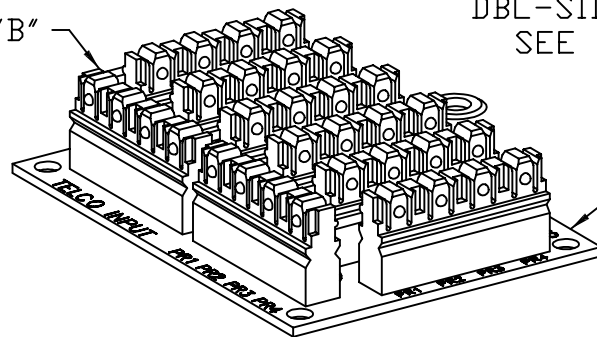


IDC CONNECTOR
SEE ABOVE

DBL-SIDED TAPE
SEE NOTE 1

DETAIL "B"

DETAIL "B"

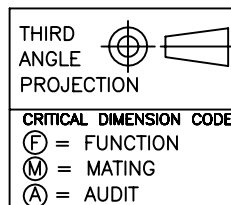


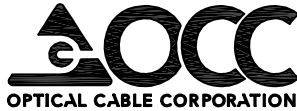
HAX-WP407 SHOWN

DETAIL "A"
SEE NOTE 2

NOTES: UNLESS OTHERWISE SPECIFIED.

1. EACH ASSEMBLY PROVIDED WITH QTY 3 each ATTACHED DBL-SIDED TAPE (PAPER REMAINS ON EXPOSED SIDE).
2. FIBERGLASS, EPOXY, FR-4 .062 NOM THK. SMOBC PROCESS REQUIRED.



HAX-WP407	HOME AXXESS, TELCO MODULE ASSEMBLY, RD2607			
OCC PART NO.	DESCRIPTION			
UNCONTROLLED COPY				
UNLESS OTHERWISE SPECIFIED DIMENSIONS ARE IN INCHES TOLERANCES: FRACTIONS ±1/32" ANGLES ±1/2" 3 PLACE DECIMALS ±.005" 2 PLACE DECIMALS ±.01"	THIS DRAWING AND THE DESIGN SHOWN ARE THE PROPERTY OF OPTICAL CABLE CORPORATION AND MAY NOT BE USED AS THE BASIS FOR MANUFACTURE OR SALE WITHOUT SPECIFIC WRITTEN PERMISSION OF OPTICAL CABLE CORPORATION.		 5290 Concourse Drive Roanoke, VA 24019 Phone: 800-622-7711 Fax: 540-265-0724 www.occfiber.com	
DRAWN BY D.A.HOLBERT	DATE 9/15/03	DWG TITLE		
CHECKED BY R.B.SMITH	DATE 9/17/03	ASSEMBLY DRAWING, HAX-WP407		
ENGINEER J.YANIK	DATE 9/15/03			
APPROVED H.JOHNSON	DATE 4/20/10	SIZE B	DWG NO. C106292	REV A
PREVIOUS DWG	FILENAME C106292A.DWG	SCALE NONE	SHEET 1 OF 1	