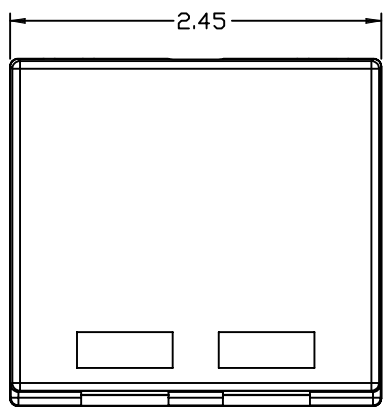
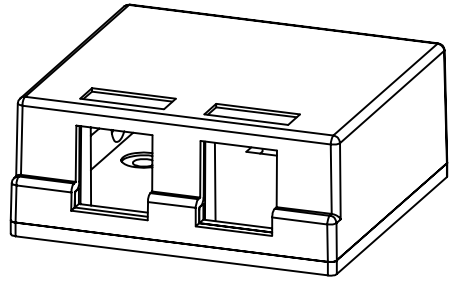


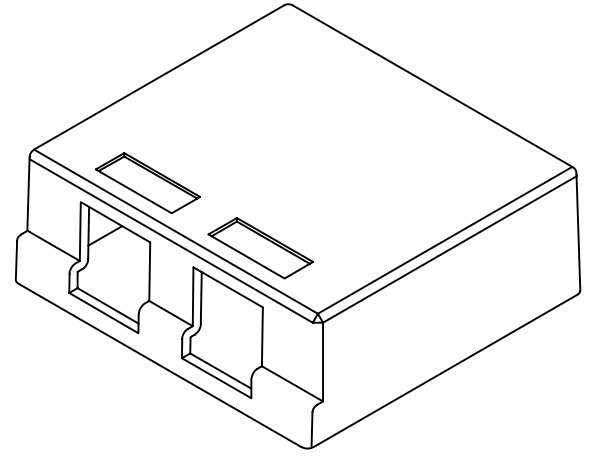
REV		SHT		DESCRIPTION		DATE	ECN	CHECKED
A	ALL	RELEASE	NEW			5/11/05	NEW	RBS



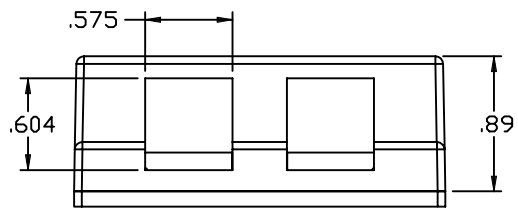
TOP VIEW



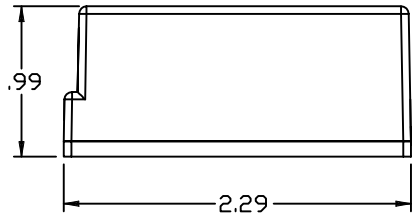
ISOMETRIC VIEW



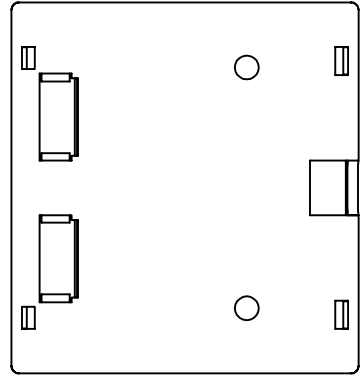
EXPLODED VIEW



FRONT VIEW



RIGHT SIDE



BOTTOM VIEW

SPECIFICATIONS

FEATURES/MATERIALS:


- TWO PORT SURFACE MOUNT ENCLOSURES PROVIDE A COST-EFFECTIVE MOUNTING FOR KMJ JACK APPLICATIONS.
- SURFACE MOUNT ENCLOSURES ARE CONSTRUCTED OF HIGH IMPACT SELF EXTINGUISHING, RATED 94V-0. AVAILABLE IN A VARIETY OF COLORS.
- MOUNTING SCREWS AND DOUBLE-SIDED TAPE INCLUDED.

CODE & COMPLIANCE:


- UL LISTED

SMEK212	SURFACE MOUNT ENCL, 2 PORT, KMJ, BRIGHT WHITE
SMEK201	SURFACE MOUNT ENCL, 2 PORT, KMJ, OFFICE WHITE
SMEK200	SURFACE MOUNT ENCL, 2 PORT, KMJ, ELEC. IVORY
DCC PART NO.	DESCRIPTION

UNCONTROLLED COPY

<small>UNLESS OTHERWISE SPECIFIED DIMENSIONS ARE IN INCHES TOLERANCES: FRACTIONS ±1/32" ANGLES ±1/2° 3 PLACE DECIMALS ±.005" 2 PLACE DECIMALS ±.01"</small>		<small>THIS DRAWING AND THE DESIGN SHOWN ARE THE PROPERTY OF OPTICAL CABLE CORPORATION AND MAY NOT BE USED AS THE BASIS FOR MANUFACTURE OR SALE WITHOUT SPECIFIC WRITTEN PERMISSION OF OPTICAL CABLE CORPORATION.</small>		 5290 Concourse Drive Roanoke, VA 24019 Phone: 800-622-7711 Fax: 540-265-0724 www.occfiber.com	
CHECKED BY	D.A.HOLBERT	DATE	5/11/05	DWG TITLE	SURFACE MOUNT ENCLOSURE, 2 PORT, KMJ, COMMERCIAL
ENGINEER	R.B.SMITH	DATE	5/12/05	SIZE	
APPROVED	J.YANIK	DATE	5/11/05	DWG NO.	C107172
PREVIOUS DWG	D.INGLE	DATE	5/12/05	REV	A
NEXT DWG		FILENAME	C107172A.DWG	SCALE	NONE
				SHEET	1 OF 1

THIRD ANGLE PROJECTION



CRITICAL DIMENSION CODE

- F = FUNCTION
- M = MATING
- A = AUDIT

MATERIAL SEE BILL OF MATERIAL

FINISH SEE NOTES