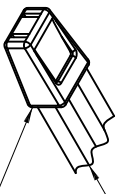


REVISION HISTORY					
REV	SHT	DESCRIPTION	DATE	ECN	CHECKED
A	ALL	RELEASE NEW	4/28/07	NEW	JFM
B	-	ADDED VIEWS OF #8-18 SCREWS	1/27/07	-	JFM
C	-	ADDED VIEW OF FAN POWER LEAD	5/7/08	-	DI



LEADS (1 EACH)  
RED, GREEN, WHITE, BLACK

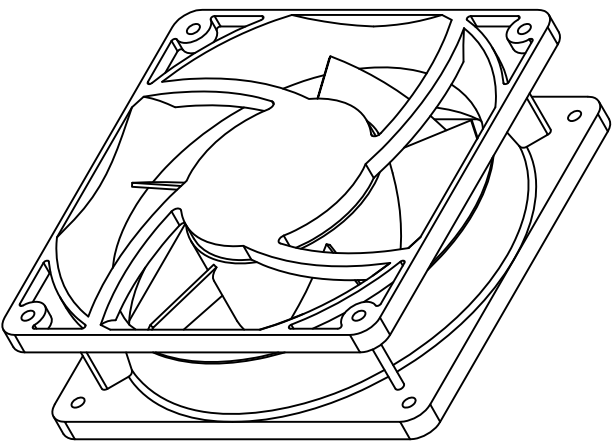
FAN POWER LEAD, TWO PRONG PLUG,  
BLACK, 72" LEAD LENGTHS (1 PLACE)

MX2A1 PLAIN-BEARING FAN,  
115VAC, MX2B1 STYLE, BLACK

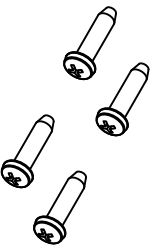
FAN GUARD, (2 PLACES)  
STEEL, NICKEL PLATED

SCREW, #8-18 X 3/4",  
PANHEAD, PHILLIPS,  
(4 PLACES)

FRONT VIEW



REAR VIEW  
(FAN SHOWN ONLY FOR CLARITY)



SCREW, #8-18 X 3/4", PANHEAD, PHILLIPS  
FOR FAN GUARD MOUNTING (4 PLACES)

UNCONTROLLED COPY

TERAX-FK	FAN-KIT FOR TERAX WALL MOUNT CABINET
OPTICAL PIN	DESCRIPTION

UNLESS OTHERWISE SPECIFIED  
DIMENSIONS ARE IN INCHES  
TOLERANCES: FRACTIONS ±1/32"  
DECIMALS: ANGLES ±1/2°  
3 PLACE DECIMALS ±.005"  
2 PLACE DECIMALS ±.01"

THIS DRAWING AND THE DESIGN SHOWN ARE THE  
PROPERTY OF OPTICAL CABLE CORPORATION  
AND MAY NOT BE USED AS THE BASIS FOR MANU-  
FACTURE OR SALE WITHOUT SPECIFIC WRITTEN  
PERMISSION OF OPTICAL CABLE CORPORATION.

DRAWN J. YANIK DATE 4/28/07  
CHECKED J. MALTALS DATE 5/2/07  
ENGINEER J. YANIK DATE 4/28/07

APPROVED D. JINGLE DATE 5/7/08  
PREVIOUS DWG

FILENAME C108329C.DFT

**OC**  
OPTICAL CABLE CORPORATION

5290 Concourse Drive  
Ranoke, VA 24019  
Phone: 800-622-7711  
Fax: 540-295-0724  
www.opticalcorp.com

FAN KIT FOR TERAX  
WALL MOUNT CABINET

THIRD ANGLE PROJECTION	MATERIAL	FINISH	SIZE	DWG NO.	SCALE	SHEET
	SEE BILL OF MATERIAL	SEE NOTES	B	C108329	NONE	1 OF 1
UNCONTROLLED COPY			REV			
			C			

UNCONTROLLED COPY