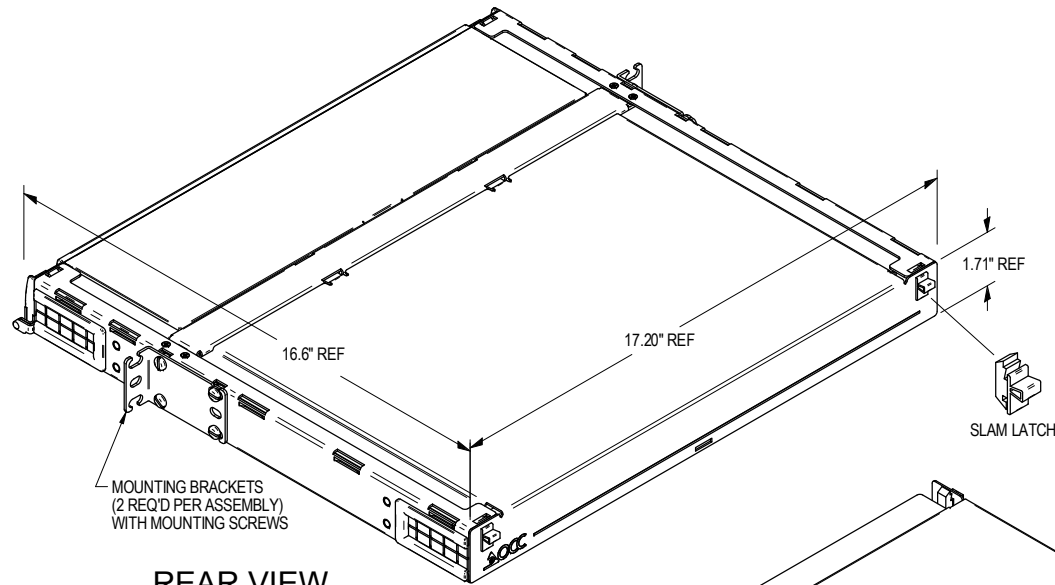


REVISION HISTORY				
REV/SHT	DESCRIPTION	DATE	ECN	CHECKED
A	ALL RELEASE NEW	1/14/14	NEW	JH

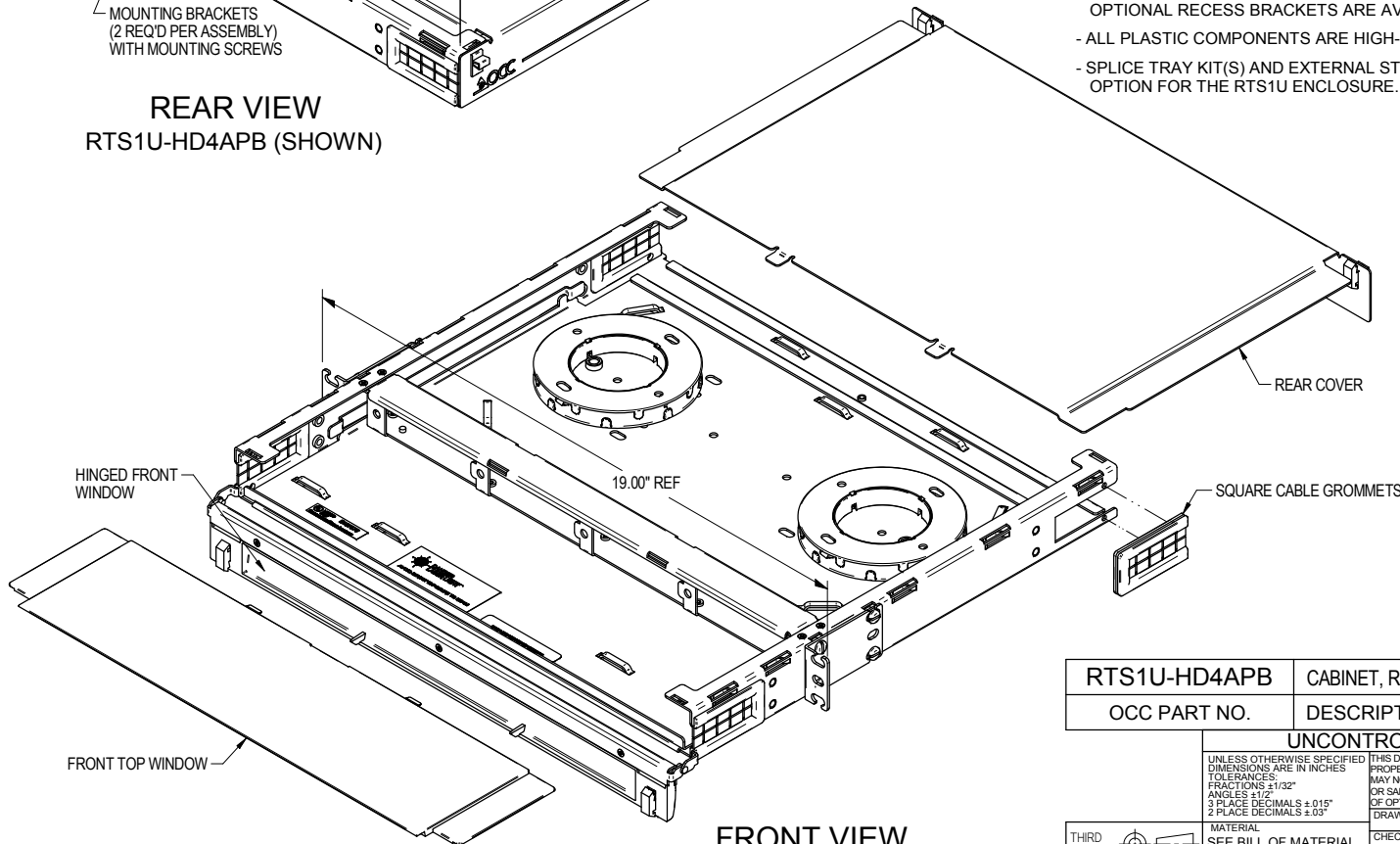
## SPECIFICATIONS

### FEATURES & BENEFITS:

- OPTICAL CABLE CORPORATION'S, RTS1U SERIES LOW PROFILE FIBER OPTIC CROSS CONNECT ENCLOSURES PROVIDE FIBER MANAGEMENT, CONNECTIVITY, AND DISTRIBUTION FOR 6-48 FIBERS. ACCOMMODATES ALL CROSS CONNECT FUNCTIONS (SPlicing, TERMINATION, AND INTERCONNECTION) FOR OUTSIDE PLANT, BACKBONE, AND BUILDING CABLES.
- ACCOMMODATES OCC HD SNAP-IN ADAPTER PLATES. RTS1U ENCLOSURE PORT COUNT IS BASED UPON THE PORT DENSITY OF THE ADAPTER PLATES. ADAPTER PLATES ORDERED SEPARATELY.
- RTS1U ENCLOSURES PROVIDE INNOVATIVE FIBER ORGANIZATION UTILIZING STACKABLE FIBER HOOPS DESIGNED TO MAINTAIN ORDERLY FIBER MANAGEMENT AND ALLOW FOR GREATER SEGREGATION OF INCOMING FIBER CABLES
- PLASTIC GROMMETS PROVIDE RELIABLE CABLE PROTECTION AT ALL CABLE ENTRANCES AND EXITS.
- RUGGED 16-GAUGE STEEL CONSTRUCTION WITH A DURABLE POWDER COAT FINISH.  
RTS1U DRAWER COLOR: B = BLACK
- SLIDING TRAY PROVIDE EASY FRONT AND REAR ACCESS AND CAN BE REMOVED ENTIRELY FROM THE ENCLOSURE FOR A CONVENIENT WORK SURFACE
- HINGED TRANSPARENT COVER ALLOWS FOR VISUAL INSPECTION OF PORTS AND DEFINED LABELING FIELD PROVIDED FOR TIA 606A COMPLIANCE.
- STANDARD UNIVERSAL MOUNTING BRACKETS INCLUDED TO FIT 19" AND 23" RACKS OR CABINETS. OPTIONAL RECESS BRACKETS ARE AVAILABLE TO ALLOW RTS1U ENCLOSURES TO FIT FLUSH WITH RACK
- ALL PLASTIC COMPONENTS ARE HIGH-IMPACT SELF-EXTINGUISHING, UL LISTED RATING 94 V-0.
- SPLICE TRAY KIT(S) AND EXTERNAL STRAIN RELIEF BRACKETS MAY BE ORDERED SEPARATELY AS AN OPTION FOR THE RTS1U ENCLOSURE.



**REAR VIEW**  
RTS1U-HD4APB (SHOWN)





**FRONT VIEW**  
(TOP WINDOW REMOVED FOR CLARITY)  
RTS1U-HD4APB (SHOWN)

## UNCONTROLLED COPY

"OPTICAL CABLE CORPORATION (OCC)  
RESERVES THE RIGHT TO REVISE ANY  
RACK CABINET SPECIFICATIONS."

RTS1U-HD4APB	CABINET, RACK MNT, RTS, 1 UNIT, 4 ADAPTER PLATES, BLACK, HIGH DENSITY
OCC PART NO.	DESCRIPTION

		UNCONTROLLED COPY		 33 Superior Way Swannanoa, NC 28778 Phone: 828-298-2260 Fax: 828-298-2487 www.occfiber.com	
		UNLESS OTHERWISE SPECIFIED DIMENSIONS ARE IN INCHES TOLERANCES: FRACTIONS ±1/32" ANGLES ±1/2° 3 PLACE DECIMALS ±.015" 2 PLACE DECIMALS ±.03"			
		THIS DRAWING AND THE DESIGN SHOWN ARE THE PROPERTY OF OPTICAL CABLE CORPORATION AND MAY NOT BE USED AS THE BASIS FOR MANUFACTURE OR SALE WITHOUT SPECIFIC WRITTEN PERMISSION OF OPTICAL CABLE CORPORATION.		DWG TITLE <b>CUSTOMER DRAWING, CABINET ASSEMBLY, RTS1U, RACK MNT SLIDING, 4 PLATES</b>	
		DRAWN D.A.HOLBERT DATE 1/14/14			
		CHECKED S.PORACH DATE 1/20/14			
		ENGINEER J.YANIK DATE 1/14/14			
		APPROVED J.HOWE DATE 1/20/14			
		PREVIOUS DWG			
		NEXT DWG			
				SCALE: NONE	
				SHEET 2 OF 2	
				REV A	

THIRD ANGLE PROJECTION	
CRITICAL DIMENSION CODE	
Ⓢ = FUNCTION	
Ⓜ = MATING	
Ⓐ = AUDIT	

MATERIAL SEE BILL OF MATERIAL	FINISH SEE NOTES
----------------------------------	---------------------

THIRD ANGLE PROJECTION
CRITICAL DIMENSION CODE ① = FUNCTION ② = MATING ③ = AUDIT

FINISH  
SEE NOTES