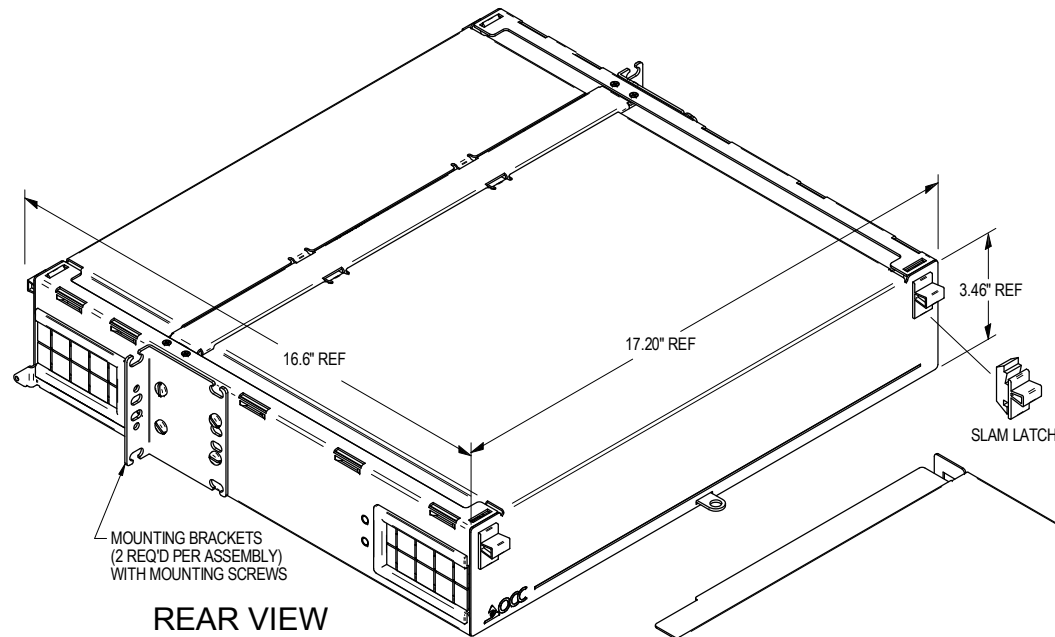


REVISION HISTORY					
REV	SHT	DESCRIPTION	DATE	ECN	CHECKED
A	ALL	RELEASE NEW	1/14/14	NEW	JH

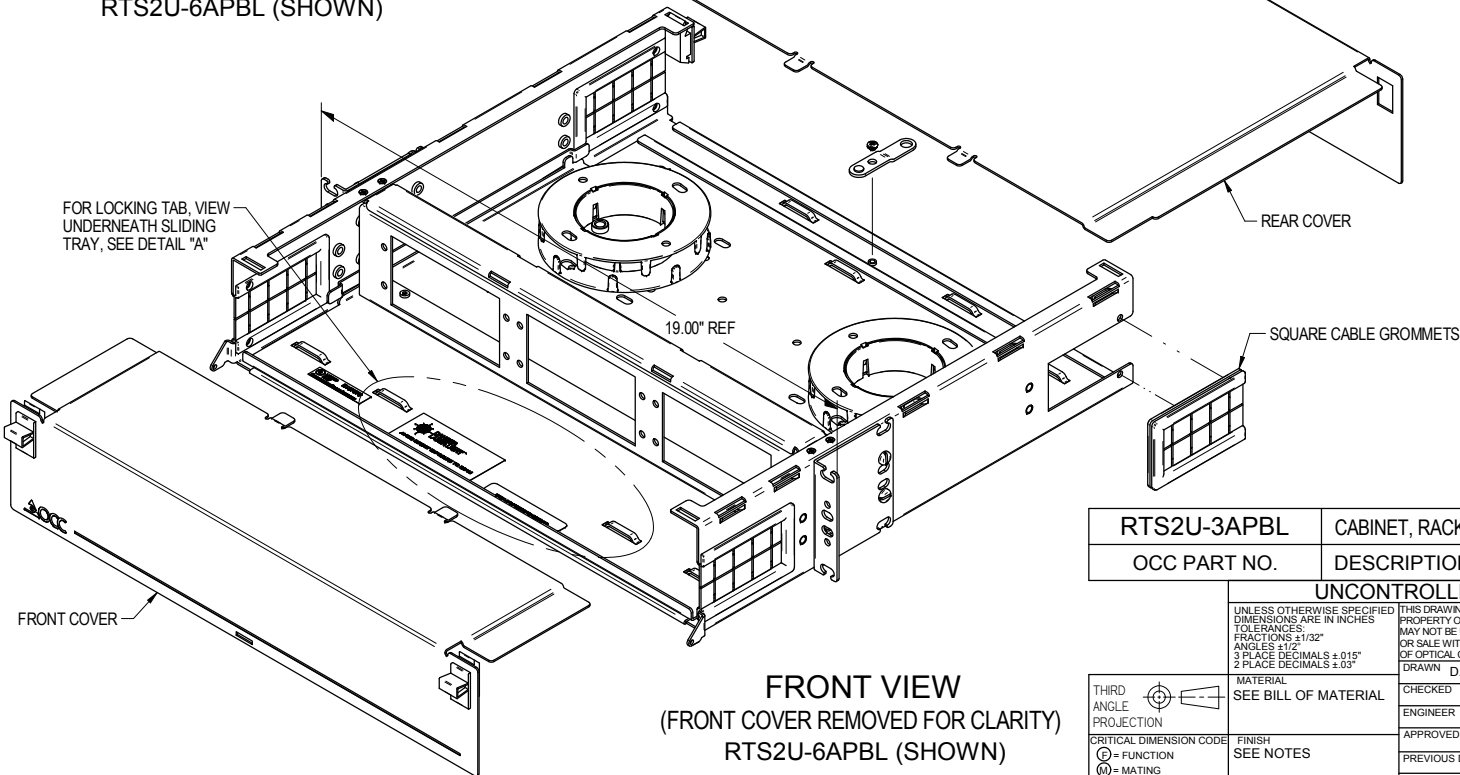
SPECIFICATIONS

FEATURES & BENEFITS:

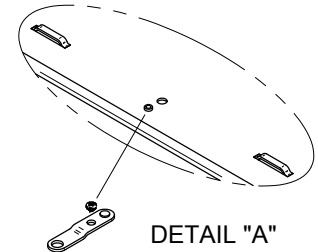
- OPTICAL CABLE CORPORATION'S, RTS2U SERIES LOW PROFILE FIBER OPTIC CROSS CONNECT ENCLOSURES PROVIDE FIBER MANAGEMENT, CONNECTIVITY, AND DISTRIBUTION FOR 6-72 FIBERS. ACCOMMODATES ALL CROSS CONNECT FUNCTIONS (SPlicing, TERMINATION, AND INTERCONNECTION) FOR OUTSIDE PLANT, BACKBONE, AND BUILDING CABLES.
- ACCOMMODATES OCC 600 SERIES SNAP-IN ADAPTER PLATES. RTS2U ENCLOSURE PORT COUNT IS BASED UPON THE PORT DENSITY OF THE ADAPTER PLATES. ADAPTER PLATES ORDERED SEPARATELY.
- RTS2U ENCLOSURES PROVIDE INNOVATIVE FIBER ORGANIZATION UTILIZING STACKABLE FIBER HOOPS DESIGNED TO MAINTAIN ORDERLY FIBER MANAGEMENT AND ALLOW FOR GREATER SEGREGATION OF INCOMING FIBER CABLES
- PLASTIC GROMMETS PROVIDE RELIABLE CABLE PROTECTION AT ALL CABLE ENTRANCES AND EXITS.
- RUGGED 16-GAUGE STEEL CONSTRUCTION WITH A DURABLE POWDER COAT FINISH. RTS2U DRAWER COLOR: B = BLACK
- SLIDING TRAY PROVIDE EASY FRONT AND REAR ACCESS AND CAN BE REMOVED ENTIRELY FROM THE ENCLOSURE FOR A CONVENIENT WORK SURFACE
- HINGED TRANSPARENT COVER ALLOWS FOR VISUAL INSPECTION OF PORTS AND DEFINED LABELING FIELD PROVIDED FOR TIA 606A COMPLIANCE.
- STANDARD UNIVERSAL MOUNTING BRACKETS INCLUDED TO FIT 19" AND 23" RACKS OR CABINETS. OPTIONAL RECESS BRACKETS ARE AVAILABLE TO ALLOW RTS2U ENCLOSURES TO FIT FLUSH WITH RACK
- ALL PLASTIC COMPONENTS ARE HIGH-IMPACT SELF-EXTINGUISHING, UL LISTED RATING 94 V-0.
- SPLICE TRAY KIT(S) AND EXTERNAL STRAIN RELIEF BRACKETS MAY BE ORDERED SEPARATELY AS AN OPTION FOR THE RTS2U ENCLOSURE.



REAR VIEW
RTS2U-6APBL (SHOWN)




FRONT VIEW
(FRONT COVER REMOVED FOR CLARITY)
RTS2U-6APBL (SHOWN)



DETAIL "A"

UNCONTROLLED COPY

"OPTICAL CABLE CORPORATION (OCC)
RESERVES THE RIGHT TO REVISE ANY
RACK CABINET SPECIFICATIONS."

RTS2U-3APBL		CABINET, RACK MNT, RTS, 2 UNIT, 6 ADAPTER PLATES, BLACK, LOCKABLE			
OCC PART NO.		DESCRIPTION			
		UNCONTROLLED COPY			
UNLESS OTHERWISE SPECIFIED DIMENSIONS ARE IN INCHES TOLERANCES: FRACTIONS $\pm 1/32$ " ANGLES $\pm 1/2$ " 3 PLACE DECIMALS ± 0.015 " 2 PLACE DECIMALS ± 0.03 "		THIS DRAWING AND THE DESIGN SHOWN ARE THE PROPERTY OF OPTICAL CABLE CORPORATION AND MAY NOT BE USED AS THE BASIS FOR MANUFACTURE OR SALE WITHOUT SPECIFIC WRITTEN PERMISSION OF OPTICAL CABLE CORPORATION.		 33 Superior Way Swannanoa, NC 28778 Phone: 828-298-2260 Fax: 828-298-2487 www.occfiber.com	
MATERIAL SEE BILL OF MATERIAL		DRAWN D.A.HOLBERT	DATE 1/14/14	DWG TITLE CUSTOMER DRAWING, CABINET ASSEMBLY, RTS2U, RACK MNT SLIDING, 6 PLATES	
FINISH SEE NOTES		CHECKED S.PORACH	DATE 1/21/14	SIZE C	
THIRD ANGLE PROJECTION		ENGINEER J.YANIK	DATE 1/14/14	DWG NO. C111660	
CRITICAL DIMENSION CODE		APPROVED J.HOWE	DATE 1/30/14	REV A	
() = FUNCTION (M) = MATING (A) = AUDIT		PREVIOUS DWG	DATE	SCALE: NONE	
NEXT DWG		FILENAME C111660S1A.dft	DATE	SHEET 1 OF 2	