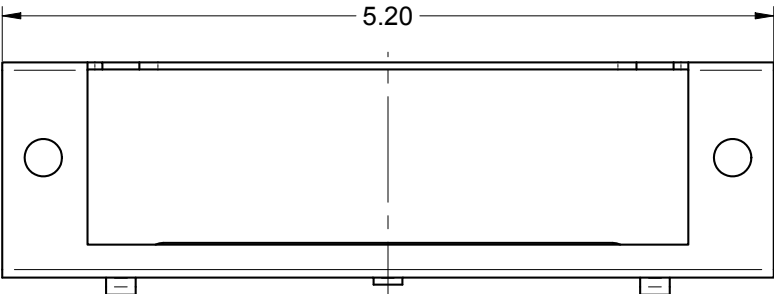
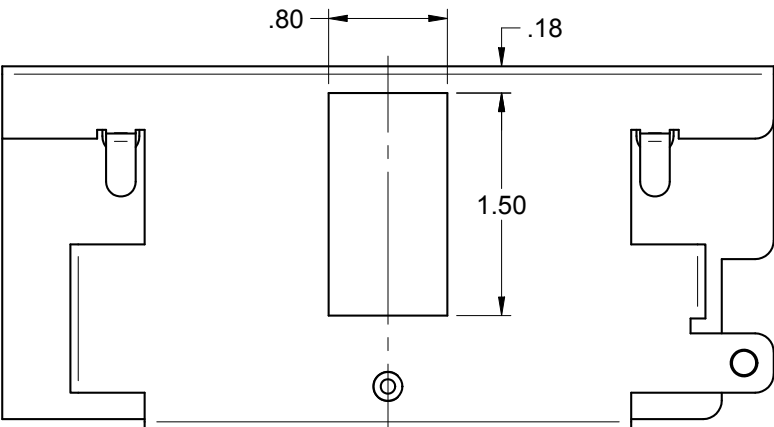


TOP VIEW



FRONT VIEW

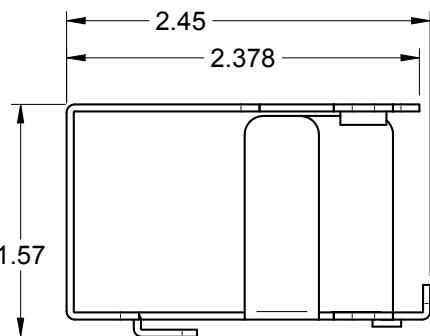


BOTTOM VIEW

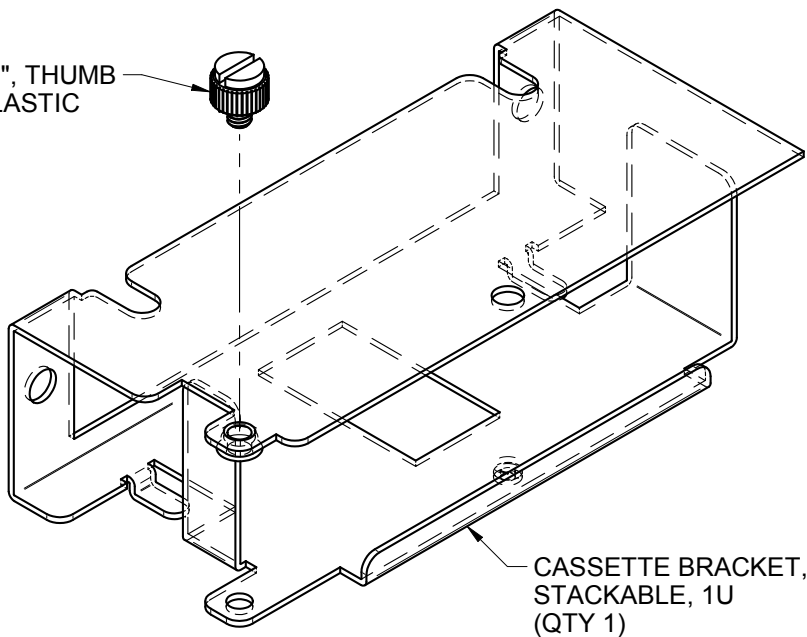
FEATURES:

- ACCOMODATES LGX STYLE MODULES.
- STACKABLE MOUNTING FOR HIGHER DENSITY.
- MAY BE MOUNTED IN RTC/RTS RACK MOUNT ENCLOSURES AND WTC6/8/12/16 WALL MOUNT ENCLOSURES.

SCREW, #8-32 x 3/16", THUMB
SLOTTED, BLACK PLASTIC
(QTY 1)



RIGHT SIDE



"OPTICAL CABLE CORPORATION (OCC)
RESERVES THE RIGHT TO REVISE ANY
AND ALL DESIGN SPECIFICATIONS."

UNCONTROLLED COPY

THIRD
ANGLE
PROJECTION

CRITICAL DIMENSION CODE
(F) = FUNCTION
(M) = MATING
(A) = AUDIT

UNLESS OTHERWISE SPECIFIED DIMENSIONS ARE IN INCHES. TOLERANCES: FRACTIONS ±1/32" ANGLES ±1/2° 3 PLACE DECIMALS ±.005" 2 PLACE DECIMALS ±.01"	
MATERIAL SEE BILL OF MATERIAL	FINISH N/A
THIS DRAWING AND THE DESIGN SHOWN ARE THE PROPERTY OF OPTICAL CABLE CORPORATION AND MAY NOT BE USED AS THE BASIS FOR MANUFACTURE OR SALE WITHOUT SPECIFIC WRITTEN PERMISSION OF OPTICAL CABLE CORPORATION.	
DRAWN D.A.HOLBERT	DATE 11/12/20
CHECKED J.HOWE	DATE 1/13/21
ENGINEER J.YANIK	DATE 11/12/20
APPROVED J.CALLOWAY	DATE 1/19/21
PREVIOUS DWG	
NEXT DWG	FILENAME C113553A.dft

LGXSCB1U		BRACKET, STACKABLE CASSETTE, 1U, LGX	
OCC PART NO.		DESCRIPTION	
DRAWN D.A.HOLBERT		DATE 11/12/20	
CHECKED J.HOWE		DATE 1/13/21	
ENGINEER J.YANIK		DATE 11/12/20	
APPROVED J.CALLOWAY		DATE 1/19/21	
PREVIOUS DWG			
NEXT DWG		FILENAME C113553A.dft	
DWG TITLE		KIT, BRACKET, 1U, LGX, STACKABLE CASSETTE	
SIZE B		DWG NO. C113553	
REV A			
SCALE: NONE		SHEET 1 OF 1	



33 Superior Way
Swannanoa, NC 28778
Phone: 828-298-2260
Fax: 828-298-2487
www.occfiber.com