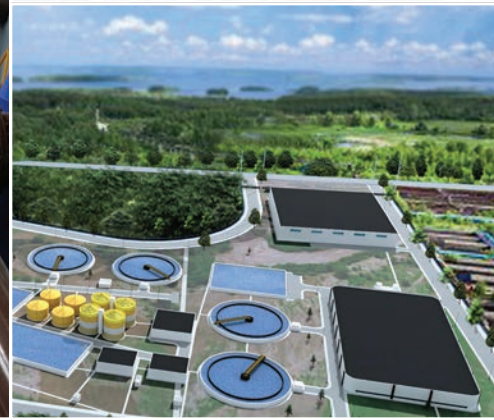




Connections You Can Count On.™

INDUSTRY SOLUTIONS: WATER AND WASTEWATER TREATMENT



LESS IS MORE.

LESS DOWNTIME

Achieve less or no downtime with the superior transmission reliability of OCC cables, tested beyond industry standards used by other manufacturers. OCC's Indoor/Outdoor cables transition splice-free from OSP to inside the building for fewer points of potential network failure.

LESS MAINTENANCE AND WORRY

Better reliability leads to fewer network problems, eliminating the time and cost of additional maintenance associated with loose-tube and ribbon cabling.

LESS TIME AND SPACE

By using small diameter cables and innovative products like our pre-terminated enclosures, cable assemblies, and kitting, we can help you design a customized high-density, space-saving system that reduces installation time by 25 percent.

LESS COST

The reliability advantages of OCC cables address the major points of the EPA's Asset Management Guidelines: less likelihood of network failure, cabling problems, and emergency response costs. Bottom line? You can count on a lower total cost of ownership.

LESS CHALLENGE

We are harsh environment specialists who can provide solutions for your most challenging water and wastewater facility network needs. Our team of engineers are experts in custom building end-to-end solutions for your project. Whether you need to modernize your administrative office, expand your security monitoring plan, or update your entire legacy facility, we're ready to assist you. Let OCC relieve your headache.



TABLE OF CONTENTS:

| | |
|----------------------------------------------------|------------|
| Introduction to OCC Water and Wastewater Solutions | Page 2-3 |
| Water Treatment Solutions | Page 4-9 |
| Wastewater Treatment Solutions | Page 10-15 |
| Product Highlights | Page 16-21 |
| Customer Support | Page 22-23 |
| Global Partners and Locations | Page 24 |

NOT JUST PRODUCTS. ANSWERS.

We get it. The more challenging your network becomes, the more challenging it is to know which products to use, how to integrate them, budget them, and make sure they keep your network running with zero downtime. Like other industries, water and wastewater treatment plants must keep up with ever-growing high-bandwidth technology advancements, such as more sophisticated SCADA systems, smart device applications, IP transmission, HD video security, and emerging technologies.

That's why instead of relying on OCC just for products, our customers count on our design-build expertise and broad portfolio of end-to-end cabling and connectivity solutions for the seamless integration and optimum reliability of the network.

RELIABILITY TESTING AND INNOVATION:

At OCC, we take reliability seriously—so much so that we independently test all of our products and new innovations well above industry body standards to ensure the highest transmission performance of your network.

CONNECTIONS YOU CAN COUNT ON.

At OCC, we're well known for our expertise in developing innovative, reliable, harsh environment network solutions. In the 1980s, OCC designed and invented helically stranded, tight-bound, and tight-buffered cables; unlike loose-tube and ribbon-fiber cable, OCC's cables are designed for the most extreme environmental situations.

The water and wastewater industries need that kind of reliability. That's why we've expanded to include a broad portfolio of end-to-end harsh

and controlled environment fiber, copper, and connectivity solutions to precisely serve every area of your network. In addition, you'll see that many of our product innovations will save you plenty of time, labor, and maintenance costs.

So whether your project is a new greenfield or a legacy water or wastewater treatment plant, you're empowered with the most reliable network solutions to keep your network, HMI, SCADA, PLCs, RTUs, and all control process locations running 24-7.

OUR END-TO-END NETWORK SOLUTIONS INCLUDE:

CABLING INFRASTRUCTURE: OCC offers a broad portfolio of the industry's strongest, yet highly bendable, battle-tested trunk, distribution, and breakout fiber cables in a myriad of fiber types, counts, jackets, and configurations. OCC also provides copper cabling to meet your specific needs for your backbone and network applications.

CONNECTIVITY AND TERMINATION: We offer a wide range of specifically designed fiber and copper connectors, enclosures, cabinets,

patch panels, pre-terminated cable assemblies, and plug-and-play solutions for seamless integration, providing the most reliable network transmission and signal integrity.

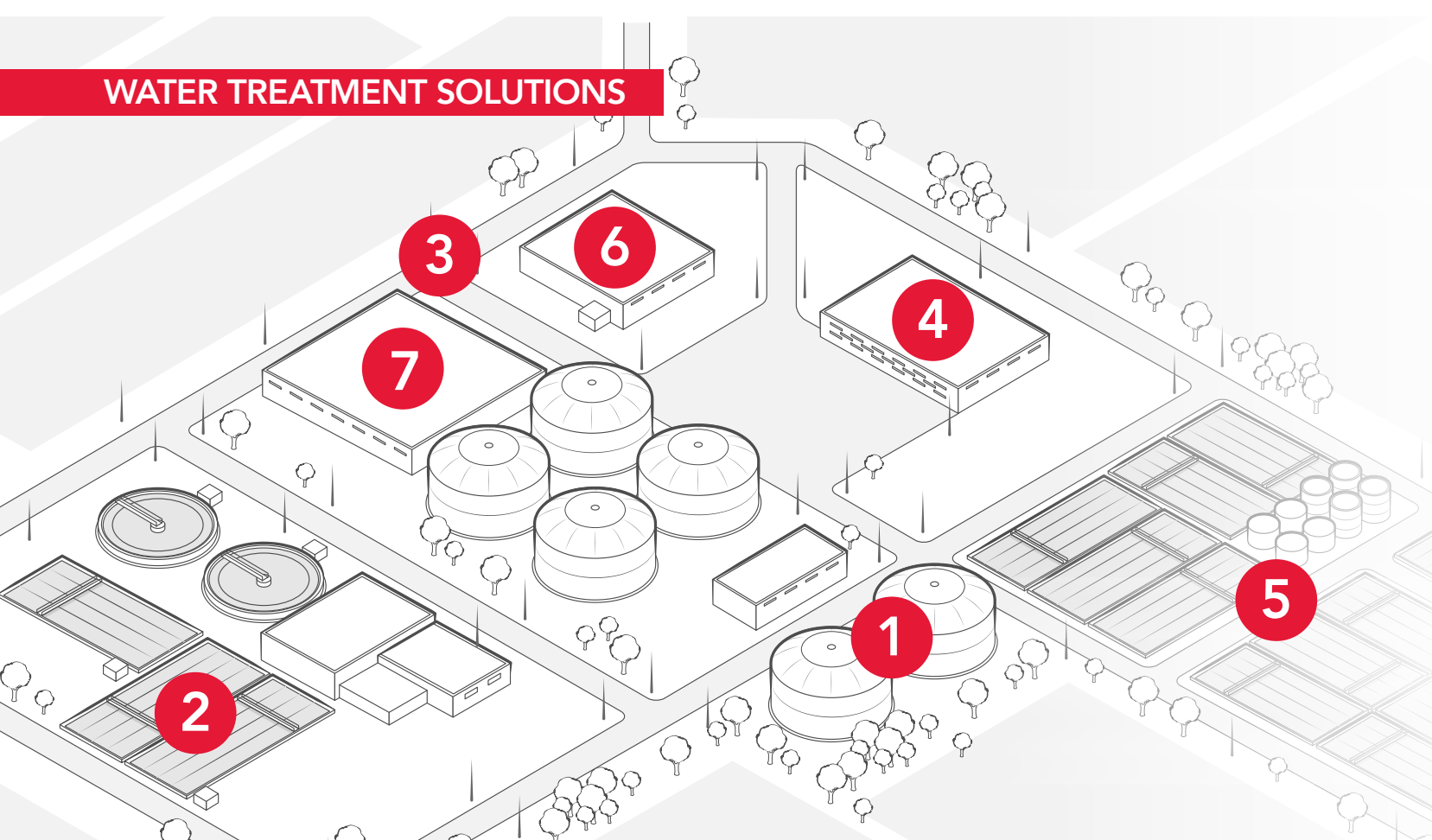
ENCLOSURES AND RACK SYSTEMS: With the latest in blades, cassettes, adapter plates, and broad options of racks and cabinets, your cable management, MACs, and the future expansion of your network becomes fast, easy, and low-maintenance, all while minimizing the operational costs of the project.

It's a necessity. Water treatment plants provide life-sustaining clean water for our communities; as such, the most reliable products must be used to ensure zero downtime.

As technologies evolve, all processes of the facility—from the administrative buildings to the filtration tanks—need to run without a hitch.

OCC offers a full range of harsh environment and controlled environment products to suit every application of your facility. Whether you are updating the ever-important security system of the facility, future-proofing the PLCs, or directing the future migration path of your project, OCC has an answer for you. With our team of engineers and technical specialists, we will work with you to design an end-to-end solution for your water treatment plant.

WATER TREATMENT SOLUTIONS



EXAMPLE OF A COMPLETE END-TO-END SOLUTION:
MASTER CONTROL CENTER (AREA 7)



1 WATER STORAGE TANKS/CONTROLS

- Cables:**
- BX Series (BX002KWLSOP + BX006KSLA9YP)
- Connectivity:**
- Fiber Adapter Panel (6112MMDLC)
 - Fiber Pigtail (P6LC12-3M)
 - R-Jack (ECSK2201U00)
- Enclosures:**
- NEMA-4X Fiber Enclosures (OCO12NX or OCO12NXS)
 - DIN Rail Box (DTC-1AP)
 - ZDM Enclosure (ZDMB6B)
- Assemblies:**
- Cat 6 Patchcord (PCSIX03B06)
 - LC to LC Fiber Jumper (D5GLC-LC-3M)

2 RECEIVING WELL

- Cables:**
- BX Series (BX002KWLSOP + BX006KSLA9YP)
- Connectivity:**
- Fiber Adapter Panel (6112MMDLC)
 - Fiber Pigtail (P6LC12-3M)
 - R-Jack (ECSK2201U00)
- Enclosures:**
- NEMA-4X Fiber Enclosures (OCO12NX or OCO12NXS)
 - DIN Rail Box (DTC-1AP)
 - ZDM Enclosure (ZDMB6B)
- Assemblies:**
- Cat 6 Patchcord (PCSIX03B06)
 - LC to LC Fiber Jumper (D5GLC-LC-3M)

3 SECURITY GATES/MONITORING AREAS

- Cables:**
- DX Series (DX024DSLS9KR + DX006DALS9KR12)
 - CX Series (CX004K***9KP)
- Connectivity:**
- L-JACK™ Fiber Optic Connector (RLRK121LC02B)
- Enclosures:**
- NEMA-4X Fiber Enclosures (OCO12NX or OCO12NXS)
- Assemblies:**
- Cat 6 Patchcord (PCSIX03B06)
 - LC to LC Fiber Jumper (D5GLC-LC-3M)

4 MOTOR CONTROL CENTER/PUMPING STATIONS

- Cables:**
- BX Series (BX006KSLA9YP)
 - DX Series (DX012DWLST9KR)
- Connectivity:**
- R-Jack (ECSK2201U00)
- Enclosures:**
- NEMA-4X Fiber Enclosures (OCO12NX or OCO12NXS)
 - DIN Rail Box (DTC-1AP)
 - ZDM Enclosure (ZDMB6B)
- Assemblies:**
- Cat 6 Patchcord (PCSIX03B06)
 - LC to LC Fiber Jumper (D5GLC-LC-3M)

5 FILTRATION TANKS

- Cables:**
- BX Series (BX002KWLSOP + BX006KSLA9YP),
 - DX Series (DX006DALS9KR12)
- Connectivity:**
- Fiber Adapter Panel (6112MMDLC)
 - Fiber Pigtail (P6LC12-3M)
 - R-Jack (ECSK2201U00)
- Enclosures:**
- NEMA-4X Fiber Enclosures (OCO12NX or OCO12NXS)
 - DIN Rail Box (DTC-1AP)
 - ZDM Enclosure (ZDMB6B)

6 ADMINISTRATION OFFICE

- Assemblies:**
- Cat 6 Patchcord (PCSIX03B06)
 - LC to LC Fiber Jumper (D5GLC-LC-3M)

7 MASTER CONTROL CENTER

- Cables:**
- DX Series (DX024DSLS9KR)
 - HC Series (HC048DSLACKR)
 - GX Series (GX096DSLA9YP)
- Connectivity:**
- Category 6 Jack (KMJA6)
 - Patch Panel (DCC4888/110SIX)
 - Field Terminable Plug (OCCUFP6A)
- Enclosures:**
- Rack (CMR45)
 - Cabinet (CC3807)
 - RTS Fiber Enclosure (RTS1U-3APB/RTC1U-3APB)
- Assemblies:**
- Cat 6 Patchcord (PCSIX03B06)
 - LC to LC Fiber Jumper (D5GLC-LC-3M)

CUSTOMER: TAMPA BAY WATER TREATMENT FACILITY

THE CHALLENGE

Upgrade a water treatment facility from copper to fiber optic cabling to help fend off lightning strikes, gnawing animals, environmental toxins, and other threats that can interrupt critical communications and control in remote locations.

THE OCC SOLUTION

Avoid electromagnetic interference by replacing the current copper network with OCC's DX-Series Distribution Fiber Cable as well as rugged rack and wall mount enclosures, resulting in a dramatic decrease in the need for maintenance and upkeep.

CLIENT ASSESSMENT

"With the copper, I used to get service calls on a regular basis about that wellfield. Since the upgrade [to fiber optic cabling], I have not yet had to return except to install more fiber."

– Robb Olsen, Project Manager
BCI Integrated Solutions

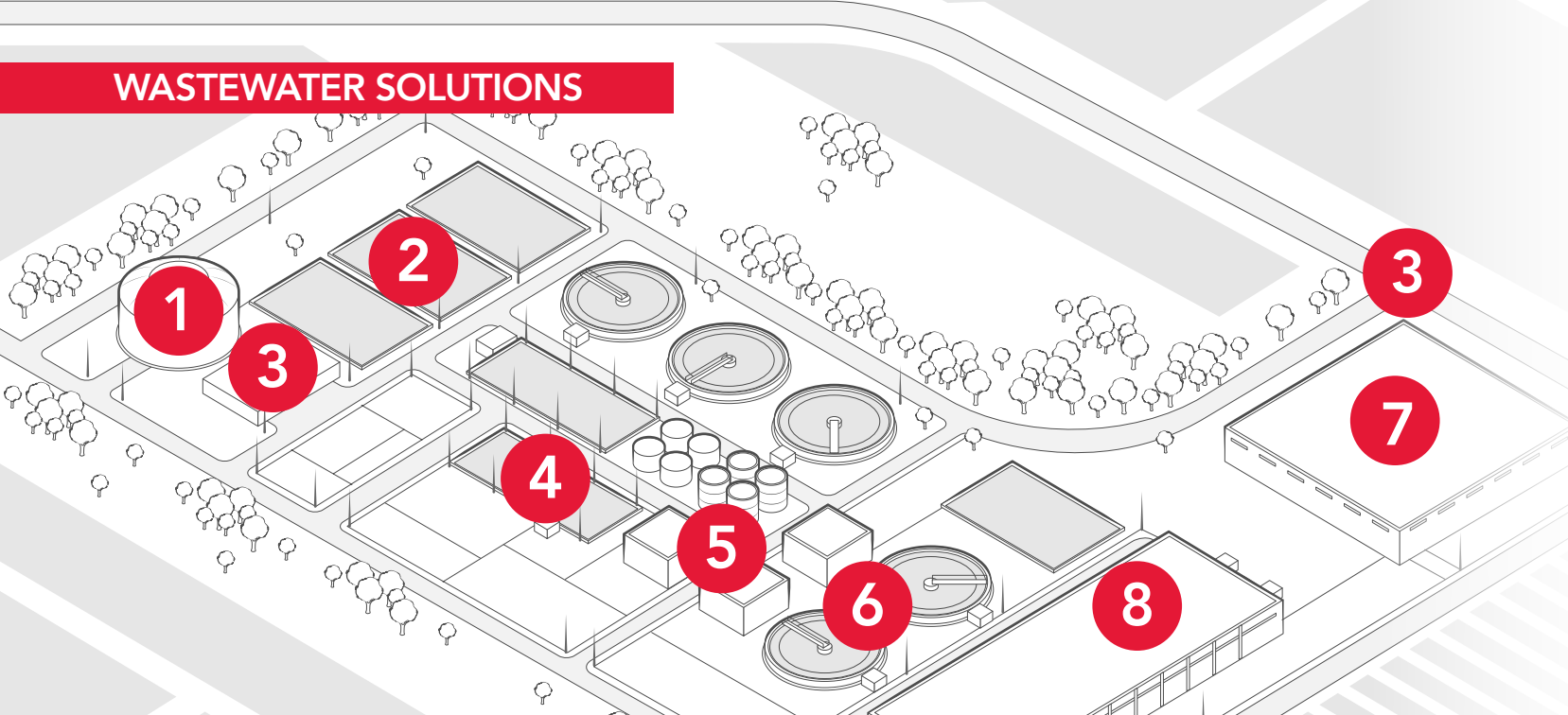


Sludge and grit. Caustic chemicals. Stifling humidity. All of these elements can ravage the mission critical network of a water treatment facility plant. Every year, serious accidents occur at facilities around the world and are often attributable to a breakdown in the communications systems that monitor and control the flow of critical plant processes through various treatment stages and vessels.

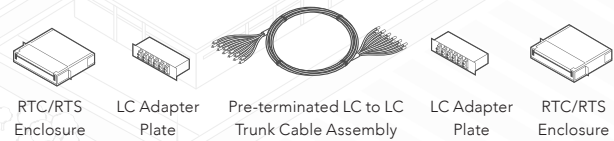
Events such as overflows caused by motors or valves failing to actuate can result in flooding that spills potentially millions of gallons of untreated sewage into waterways and communities, threatening the ecosystem as well as the health of residents.

For these reasons, today's efficient wastewater treatment plants (WWTPs) are basing their communications network infrastructures on ultra-reliable, high-speed fiber optic cabling, coupled with connection and control devices that are designed to withstand the harshest of environments. This approach not only protects against environmental accidents, but can also ensure optimum plant throughput, security, and compliance. At OCC, durability and ruggedness are in our DNA. We offer a broad range of harsh environment products as well as end-to-end solutions for more benign settings like administrative offices.

WASTEWATER SOLUTIONS



EXAMPLE OF A COMPLETE END-TO-END SOLUTION:
MOTOR CONTROL CENTER (AREA 5)



1 WATER STORAGE TANKS/CONTROLS

- Cables:**
- BX Series (BX002KWLSOP + BX006KSLA9YP)
- Connectivity:**
- Fiber Adapter Panel (6112MMDLC)
 - Fiber Pigtail (P6LC12-3M)
 - R-Jack (ECSK2201U00)
- Enclosures:**
- NEMA-4X Fiber Enclosures (OCO12NX or OCO12NXS)
 - DIN Rail Box (DTC-1AP)
 - ZDM Enclosure (ZDMB6B)
- Assemblies:**
- Cat 6 Patchcord (PCSIX03B06)
 - LC to LC Fiber Jumper (D5GLC-LC-3M)

- Enclosures:**
- NEMA-4X Fiber Enclosures (OCO12NX or OCO12NXS)
 - DIN Rail Box (DTC-1AP)
 - ZDM Enclosure (ZDMB6B)
- Assemblies:**
- Cat 6 Patchcord (PCSIX03B06)
 - LC to LC Fiber Jumper (D5GLC-LC-3M)

3 SECURITY GATES/MONITORING AREAS

- Cables:**
- DX Series (DX024DLS9KR + DX006DALS9KR12)
 - CX Series (CX004K***9KP)
- Connectivity:**
- L-JACK™ Fiber Optic Connector (RLRK121LC02B)
- Enclosures:**
- NEMA-4X Fiber Enclosures (OCO12NX or OCO12NXS)
- Assemblies:**
- Cat 6 Patchcord (PCSIX03B06)
 - LC to LC Fiber Jumper (D5GLC-LC-3M)

2 RETENTION POND

- Cables:**
- BX Series (BX002KWLSOP + BX006KSLA9YP)
- Connectivity:**
- Fiber Adapter Panel (6112MMDLC)
 - Fiber Pigtail (P6LC12-3M)
 - R-Jack (ECSK2201U00)

4 CHEMICAL STORAGE TANKS

- Cables:**
- BX Series (BX002KWLSOP + BX006KSLA9YP)
- Connectivity:**
- Fiber Adapter Panel (6112MMDLC)
 - Fiber Pigtail (P6LC12-3M)
 - R-Jack (ECSK2201U00)
- Enclosures:**
- NEMA-4X Fiber Enclosures (OCO12NX or OCO12NXS)
 - DIN Rail Box (DTC-1AP)
 - ZDM Enclosure (ZDMB6B)
- Assemblies:**
- Cat 6 Patchcord (PCSIX03B06)
 - LC to LC Fiber Jumper (D5GLC-LC-3M)

5 MOTOR CONTROL CENTER/PUMPING STATIONS

- Cables:**
- BX Series (BX002KWLSOP + BX006KSLA9YP)
 - DX Series (DX012DWLST9KR)
- Connectivity:**
- R-Jack (ECSK2201U00)
- Enclosures:**
- NEMA-4X Fiber Enclosures (OCO12NX or OCO12NXS)
 - DIN Rail Box (DTC-1AP)
 - ZDM Enclosure (ZDMB6B)
- Assemblies:**
- Cat 6 Patchcord (PCSIX03B06)
 - LC to LC Fiber Jumper (D5GLC-LC-3M)

6 ADMINISTRATION OFFICE

- Cables:**
- BX Series (BX002KWLSOP + BX006KSLA9YP)
 - DX Series (DX006DALS9KR12)
- Connectivity:**
- Fiber Adapter Panel (6112MMDLC)
 - Fiber Pigtail (P6LC12-3M)
 - R-Jack (ECSK2201U00)
- Enclosures:**
- NEMA-4X Fiber Enclosures (OCO12NX or OCO12NXS)

WASTEWATER SOLUTIONS

- DIN Rail Box (DTC-1AP)**
- ZDM Enclosure (ZDMB6B)**
- Assemblies:**
- Cat 6 Patchcord (PCSIX03B06)
 - LC to LC Fiber Jumper (D5GLC-LC-3M)

7 ADMINISTRATION OFFICE

- Cables:**
- DX Series (DX024DLS9KR)
 - HC Series (HC048DSLACKR)
 - GX Series (GX096WSLA9YP)
- Connectivity:**
- Category 6 Jack (KMJA6)
 - Patch Panel (DCC4888/110SIX)
 - Field Terminable Plug (OCCUFP6A)

- Enclosures:**
- Rack (CMR45)
 - Cabinet (CC3807)
 - RTS Fiber Enclosure (RTS1U-3APB/RTC1U-3APB)
- Assemblies:**
- Cat 6 Patchcord (PCSIX03B06)
 - LC to LC Fiber Jumper (D5GLC-LC-3M)

8 MASTER CONTROL CENTER

- Cables:**
- HC Series (HC048DSLACKR)
 - GX Series (GX048KSLA9YP + GX096WSLA9YP)
- Connectivity:**
- Category 6 Jack (KMJA6)
 - Patch Panel (DCC4888/110SIX)
 - Field Terminable Plug (OCCUFP6A)
 - R-Jack (ECSK2201U00)
- Enclosures:**
- Rack (CMR45)
 - Cabinet (CC3807)
 - RTS Fiber Enclosure (RTS1U-3APB/RTC1U-3APB)
- Assemblies:**
- Cat 6 Patchcord (PCSIX03B06)
 - LC to LC Fiber Jumper (D5GLC-LC-3M)

CUSTOMER:
SACRAMENTO
REGIONAL WASTEWATER
PLANT (SRWTP)

THE CHALLENGE

To build the most reliable, high-speed, long-life, main-
tenance-free, fiber backbone with low cost of owner-
ship to support the EchoWater Project, Sacramento’s
largest-ever public works project and the largest single
block of financing ever issued by the EPA.

THE OCC SOLUTION

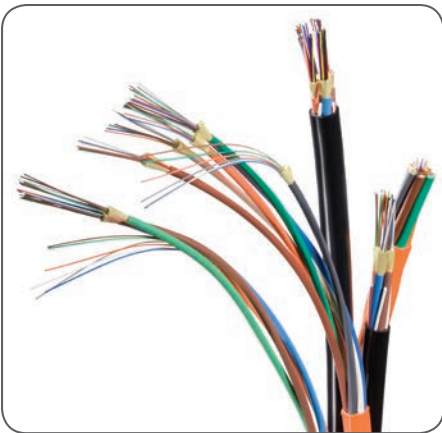
SRWTP installed OCC’s cabling and connectivity for the
industry’s highest crush resistance, elimination of congest-
ed conduit, and superior chemical and water resistance,
which created an ideal end-to-end wastewater solution.
OCC helped SRWTP to achieve optimum network trans-
mission reliability and low maintenance to keep their con-
trol processes up and running 24-7 with no downtime.

CLIENT ASSESSMENT

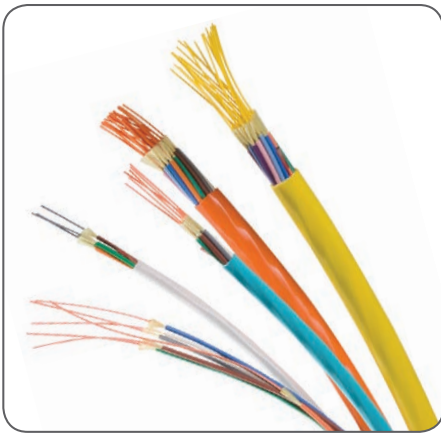
*“In 15 years of using OCC’s end-to-end cabling and
connectivity system, SRWTP has never experienced
even a moment of downtime and our control processes
keep on running with impeccable transmission perfor-
mance! We’re also very satisfied with OCC’s most reli-
able customer service, fast delivery of customized pre-
terminated connectivity solutions, and committed OCC
Certified Installers.”*

– Ronald Y Kwok, PE, MIET,
Associate Electrical Engineer

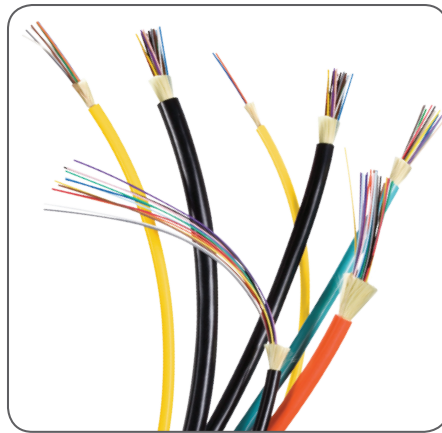
PRODUCT HIGHLIGHTS: CABLES



GX-Series Subgrouping Cables
(Used in Monitoring Areas, Administration Offices, Master Control Center) Used in trunking, LAN, and distribution applications where small-size, lightweight, and versatile installation capability are required for ducts, plenums, and air-handling spaces. Jacket highly chemical resistant for installation in harsh industrial environments.



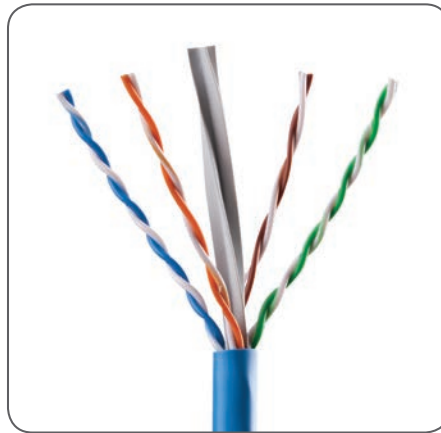
BX-Series Breakout Cables
(Used in Water Storage Tanks/Controls, Receiving Well, Motor Control Centers, Pumping Stations, Filtration Tanks) Ideal for installations requiring an extremely rugged and reliable cable design where maximum mechanical and environmental protection are required. Ideal configuration for a single termination point requiring multiple fibers.



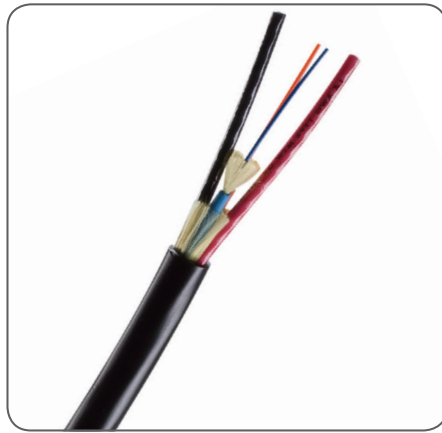
DX-Series Distribution Cables
(Used in Security Gates, Monitoring Areas, Motor Control Centers, Pumping Stations, Filtration Tanks, Administration Offices) Used in trunking, LAN, and distribution applications where small-size, lightweight, and versatile installation capability are required for ducts, plenums, and air-handling spaces.



HC-Series High Density Cables
(Used in Monitoring Areas, Administration Offices, Master Control Center) OCC's high-capacity cable bundles subgroups of 12 fibers into compact, flexible cables of up to 288 fibers. Ideal for permanent infrastructure where hundreds of fibers need to be run through small conduits.

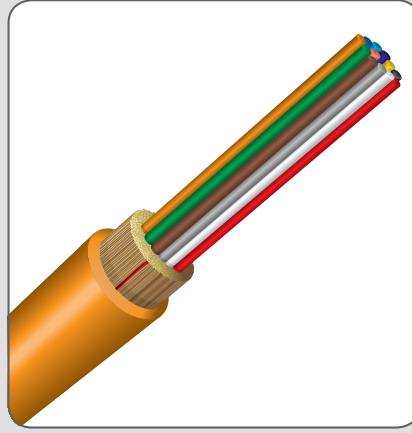


Category Copper Cables
(Used in Water Storage Tanks/Controls, Receiving Well, Motor Control Centers, Pumping Stations, Filtration Tanks, Administration Office, Master Control Center) With the surge of high-bandwidth and non-stop emerging technologies, OCC also offers a complete line of Cat 5e, Cat 6, and Cat 6A copper cable to allow the flexibility to design your network as you envision, and to solve your most challenging applications.



CX-Series Hybrid Cables
(Used in Security Gates and Monitoring Areas) Ideal for security applications, the CX Series cable is available for indoor and outdoor settings. This cable can provide power and data transfer solutions to ensure the security of your facility against intrusions, equipment failure, or other threats.

PRODUCT HIGHLIGHTS: CONNECTIVITY



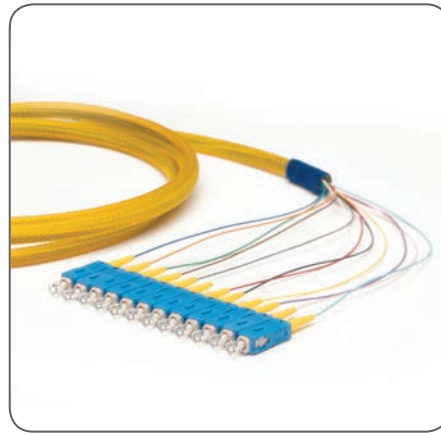
K-Jacket
OCC's Fluoropolymer Jacket was built to withstand severe chemical environments. Ideal to use in facilities that contain corrosive chemicals and gasses such as Bromine, Chlorine, Sulfur Dioxide, and Methane Gas.



L-Jack Connector
(Used in Security Gates and Monitoring Areas) A robust fiber optic duplex LC connector that couples the small form factor of traditional LCs with the known ruggedness of OCC harsh environment connectors.



Category 6 - Field Terminable Plug
(Used in Administration Office, Master Control Center) The dramatic growth of wireless access points and other IP-enabled devices, such as surveillance cameras and building automation devices, has created a demand for a field installable modular plug that is easy to terminate and meets Cat6A performance requirements.



Fiber Optic Pigtail
(Used in Water Storage Tanks/Controls, Receiving Well, Filtration Tanks) OCC's fiber optic pigtail assemblies are designed for reliability and performance. They combine high-precision zirconia ferrules and rugged composite hardware to provide the optical performance, durability, and repeatability necessary for today's network applications.



Category 6 - KMJ Jacks
(Used in Administration Office, Master Control Center) OCC's KMJ jacks offer printed circuit board technology that provides best-in-class Category 6 component performance. With standard 110-style terminations, OCC's Category 6 KMJ jacks are ETL verified to TIA 568-C.2 Category 6 specifications.



R-Jack/RJ45 Ethernet Connector
OCC's R-Jack is designed for harsh environment protection for your copper connectivity. 100 percent transversely sealed (IP-68) protects against moisture, dust, and other contaminants. Provides an affordable solution for Ethernet connectivity in harsh and environmentally challenging applications. R-Jack provides a variety of options, including pre-kitted solutions that are designed to integrate seamlessly with industrial applications.



MTP/MPO to LC Cassettes
Designed for speed and effortless installation, OCC's fiber optic cassette modules are available with many adapter choices and offer customers a dependable, performance-driven solution. These cassettes provide significant installation savings with no field terminations required. Simply plug and play!



Fiber Optic Adapter Panels
All OCC fiber adapter plates guarantee performance parameters for the application specified, and can be preloaded into OCC fiber cabinets for easy plug-and-play operability. Available in 6-, 8-, 12-, and 24-port fiber configurations. Options available include ST, SC, FC, MT-RJ, LC, and others. Composite, metal, or ceramic sleeve options.



Category 6 - Patch Panels
(Used in Administration Offices, Master Control Centers) OCC's patch panels are ideal for end users who are looking for superior network performance to keep their infrastructure lasting well into the future. Constructed of extruded aircraft-grade aluminum for durability.



Freestanding Cabinets
(Used in Administration Offices, Master Control Centers) With OCC's complete line of free-standing cabinets, customers can provide seamless, up-scale integration for any size network installation. This cabinet line offers a broad variety of solutions to fit any system application and the finest quality workmanship with the flexibility to meet any infrastructure demand.

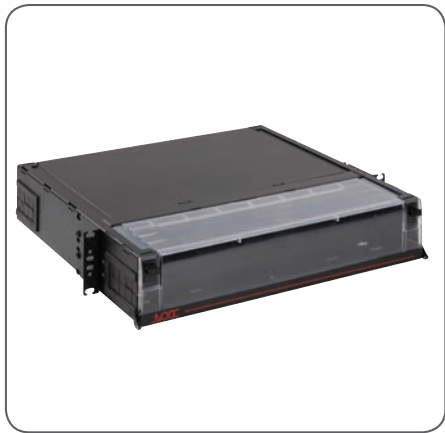


DIN Rail Enclosures
(Used in Water Storage Tanks/Controls, Receiving Well, Motor Control Centers, Pumping Stations, Filtration Tanks) OCC's line of DIN Rail fiber optic and copper enclosures offer a rugged and versatile product line ideal for secure terminations within industrial settings. Utilizing OCC's existing 600 series adapter plates, the DTC product family is based on offering versatility and ease of installation.



NEMA 3X and 4X Enclosures
(Used in Water Storage Tanks/Controls, Receiving Well, Security Gates and Monitoring Areas, Motor Control Centers, Pumping Stations, Filtration Tanks) OCC's corrosion resistant enclosures are designed to protect fiber optic network components against harsh environments. These cabinets are indoor/outdoor rated and constructed of strong molded fiberglass-reinforced polyester material. Well suited for high and low temperatures.

PRODUCT HIGHLIGHTS: ENCLOSURES



RTC/RTS Enclosures
(Used in Administrative Offices, Master Control Center) Our line of fiber optic enclosures allow for easier termination, greater capacity, and uncomplicated cable management. All OCC fiber optic enclosures can be ordered pre-assembled with pigtails and adapter panels.

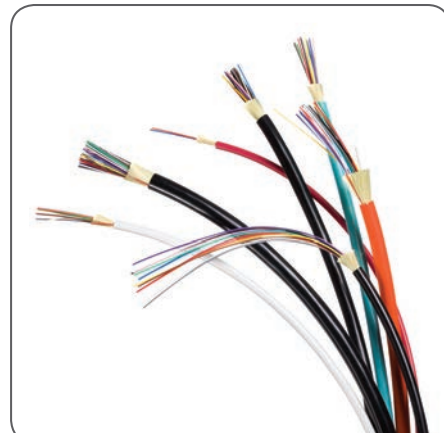


ZDM Box-Zone Distribution Enclosure
(Used in Water Storage Tanks/Controls, Receiving Well, Motor Control Centers, Pumping Stations, Filtration Tanks) OCC's Zone Distribution Enclosure is a compact and reliable patch and splice enclosure ideal for indoor wall-mount applications.



Open-Frame Rack
(Used in Administrative Offices, Master Control Center) When it comes to standard EIA-compliant aluminum open-frame relay racks, OCC offers top-of-the-line relay racks that feature a variety of heights to meet any cabling infrastructure needs. Ideal for equipment rooms and telecommunications closets, our open-frame rack is an excellent foundation to build a network system.

PRODUCT HIGHLIGHTS: ASSEMBLIES



Pre-terminated Trunk Cables
OCC offers pre-terminated trunk cables that are ideal for backbone applications. OCC's trunk cables can be ordered with a variety of termination and performance configurations.



LC to LC Fiber Jumpers
(Used in Water Storage Tanks/Controls, Receiving Well, Security Gates and Monitoring Areas, Motor Control Centers, Pumping Stations, Filtration Tanks, Administration Offices, Master Control Centers) Get exactly the jumper you need to make the transition from cross-connect point to the electronics.



Category 6 Patch Cords
(Used in Water Storage Tanks/Controls, Receiving Well, Security Gates and Monitoring Areas, Motor Control Centers, Pumping Stations, Filtration Tanks, Administration Offices, Master Control Centers) OCC created modular cords with guaranteed compliance that offer superior PSANEXT performance suitable for mitigation of alien crosstalk.

TECHNICAL AND DESIGN-BUILD EXPERTISE

Instead of relying on OCC just for products, more and more of our customers rely on our design-build expertise. Our design engineers and technical staff provide unprecedented service, support, and assistance.

ONE-STOP SHOP

Since we provide one of the largest network solutions portfolios in the industry, many of our customers rely on OCC as their one-source solutions provider from the most reliable end-to-end cabling and connectivity systems down to the shortest patch cable. We can meet your every network need.

CUSTOMER-DERIVED INNOVATIONS

We partner with you, our customer, and listen to your needs. Thanks to our customers, we’ve designed, innovated, and customized some of the best solutions in the industry for the speed, immediate scalability, space savings, and ultra-high performance demanded by zero downtime networks of all sizes.

COMPETITIVE WARRANTY PROGRAMS

OCC, in conjunction with certified Multimedia Design and Integration Specialist (MDIS) installers around the world, is able to offer various competitive warranty and extended warranty programs. OCC has developed warranty plans that offer a flexible approach to a lasting network installation.

QUICK SHIPPING

FAST
AS
FIBER



24^{HR}
QUICK
TURNAROUND

SAME DAY SHIPPING
ON IN-STOCK ITEMS IF ORDERED BY 12PM, EST.





Connections You Can Count On.™

GLOBAL PARTNERS & LOCATIONS



OCC ROANOKE, VA

Corporate Headquarters and Fiber
Optic Cable Manufacturing Facility

5290 Concourse Drive
Roanoke, VA 24019 USA
540.265.0690 or 800.622.7711

OCC DALLAS, TX

Harsh Environment and Specialty
Connectivity Manufacturing Facility

1700 Capital Avenue, Suite 150
Plano, TX 75074 USA
972.509.1500 or 877.509.1500

OCC ASHEVILLE, NC

Enterprise Connectivity
Manufacturing Facility

33 Superior Way
Swannanoa, NC 28778 USA
828.298.2260 or 800.880.7674

JOIN OUR SOCIAL NETWORK

For the most up-to-date information on all of OCC's products, news and information, visit our website at occfiber.com. Registered users get added benefits, access to additional information, white papers, and more.



Like us on Facebook:
facebook.com/OCCSolutions



Follow us on Twitter:
twitter.com/occsolutions



Watch us on YouTube:
youtube.com/user/occsolutions



Follow us on Linked In:
linkedin.com/groups/optical-cable-corporation