

SPECIFICATIONS

FEATURES/MATERIALS:

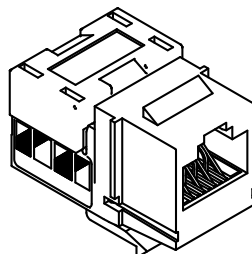
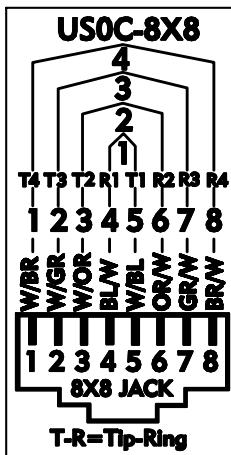
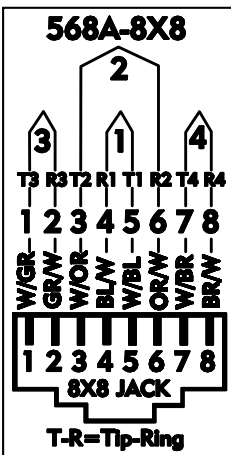
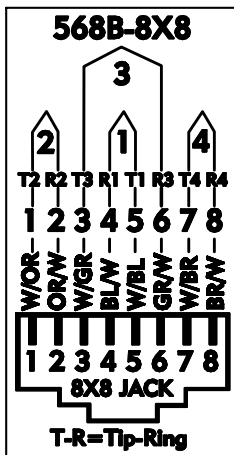
- PLASTIC HOUSING FLAME RETARDANT, UL 94 V-0
- 110 STYLE IDC CONNECTORS: 200 MICRO-INCH TIN LEAD 60/ 40 PLATED OVER PHOSPHORUS BRONZE.
- IDC CONTACTS MEET DURABILITY REQUIREMENTS OF TIA 568 WITH 22-26 AWG SOLID CONDUCTORS.
- MAXIMUM INSULATION DIAMETER .045"
- CONTACTS: BERYLLIUM COPPER WITH A MINIMUM OF 50 MICRO-INCHES OF GOLD PLATING OVER NICKEL.
- SUPPORTS VOICE.
- SUPPORTS 10 BASE-T ETHERNET.
- SUPPORTS ALL OTHER APPLICATIONS DEVELOPED FOR OPERATION OVER CATEGORY 3.

"XX" IN P/N DENOTES COLOR CODE:

00 ELEC. IVORY	06 GRAY
01 OFFICE WHITE	07 WHITE
02 BLACK	08 ORANGE
03 RED	09 YELLOW
04 GREEN	10 PURPLE
05 BLUE	11 BROWN

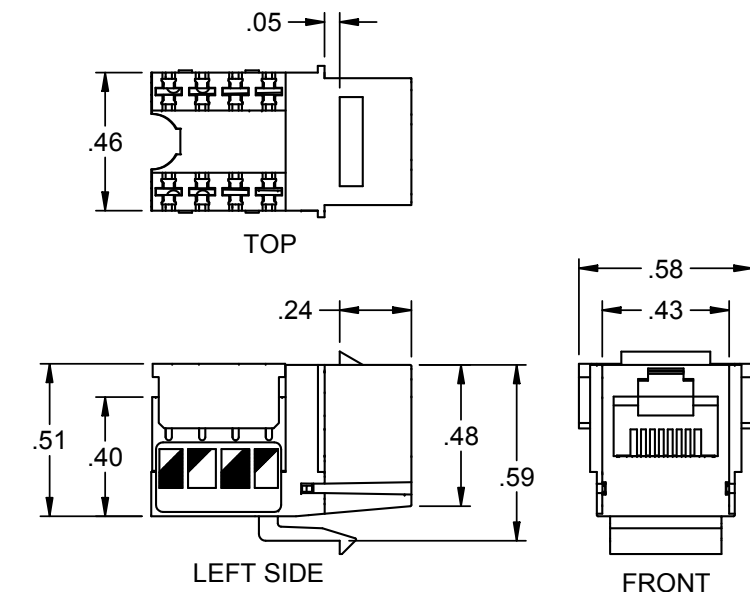
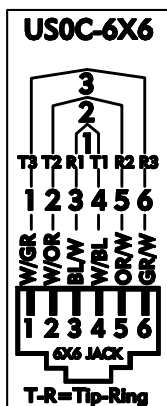
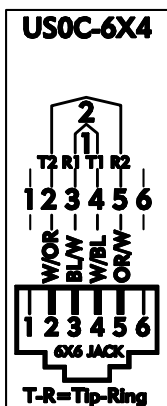
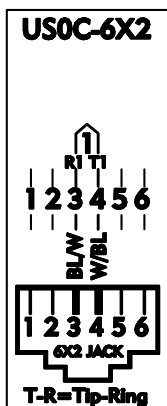
RoHS COMPLIANT

8 Position Modular Jack



ISOMETRIC VIEW

6 Position Modular Jack



KMJL8A/B01	KMJ, CAT 3, LEADFRAME, UNIV
KMJL06UXX	KMJ, CAT 3, USOC, 6 POS, "COLOR", OCC
OCC PART NO.	DESCRIPTION

UNCONTROLLED COPY

UNLESS OTHERWISE SPECIFIED
DIMENSIONS ARE IN INCHES.
TOLERANCES: FRACTIONS $\pm 1/32$ "
ANGLES $\pm 1/2^\circ$
3 PLACE DECIMALS $\pm .005$ "
2 PLACE DECIMALS $\pm .01$ "

THIRD
ANGLE
PROJECTION

CRITICAL DIMENSION CODE
(F) = FUNCTION
(M) = MATING
(A) = AUDIT

MATERIAL
SEE BILL OF MATERIAL

FINISH
SEE NOTES

THIS DRAWING AND THE DESIGN SHOWN ARE THE
PROPERTY OF OPTICAL CABLE CORPORATION AND
MAY NOT BE USED AS THE BASIS FOR MANUFACTURE
OR SALE WITHOUT SPECIFIC WRITTEN PERMISSION
OF OPTICAL CABLE CORPORATION.

DRAWN	D.A.HOLBERT	DATE	7/30/01
CHECKED	J.HOWE	DATE	11/15/01
ENGINEER	J.YANIK	DATE	7/30/01
APPROVED	CALLOWAY	DATE	3/5/20
PREVIOUS DWG			
NEXT DWG	FILENAME	C102753F.dft	



5290 Concourse Drive
Roanoke, VA 24019
Phone: 800-622-7711
Fax: 540-265-0724
www.occfiber.com

DWG TITLE
**CUSTOMER DRAWING,
JACK, KMJ, LEADFRAME,
CATEGORY 3, VOICE GRADE**

SIZE B	DWG NO. C102753	REV F
SCALE:	1.5:1	SHEET 1 OF 1