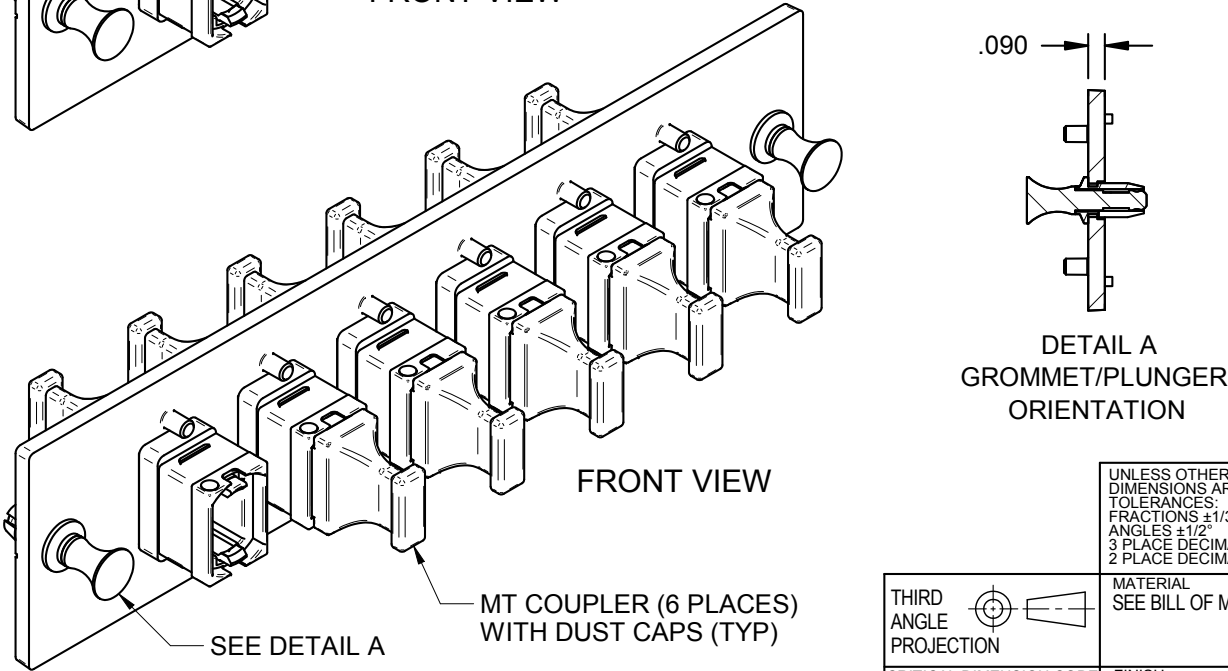
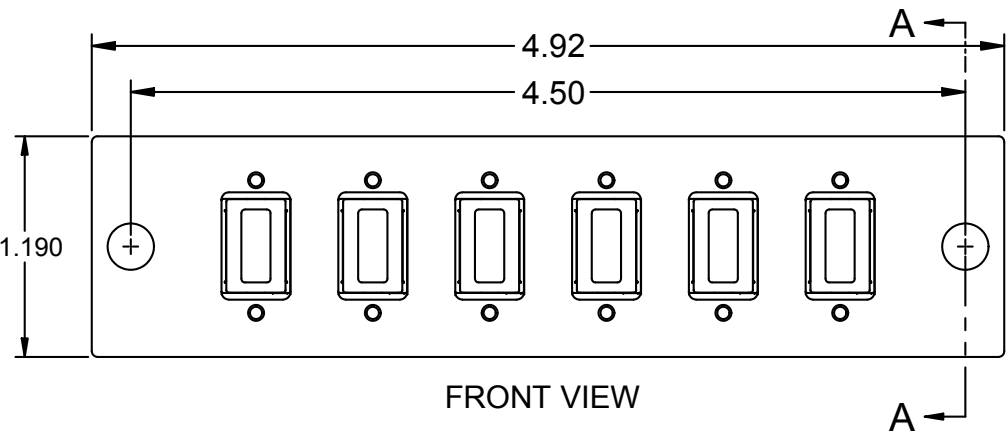
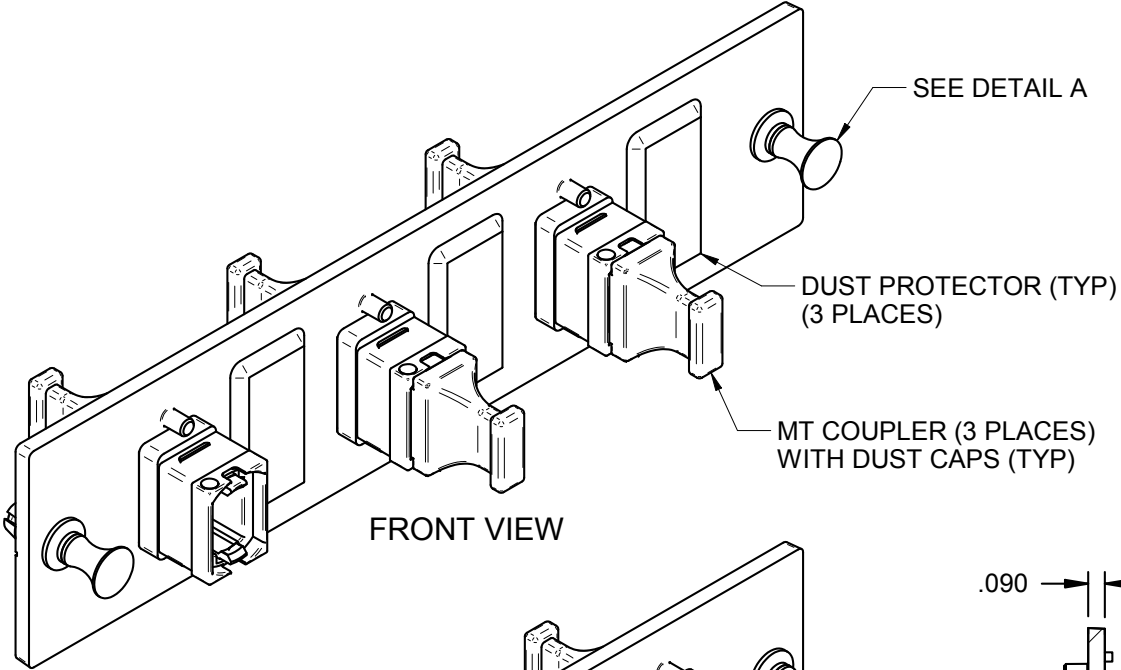
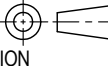



NOTES: UNLESS OTHERWISE SPECIFIED.  
1. EACH ADAPTER PLATE ASSEMBLY IS SUPPLIED WITH COMPONENTS SHOWN.

"OPTICAL CABLE CORPORATION (OCC)  
RESERVES THE RIGHT TO REVISE ANY  
AND ALL DESIGN SPECIFICATIONS."  
**UNCONTROLLED COPY**



616MMMT50G	ADAPTER PLATE ASSY, MT X 6, OM3/OM4, 6 PORT, OCC	AQUA
616MMMT	ADAPTER PLATE ASSY, MT X 6, MM, 6 PORT, OCC	BLACK
616SMMT	ADAPTER PLATE ASSY, MT X 6, SM, 6 PORT, OCC	GREEN
313MMMT	ADAPTER PLATE ASSY, MT X 3, MM, 3 PORT, OCC	BLACK
313SMMT	ADAPTER PLATE ASSY, MT X 3, SM, 3 PORT, OCC	GREEN
OCC PART NO.	DESCRIPTION	MT COLOR

<div>THIRD ANGLE PROJECTION</div> 		UNLESS OTHERWISE SPECIFIED DIMENSIONS ARE IN INCHES TOLERANCES: FRACTIONS ±1/32" ANGLES ±1/2° 3 PLACE DECIMALS ±.015" 2 PLACE DECIMALS ±.03"		THIS DRAWING AND THE DESIGN SHOWN ARE THE PROPERTY OF OPTICAL CABLE CORPORATION AND MAY NOT BE USED AS THE BASIS FOR MANUFACTURE OR SALE WITHOUT SPECIFIC WRITTEN PERMISSION OF OPTICAL CABLE CORPORATION.		 <div>OPTICAL CABLE CORPORATION</div> <div>33 Superior Way Swannanoa, NC 28778 Phone: 828-298-2260 Fax: 828-298-2487 www.occfiber.com</div>		
		DRAWN D.A.HOLBERT	DATE 1/22/04					
<div>CRITICAL DIMENSION CODE</div> <div>(F) = FUNCTION</div> <div>(M) = MATING</div> <div>(A) = AUDIT</div>		MATERIAL SEE BILL OF MATERIAL		CHECKED J.HOWE	DATE 1/23/04	DWG TITLE ADAPTER PLATE ASSY, 3&6 PORT, MT COUPLER, SM/MM		
		FINISH SEE NOTES		ENGINEER J.YANIK	DATE 1/22/04			
				APPROVED D.INGLE	DATE 3/6/20	SIZE B	DWG NO. C106545	REV F
				PREVIOUS DWG				
		NEXT DWG	FILENAME C106545F.dft	SCALE: NONE	SHEET 1 OF 1			