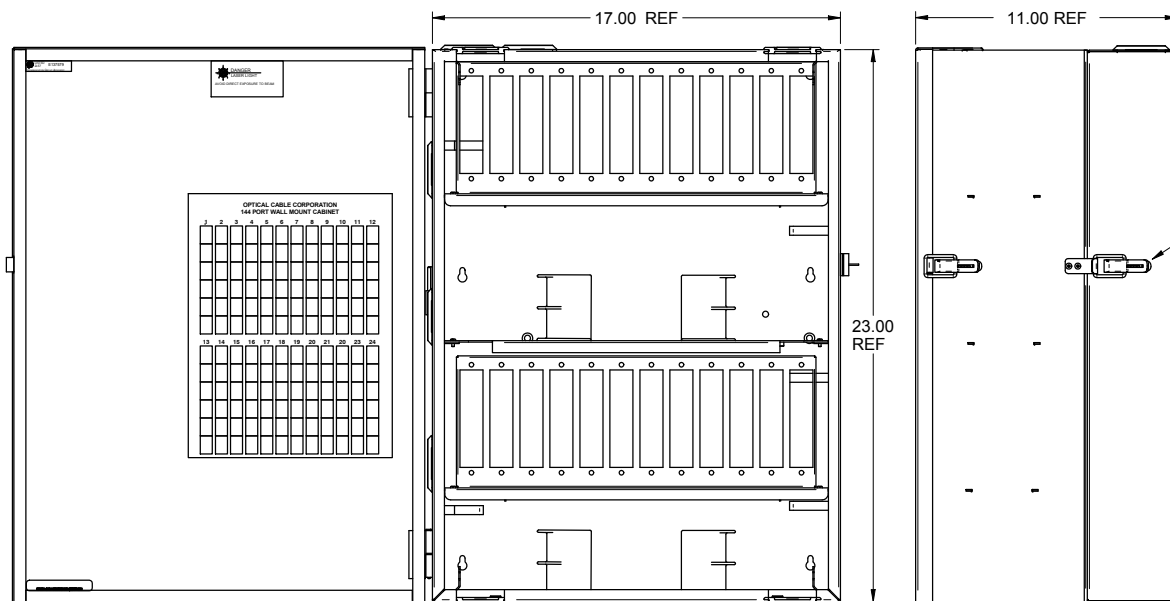


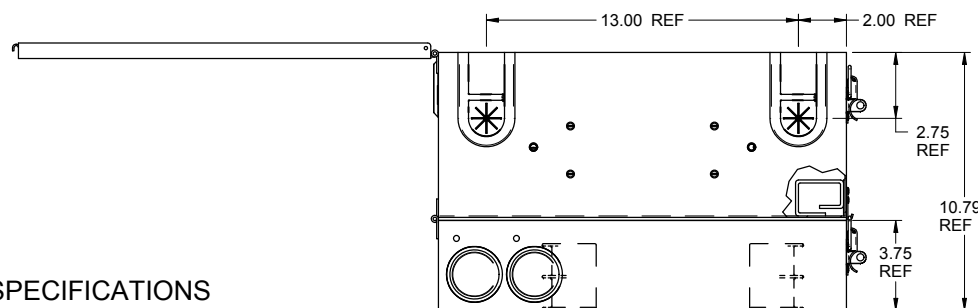
"OPTICAL CABLE CORPORATION (OCC)
RESERVES THE RIGHT TO REVISE ANY
AND ALL DESIGN SPECIFICATIONS."

UNCONTROLLED COPY

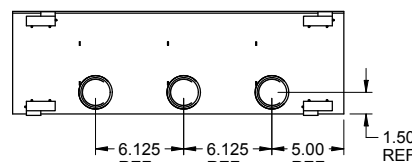


FRONT VIEW

RIGHT SIDE



BOTTOM VIEW



LEFT SIDE VIEW

WTC144
OUTER DOOR

(QTY 2) LOCKABLE LATCH
PADLOCKS (OPTIONAL)

CABLE HOLDER HOOP (QTY 6)
SCREW #8-32 (QTY 12)
NUT #8-32 (QTY 12)

GROMMET, ROUND
(4 PLACES)

WTC144
SPlicing
COMPARTMENT

GROMMET, LARGE
(4 PLACES)

WTC144
CABINET BASE

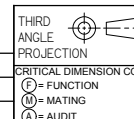
COMPLETED
ASSEMBLY
OPENED VIEW
WTC144B

SPECIFICATIONS

FEATURES & BENEFITS:

- OPTICAL CABLE CORPORATION (WTC SERIES) WTC144 WALL MOUNT FIBER OPTIC CROSS CONNECT CABINETS PROVIDE FIBER MANAGEMENT, CONNECTIVITY AND DISTRIBUTION FOR 6 TO 144 FIBERS. WTC144 ACCOMMODATES ALL CROSS CONNECT FUNCTIONS (SPlicing, TERMINATION, AND INTERCONNECTION) FOR OUTSIDE PLANT, BACKBONE, AND BUILDING CABLES.
- WTC144 CABINETS CAN BE ORDERED EMPTY, LOADED, OR CUSTOM CONFIGURED TO YOUR PARTICULAR SPECIFICATIONS. ACCOMMODATES 600 SERIES ADAPTER PLATES.
- INNOVATIVE FIBER MANAGEMENT SYSTEM USES TWO TIER FIBER STORAGE HOOPS DESIGNED TO MAINTAIN ORDERLY FIBER MANAGEMENT. INTEGRAL STRAIN RELIEF BARS AND FLEXIBLE GROMMETS PROVIDE RELIABLE CABLE PROTECTION AT ALL CABLE ENTRANCES AND EXITS.
- RUGGED 16-GAUGE STEEL CONSTRUCTION WITH A DURABLE POWDER COAT FINISH.
WTC144 CABINET COLOR: B = BLACK
- HINGED OUTER DOORS PROVIDE LOCKABLE LATCH EXTERIOR WITH EASY FRONT ACCESS DURING INSTALLATION AND MAINTENANCE.
(DUAL PADLOCK OPTION AVAILABLE)
- ALL PLASTIC COMPONENTS ARE HIGH IMPACT SELF-EXTINGUISHING, UL LISTED RATING 94V-0
- WTC144 CABINETS ARE DESIGNED TO MEET NEMA 12

WTC144BL	ASSY, CABINET, WALL MOUNT, 144 PORT, with 2 PADLOCKS, BLACK, OCC
WTC144B	ASSY, CABINET, WALL MOUNT, 144 PORT, BLACK, OCC
OCC PART NUMBER	DESCRIPTION



UNLESS OTHERWISE SPECIFIED
DIMENSIONS ARE IN INCHES.
TOLERANCES: FRACTIONS $\pm 1/32$
ANGLES $\pm 1/2^\circ$
3 PLACE DECIMALS $\pm .005$
2 PLACE DECIMALS $\pm .01$

MATERIAL
VARIOUS
SEE BILL OF MATERIAL

FINISH
SEE NOTES

THIS DRAWING AND THE DESIGN SHOWN ARE THE
PROPERTY OF OPTICAL CABLE CORPORATION AND
MAY NOT BE USED AS THE BASIS FOR MANUFACTURE
OR SALE WITHOUT SPECIFIC WRITTEN PERMISSION
OF OPTICAL CABLE CORPORATION.

DRAWN D.A.HOLBERT
CHECKED J.HOWE
ENGINEER J.YANIK
APPROVED D.INGLE

PREVIOUS DWG
NEXT DWG

DATE 1/29/96
DATE 10/10/01
DATE 1/29/96
DATE 9/13/18



33 Superior Way
Swannanoa, NC 28778
Phone: 828-298-2260
Fax: 828-298-2487
www.occfiber.com

DWG TITLE
ASSEMBLY, CABINET, OCC,
144PORT, WALL MOUNT, WTC144

SIZE C DWG NO. C101420 REV M

SCALE: NONE SHEET 1 OF 1