



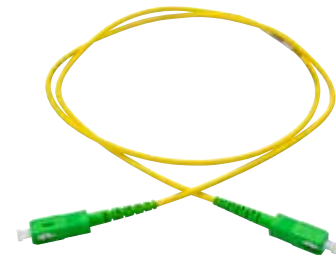
PASSIVE OPTICAL LAN LINE CARD

JUMPERS, CABLES AND CONNECTORS

FIBER OPTIC JUMPERS

DESCRIPTION	OCC PART #
SC/APC-SC/APC, Simplex 2.9mm Jumper, Riser (xx = Length in Feet)	S8SCAPC-SCAPC-XXXF
SC/UPC-SC/APC, Simplex 2.9mm Jumper, Riser (xx= length in Feet)	S8SCAPC-SCUPC-XXXF
SC/APC-SC/APC, Simplex 2.9mm Jumper, Plenum (xx = Length in Feet)	S8PSCAPC-SCAPC-XXXF
SC/UPC-SC/APC, Simplex 2.9mm Jumper, Plenum (xx= Length in Feet)	S8PSCAPC-SCUPC-XXXF

*Note: Add PK to the end of the part number for a pulling eye (xxx = length in feet)



PRE-TERMINATED 1-FIBER STATION CABLES

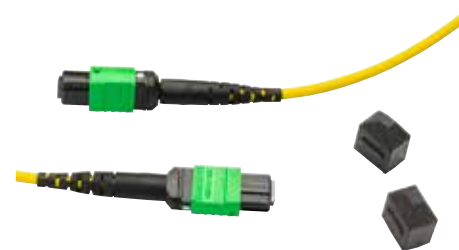
DESCRIPTION	OCC PART #
Pre-Terminated SC/APC - SC/APC 2.9mm Station Cables, Plenum	S8PSCAPC-SCAPC-XXXF
Pre-Terminated SC/APC - SC/APC 2.9mm Station Cables, Riser	S8SCAPC-SCAPC-XXXF

* Note: add PK to the end of the part number for a pulling eye (xxx = length in feet)

PRE-TERMINATED MPO-TO-MPO 12-FIBER TRUNK CABLES

DESCRIPTION	OCC PART #
MT-to-MT, 12-Fiber Assembly, Plenum	MT12PRF8TK-xxx
MT-to-MT, 12-Fiber Assembly, Riser	MT12RF8TK-xxx

* Note: add PK to the end of the part number for a pulling eye (xxx = length in feet)



BULK COMPOSITE FIBER/COPPER INDOOR STATION CABLES (PLENUM)

DESCRIPTION	OCC PART #
Slimline Plenum Hybrid Cables, 1-900um Fiber & 16/2 AWG	CA003SPDA9YP
Slimline Plenum Hybrid Cables, 1-900um Fiber & 18/2 AWG	CA003SPCA9YP
Slimline Plenum Hybrid Cables, 1-900um Fiber & 20/2 AWG	CA003SPBA9YP
Slimline Plenum Hybrid Cables, 2-900um Fibers & 16/2 AWG	CA004SPDA9YP
Slimline Plenum Hybrid Cables, 2-900um Fibers & 18/2 AWG	CA004SPCA9YP
Slimline Plenum Hybrid Cables, 2-900um Fibers & 20/2 AWG	CA004SPBA9YP
Slimline Plenum Hybrid Cables, 1-2mm Fiber & 16/2 AWG	CE003SPDA9YP
Slimline Plenum Hybrid Cables, 1-2mm Fiber & 18/2 AWG	CE003SPCA9YP
Slimline Plenum Hybrid Cables, 1-2mm Fiber & 20/2 AWG	CE003SPBA9YP
Slimline Plenum Hybrid Cables, 2-2mm Fibers & 16/2 AWG	CE004SPDA9YP
Slimline Plenum Hybrid Cables, 2-2mm Fibers & 18/2 AWG	CE004SPCA9YP
Slimline Plenum Hybrid Cables, 2-2mm Fibers & 20/2 AWG	CE004SPBA9YP

Note: add PK to the end of the part number for a pulling eye (xxx = length in feet)



JUMPERS, CABLES AND CONNECTORS

BULK COMPOSITE FIBER/COPPER INDOOR/OUTDOOR PLTC STATION CABLES (RISER)

DESCRIPTION	OCC PART #
Slimline Riser Indoor/Outdoor PLTC Hybrid Cables, 1-900um Fiber & 12/2 AWG	CA003DPFA9YR
Slimline Riser Indoor/Outdoor PLTC Hybrid Cables, 1-900um Fiber & 14/2 AWG	CA003DPEA9YR
Slimline Riser Indoor/Outdoor PLTC Hybrid Cables, 1-900um Fiber & 16/2 AWG	CA003DPDA9YR
Slimline Riser Indoor/Outdoor PLTC Hybrid Cables, 1-900um Fiber & 18/2 AWG	CA003DPCA9YR
Slimline Riser Indoor/Outdoor PLTC Hybrid Cables, 1-900um Fiber & 20/2 AWG	CA003DPBA9YR
Slimline Riser Indoor/Outdoor PLTC Hybrid Cables, 2-900um Fibers & 12/2 AWG	CA004DPFA9YR
Slimline Riser Indoor/Outdoor PLTC Hybrid Cables, 2-900um Fibers & 14/2 AWG	CA004DPEA9YR
Slimline Riser Indoor/Outdoor PLTC Hybrid Cables, 2-900um Fibers & 16/2 AWG	CA004DPDA9YR
Slimline Riser Indoor/Outdoor PLTC Hybrid Cables, 2-900um Fibers & 18/2 AWG	CA004DPCA9YR
Slimline Riser Indoor/Outdoor PLTC Hybrid Cables, 2-900um Fibers & 20/2 AWG	CA004DPBA9YR
Slimline Riser Indoor/Outdoor PLTC Hybrid Cables, 1-2mm Fiber & 12/2 AWG	CE003DPFA9YR
Slimline Riser Indoor/Outdoor PLTC Hybrid Cables, 1-2mm Fiber & 14/2 AWG	CE003DPEA9YR
Slimline Riser Indoor/Outdoor PLTC Hybrid Cables, 1-2mm Fiber & 16/2 AWG	CE003DPDA9YR
Slimline Riser Indoor/Outdoor PLTC Hybrid Cables, 1-2mm Fiber & 18/2 AWG	CE003DPCA9YR
Slimline Riser Indoor/Outdoor PLTC Hybrid Cables, 1-2mm Fiber & 20/2 AWG	CE003DPBA9YR
Slimline Riser Indoor/Outdoor PLTC Hybrid Cables, 2-2mm Fibers & 12/2 AWG	CE004DPFA9YR
Slimline Riser Indoor/Outdoor PLTC Hybrid Cables, 2-2mm Fibers & 14/2 AWG	CE004DPEA9YR
Slimline Riser Indoor/Outdoor PLTC Hybrid Cables, 2-2mm Fibers & 16/2 AWG	CE004DPDA9YR
Slimline Riser Indoor/Outdoor PLTC Hybrid Cables, 2-2mm Fibers & 18/2 AWG	CE004DPCA9YR
Slimline Riser Indoor/Outdoor PLTC Hybrid Cables, 2-2mm Fibers & 20/2 AWG	CE004DPBA9YR

A-SERIES ASSEMBLY CABLES

DESCRIPTION	OCC PART #
Simplex Bulk Station Cable, Single-Mode, 2.9mm, Plenum	AX001SSLA9YP
Simplex Bulk Station Cable, Single-Mode, 2.9mm, Riser	AX001DSLA9YR

SC XPRESS ULTRA™ FIBER CONNECTORS

DESCRIPTION	OCC PART #
Fiber Connector, Pre-Polished, SC/APC, 2/3mm	RFC-SCAPC-2/3MM
Fiber Connector, Pre-Polished, SC/APC, 250/900	RFC-SCAPC

STACKABLE SPLITTER CASSETTE BRACKET

DESCRIPTION	OCC PART #
Stackable Splitter Cassette Bracket (To Mount the Splitter in the Back of the Enclosure)	PONSCB1U

PASSIVE OPTICAL NETWORK SPLITTERS

DESCRIPTION	OCC PART #
1x8 PON Splitter w/2mm Pigtailed	PONC1X8SCAPC2
2x8 PON Splitter w/2mm Pigtailed	PONC2X8SCAPC2
1x16 PON Splitter w/2mm Pigtailed	PONC1X16SCAPC2
2X16 PON Splitter w/2mm Pigtailed	PONC2X16SCAPC2
1x32 PON Splitter w/2mm Pigtailed	PONC1X32SCAPC2
2X32 PON Splitter w/2mm Pigtailed	PONC2X32SCAPC2

* Note: Other configuration options available upon request



COMMERCIAL PASSIVE OPTICAL LAN

OCC WORK AREA & EQUIPMENT

STATION FACEPLATES & INSERTS

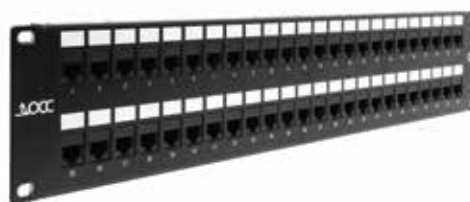
DESCRIPTION	OCC PART #
Faceplate Kit w/ SC Shuttered Insert, 1-Port, Bright White	FPSK01ASCAS12
Fiber Service Outlet Box, 2-Port, Surface Mount	SMEK2FS012
Faceplate, 1-Port, Angled	FPSK01Axx
Faceplate, 2-Port, Angled	FPSK02Axx
SC/APC Insert	AKSCAPCxx
SC/APC Shuttered Green Insert	AKSCAPCS04
Duplex LC/APC Insert	AKDLCAFS0xx
DC Power Pass-Thru Insert, 1-Circuit	AKDCPT12

*Note: xx=Color; 00=Electrical Ivory; 12=Bright White



COPPER PATCH PANELS & JACKS

DESCRIPTION	OCC PART #
KMJ, Category 6A Jacks, Unshielded	K6Axx
Category 6 Jack, Unshielded	KMJA6xx
Category 6, 1RU 24-Port Patch Panel	DCC2488/110SIX
Category 6, 2RU 48-Port Patch Panel	DCC4888/110SIX
Category 6A, 1 RU 24-Port Patch Panel	DCC2488/1106AN
Category 6A, 2RU 48-Port Patch Panel	DCC4888/1106AN
Category 6A, Field Terminable Plug, Unshielded	OCCUFP6A
Category 6A, Field Terminable Plug, Shielded	OCCSFP6A



COMMERCIAL FACEPLATES

DESCRIPTION	OCC PART #
1-Port Commercial Faceplate	FPSK01xx
2-Port Commercial Faceplate	FPSK02xx
3-Port Commercial Faceplate	FPSK03xx
4-Port Commercial Faceplate	FPSK04xx
6-Port Commercial Faceplate	FPSK06xx

RESIDENTIAL FACEPLATES

DESCRIPTION	OCC PART #
1-Port Residential Faceplate (No ID window)	FPKS01xx
2-Port Residential Faceplate (No ID window)	FPKS02xx
3-Port Residential Faceplate (No ID window)	FPKS03xx
4-Port Residential Faceplate (No ID window)	FPKS04xx
6-Port Residential Faceplate (No ID window)	FPKS06xx



CATEGORY CABLES & PATCH CORDS

DESCRIPTION	OCC PART #
Category 6, Riser Cable, 1000 ft	OCC-UE64R-xx
Category 6, Plenum Cable, 1000 ft	OCC-UE64PLM-xx
Category 6 High-Performance, Riser Cable, 1000 ft	OCC-U64HR-XX
Category 6 High-Performance, Plenum Cable, 1000 ft	OCC-U64HPLM-XX
Category 6A, Riser Cable, 1000 ft	OCC-U6A4R-xx
Category 6A, Plenum Cable, 1000 ft	OCC-U6A4PLM-xx
UTP, Category 6 Patch Cord with Boot, 3ft	PCSIX03Byy
UTP, Category 6 Patch Cord with Boot, 6ft	PCSIX06Byy
UTP, Category 6A Patch Cord with Boot, 3ft	PC6AU-B-03yy
UTP, Category 6A Patch Cord with Boot, 6ft	PC6AU-B-06yy
Shielded, Category 6A 28 AWG Mini Patch Cord with Boot	PC6ASM03Byy

Category Cable Colors: *xx=COLOR: 01=Yellow; 02=Black; 03=Red; 04=Green; 05=Blue; 06=Gray; 07=White; 08=Violet; 09=Orange

Patch Cord Colors: yy=COLOR: 01=Yellow; 02=Black; 03=Red; 04=Green; 05=Blue; 06=Gray; 07=White; 08=Orange; 09=Brown; 10=Purple



ENCLOSURES, ADAPTER PLATES & INSERTS

STANDARD ENCLOSURES & ADAPTER PLATES

ADAPTER PLATES & CASSETTES

DESCRIPTION	OCC PART #
12-Port SC/APC Adapter Plate	6112SMDSCAPC
Blank Adapter Plate	600
12-Port SC/APC MPO Cassette	PONCMT12SCAPC2
DC Pass-Thru Adapter Plate, 6-Circuit	6112DCPASS



WALL MOUNT ENCLOSURES

DESCRIPTION	OCC PART #
Mini Wall Enclosure, Holds 1 Adapter Plate or 1 MPO Cassette	ZDMBC1AP
Wall Mount POL Enclosure, Holds 6 Adapter Plates & Up to 2 Splitters	WTC6APBD
Wall Mount POL Enclosure, Holds 12 Adapter Plates & Up to 4 Splitters	WTC12APBD

*Note: Adapter Plates/Splitters sold separately.



RACK MOUNT & CEILING ENCLOSURES

DESCRIPTION	OCC PART #
1U Rack Mount Enclosure, Holds 3 Adapter Plates & Up to 1 Splitter	RTS1U-3APB
2U Rack Mount Enclosure, Holds 6 Adapter Plates & Up to 2 Splitters	RTS2U-6APB
4U Rack Mount Enclosure, Holds 12 Adapter Plates & Up to 4 Splitters	RTS4U-12APB
Zone Ceiling Enclosure, 2'h x 2'w x 3.5'd, Accommodates 1 Splitter & 4 Adapter Plates	ZES6AP
Zone Ceiling Enclosure, 2'h x 2'w x 7'd, Accommodates 3 Splitters & 9 Adapter Plates	ZED12AP
Trim Kit for Zone Ceiling Enclosure	ZETRIMKIT



HIGH-DENSITY (HD) ENCLOSURES & ADAPTER PLATES

ADAPTER PLATES

DESCRIPTION	OCC PART #
12-Port SC/APC HD Adapter Plate	6112SMDSCAPCHD
Blank HD Adapter Plate	600HD



WALL MOUNT ENCLOSURES

DESCRIPTION	OCC PART #
Wall Mount POL Enclosure, Holds 8 HD Adapter Plates & Up to 3 Splitters	WTC8HDAPBD
Wall Mount POL Enclosure, Holds 16 HD Adapter Plates & Up to 6 Splitters	WTC16HDAPBD

RACK MOUNT ENCLOSURES

DESCRIPTION	OCC PART #
1U HD Rack Mount Enclosure, Holds 4 HD Adapter Plates & Up to 1 Splitter	RTS1U-HD4APB
2U HD Rack Mount Enclosure, Holds 8 HD Adapter Plates & Up to 3 Splitters	RTS2U-HD8APB
4U HD Rack Mount Enclosure, Holds 16 HD Adapter Plates & Up to 6 Splitters	RTS4U-HD16APB



ENCLOSURES, ADAPTER PLATES & INSERTS

IN-WALL RESIDENTIAL / MDU ENCLOSURES

MSDE RF TRANSPARENT ENCLOSURES & ACCESSORIES

DESCRIPTION	OCC PART #
15" Residential/MDU Enclosure & Door (18.48"W x 17.89"H)	MSDE15P
30" Residential/MDU Enclosure & Door (18.53"W x 32.94"H)	MSDE30P
Enclosure Lock	MSDEP-LOCK
Network Equipment Mounting Bracket (3"H x 6.5"W)	MSDEP-NBKT



MSDE VOICE DISTRIBUTION MODULES

DESCRIPTION	OCC PART #
Voice Distribution Module, 4-Line Input x 6 Outputs	MODP-T406
Voice Distribution Module, 4-Line Input x 8 Outputs	MODP-T408
Voice Distribution Module, 4-Line Input x 10 Outputs	MODP-T410



MSDE DATA DISTRIBUTION MODULES

DESCRIPTION	OCC PART #
Category 6 Data Distribution Module, 4-Port	MODP6-DB4
Category 6 Data Distribution Module, 5-Port	MODP6-DB5
Category 6 Data Distribution Module, 6-Port	MODP6-DB6
Category 6 Data Distribution Module, 7-Port	MODP6-DB7
Category 6 Data Distribution Module, 8-Port	MODP6-DB8
Category 5e Data Distribution Module, 4-Port	MODP-DB4
Category 5e Data Distribution Module, 5-Port	MODP-DB5
Category 5e Data Distribution Module, 6-Port	MODP-DB6
Category 5e Data Distribution Module, 7-Port	MODP-DB7
Category 5e Data Distribution Module, 8-Port	MODP-DB8



RF VIDEO DISTRIBUTION MODULES

DESCRIPTION	OCC PART #
Passive CATV Splitter, Bi-Directional, Digital, 1 GHz, 4-Way	MODP-V4
Passive CATV Splitter, Bi-Directional, Digital, 1 GHz, 6-Way	MODP-V6



12-PORT KMJ MOUNTING BRACKET

DESCRIPTION	OCC PART #
Mounting Bracket, 12-Port, KMJ, Unloaded	MODP-12BKT



*Sold as empty bracket only, KMJ Jacks must be ordered separately.



CUSTOMER SUPPORT & WARRANTY INFORMATION

TECHNICAL AND DESIGN-BUILD EXPERTISE

Instead of relying on OCC just for products, more and more of our customers rely on our design-build expertise. Our design engineers and technical staff provide unprecedented service, support, and assistance.

ONE-STOP SHOP

Since we provide one of the largest network-solutions portfolios in the industry, many of our customers rely on OCC as their one-source solutions provider. From the most reliable end-to-end cabling and connectivity systems, down to the shortest patch cable, we can meet your every network need.

CUSTOMER-DERIVED INNOVATIONS

We partner with you, our customer, and listen to your needs. Thanks to our customers, we've designed, innovated, and customized some of the best solutions in the industry, providing the speed, immediate scalability, space savings, and ultra-high performance demanded by zero-downtime networks of all sizes.

COMPETITIVE WARRANTY PROGRAMS

OCC, in conjunction with certified Multimedia Design and Integration Specialist (MDIS) installers around the world, is able to offer various competitive warranty and extended warranty programs. OCC has developed warranty plans that offer a flexible approach to long-lasting network installations.

QUICK SHIPPING



SAME DAY SHIPPING ON IN-STOCK ITEMS IF ORDERED BY 12PM, EST.



LOCATIONS



VISIT OCCFIBER.COM

OCC ROANOKE, VA

**Corporate Headquarters and Fiber Optic Cable
Manufacturing Facility**

5290 Concourse Drive
Roanoke, VA 24019 USA

540-265-0690 or 800-622-7711

OCC DALLAS, TX

**Harsh Environment and Specialty Connectivity
Manufacturing Facility**

1700 Capital Avenue, Suite 150
Plano, TX 75074 USA

972-509-1500 or 877-509-1500

OCC ASHEVILLE, NC

**Enterprise Connectivity
Manufacturing Facility**

33 Superior Way
Swannanoa, NC 28778 USA

828-298-2260 or 800-880-7674

JOIN OUR SOCIAL NETWORK

For the most up-to-date information on all of OCC's products, news, and information, visit our website at occfiber.com. Registered users get added benefits, access to additional information and white papers, and more.



Like us on Facebook:
facebook.com/occsolutions



Follow us on Twitter:
twitter.com/occsolutions



Watch us on YouTube:
youtube.com/user/occsolutions



Follow us on LinkedIn:
linkedin.com/company/optical-cable-corporation