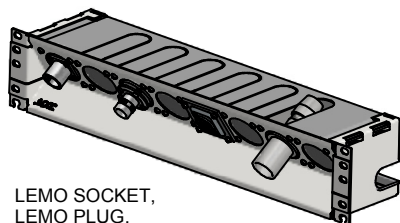
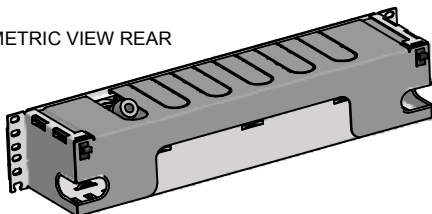


ISOMETRIC VIEW FRONT
PANEL FACING IN

LEMO SOCKET,
LEMO PLUG,
NUETRIK OPTICON,
TRIAx
4 BLANKS
SHOWN IN THIS VIEW

ISOMETRIC VIEW FRONT
PANEL FACING OUT

ISOMETRIC VIEW REAR



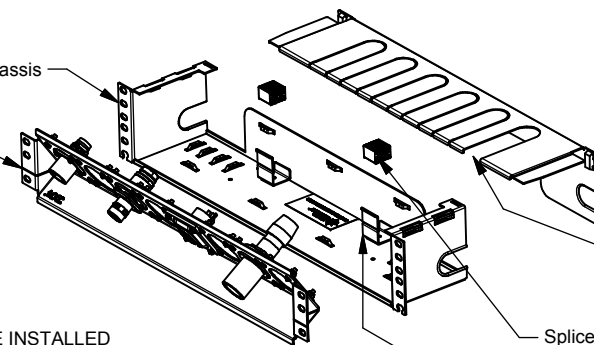
Removable Front Panel
8 Port with various connectors
shown here for Reference

AVAILABLE ISOLATION PLATES

1. BLANK
2. SMPTE
3. OPTICON
4. TRIAX

TRIAx CONNECTORS CANNOT BE INSTALLED
ON EITHER OF THE END PORTS (1 & 8)

Chassis



Breakaway Tabs
For Triax Connectors
(6 MAX)

Splice Holder

Splice Holder Bracket

REVISION HISTORY

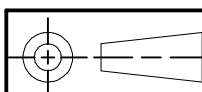
REV	DESCRIPTION	DATE	APPROVED
A	Initial Release	10/22/2020	RP

PART NUMBERING SCHEME

Part Number	Panel Type pp	Connector Type cc	Panel Orientation o	Discrete Connector dd	Splice Kit ss	Power Connector e	No of Connectors n	-	Triax ty
RC2U pp cc o dd ss e n 00 -ty	80 - 8 Port	LP - Lemo Plug	I - Facing In	00 - None	00 - No	P - Plug	1 to 8		Blank - None
	60 - 6 Port	LS - Lemo Socket	O - Facing Out	LC - LC connector	SP - Yes	R - Receptacle			T1 Thru T6 Kings Triax
		ND - Nuetrik Duo w/o Ground		SC - SC Connector		B - Blunt			A1 thru A6 ADC Triax
		NS - Nuetrik Duo w/ Ground		ST - ST Connector	For Enclosures with Triax				
		NQ - Nuetrik Quad		FC - FC Connector	Front connectors (n) + Triax (y) should be less than or equal to the Front Port Capacity				

FEATURES & BENEFITS

1. MODULAR AND CUSTOM CONFIGURABLE
2. REMOVABLE FRONT PANEL
3. REVERSABLE FRONT PANEL INWARD OR OUTWARD
4. 8 & 6 PORT FRONT PANELS AVAILABLE
5. 16 GA STEEL, POWDER COATED BLACK
6. ALL CONNECTORS ARE FULLY ISOLATED
7. SPLICE / FIBER MANAGEMENT OPTION

THIRD ANGLE
PROJECTIONDRAWN
rpenumatcha

8/17/2020

CHECKED
NG

10/22/2020

APPROVED
RP

10/22/2020

THIS DOCUMENT IS THE PROPERTY
OF OPTICAL CABLE CORPORATION
AND CONTAINS PROPRIETARY
INFORMATION AND SHALL NOT BE
DISCLOSED TO OTHERS OR
DUPLICATED IN PART OR FULL OR
USED FOR ANY OTHER PURPOSES
OTHER THAN IN SUPPORT OF OUR
VENDOR/PURCHASER
RELATIONSHIP

TOLERANCES

Unless Otherwise Specified
LINEAR ANGULAR
.X ± .05 X ± 5°
.XX ± .020 X.X ± 1°
XXX ± .010

All Dimensions are in inches
DO NOT SCALE DRAWING



1700 Capital Ave., Suite 150
Plano, TX-75074
(972)509-1500
www.occfiber.com

OPTICAL CABLE CORPORATION

FORMERLY APPLIED OPTICAL SYSTEMS

TITLE

Product Drawing, BAV Enclosure, JBT Size

SIZE
A

DWG NO

REV

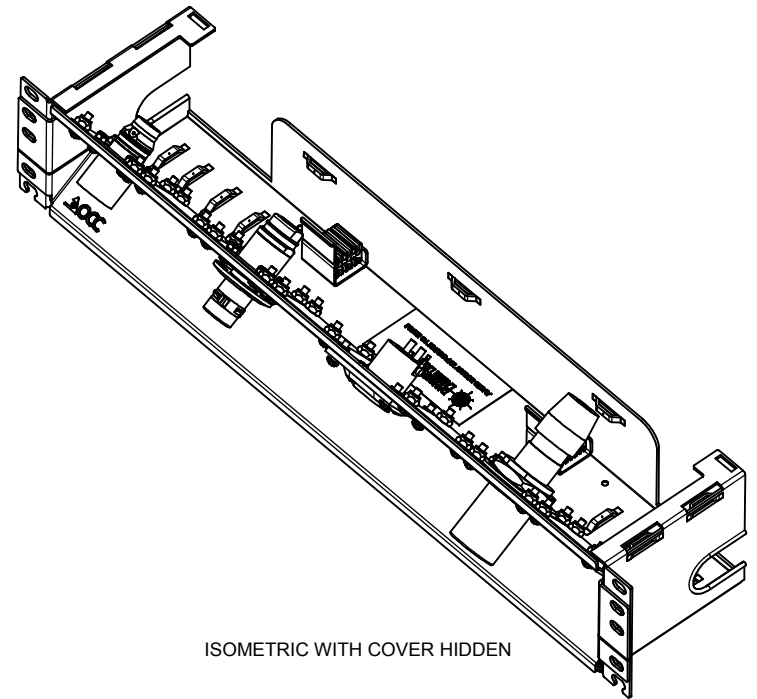
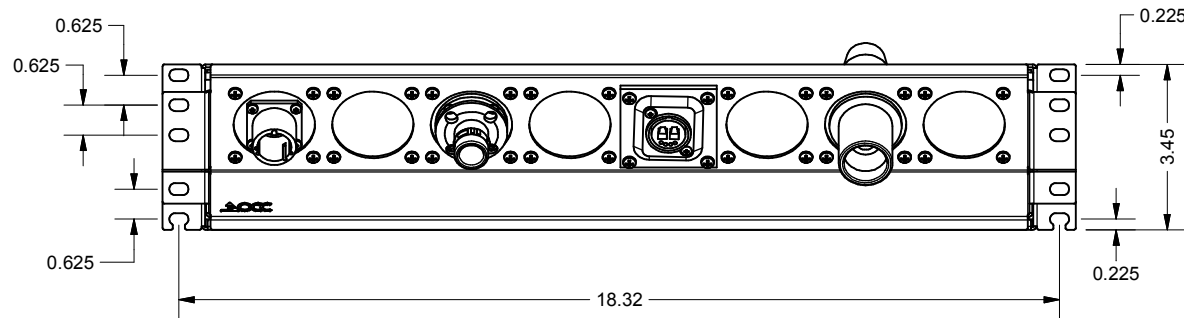
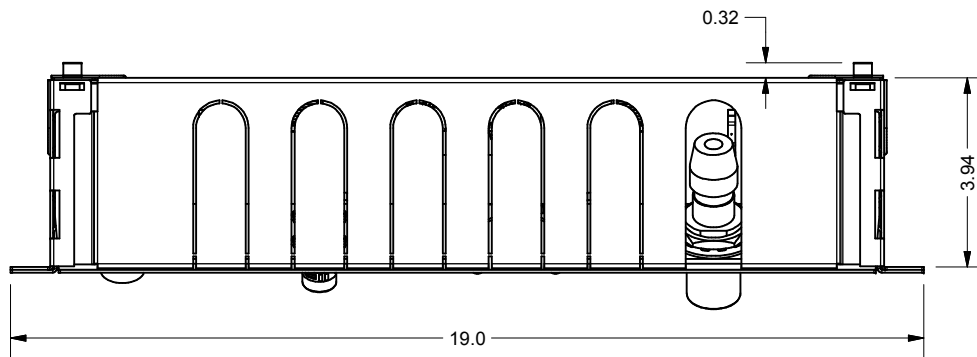
SEE CONFIGURATOR

SCALE

CAGE CODE: 335J8

DESIGN STATUS
Released

SHEET 1 OF 2



ISOMETRIC WITH COVER HIDDEN

TITLE

Product Drawing, BAV Enclosure, JBT Size

 OPTICAL CABLE CORPORATION		1700 Capital Ave., Suite 150 Plano, TX-75074 (972)509-1500 www.occfiber.com	
		FORMERLY APPLIED OPTICAL SYSTEMS	
SIZE A	DWG NO SEE CONFIGURATOR		REV A
SCALE	CAGE CODE: 335J8		SHEET 2 OF 2
	DESIGN STATUS Released		