

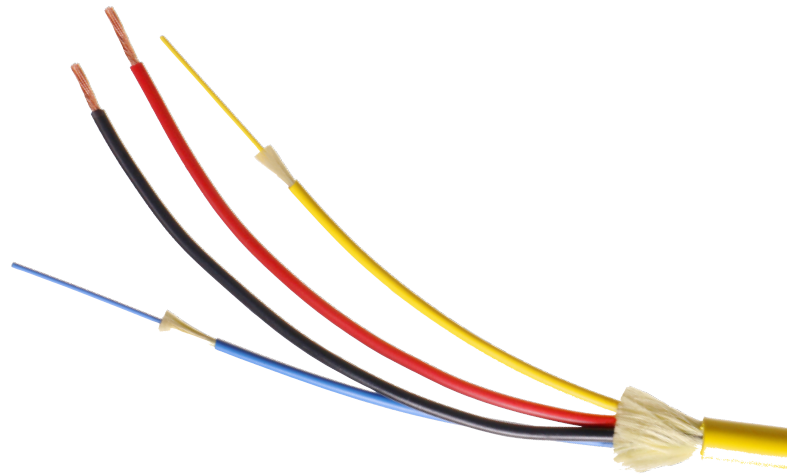
# SLIMLINE PLENUM HYBRID CABLES

OFFERING THE ROBUST PROTECTION  
YOU EXPECT FROM OCC

These small diameter hybrid cables are thinner, lighter, and more flexible than other hybrid cables on the market. Perfect for Passive Optical LAN installations, security cameras, and wireless access points. The Hybrid Slimline-Plenum can also offer additional protection in high traffic indoor applications.

## APPLICATIONS:

- > Designed for Passive Optical LAN, video camera, wireless access points, and other remote powered applications that utilize a centralized power supply to power end terminals (ONTs).
- > Two copper wires provide power from a centralized power supply to POL ONTs while single-mode fiber optic elements provide bi-directional data paths through the cable.
- > One single-mode fiber required for POL use; two single-mode fibers allow redundant paths or an in-situ spare fiber.
- > Hybrid fiber/copper cables are intended for use on Class 2 power-limited circuits as described in Article 725 of the National Electrical Code.



## CABLE CONSTRUCTION:

- > Each cable consists of individual insulated copper conductors and optical fibers located in a radially symmetrical pattern.
- > Cables also include aramid yarn for installation tensile loading.
- > Plenum-rated construction, perfect for use above suspended ceilings in offices and hotels.
- > Cables include two copper (red/black) conductors and choice of 1- or 2-fibers.



## FEATURES & BENEFITS:

- > Various combinations of copper conductors and optical fibers in a single hybrid cable.
- > Plenum-rated construction, perfect for use above suspended ceilings in offices and hotels.
- > 16, 18, 20, or 22 AWG wires available. Class-2 power limited, 300V rated wire insulation.
- > Ultra-Fox™ tight buffered fiber.
- > All single-mode fiber types available: G.652.D (SLX), G.657.A1 (SLA), G.657.A2 (SLB), and G.657.B3 (SLC).
- > Choice of 900µm buffered fibers or 900µm buffered fibers inside 2.0mm subunits. The subunits contain aramid yarn for a more robust strain relief when terminating the fiber into a connector and provide added protection in high traffic indoor applications.

## HYBRID SLIMLINE-PLENUM PHYSICAL PROPERTIES

	WEIGHT KG/KM (LB/1000')	O.D MM (IN)	MIN BEND RADIUS		TENSILE LOAD	
			INSTALLATION CM (IN)	LONGER TERM CM (IN)	INSTALLATION N (LB)	OPERATIONAL N (LB)
2x16 AWG, 900µm	55.8 (37.4)	6.0 (0.24)	6.0 (2.4)	12.0 (4.7)	340 (77)	102 (23)
2x18 AWG, 900µm	48.9 (32.8)	6.0 (0.24)	6.0 (2.4)	12.0 (4.7)	270 (60)	81 (18)
2x20 AWG, 900µm	41.9 (28.1)	5.5 (0.22)	5.5 (2.2)	11.0 (4.3)	227 (51)	68 (15)
2x22 AWG, 900µm	35.0 (23.5)	4.6 (0.18)	4.6 (1.8)	9.2 (3.6)	206 (46)	62 (14)
2x16 AWG, 2.0mm	57.5 (38.6)	6.7 (0.26)	6.7 (2.6)	13.4 (5.3)	330 (74)	99 (22)
2x18 AWG, 2.0mm	50.6 (33.9)	5.9 (0.23)	5.9 (2.3)	11.8 (4.6)	259 (58)	78 (17)
2x20 AWG, 2.0mm	43.6 (29.4)	5.9 (0.23)	5.9 (2.3)	11.8 (4.6)	216 (49)	65 (15)
2x22 AWG, 2.0mm	36.7 (24.6)	5.5 (0.22)	5.5 (2.2)	11.0 (4.3)	195 (44)	59 (13)

## MECHANICAL AND ENVIRONMENTAL CHARACTERISTICS

Operating Temperature	0°C to +70°C
Storage Temperature	-40°C to +70°C
Crush Resistance	500 N/cm
Impact Resistance	400 impacts
Meets or exceeds ICEA S-83-596 Standard for Indoor Optical Fiber Cables	
Meets or exceeds ICEA S-120-742 Standard for Hybrid Optical Fiber and Power Cable	

## ORDERING INFORMATION

DIGIT NO:	C		O	O		S	P			9	Y	P
	1	2	3	4	5	6	7	8	9	10	11	12
	1-2	Hybrid Powered Fiber Cable with 900µm Buffered Fibers = CA Hybrid Powered Fiber Cable with 2.0mm Sub-Units = CE										
	3-5	Component Count = 003 or 004										
	6	Jacket Type: Indoor-Only Plenum = S										
	7	Denotes Slimline Hybrid Powered Fiber Cable = P										
	8-9	Component Code (See Table Below)										
	10	Ultra-Fox Fiber with 900µm Tight Buffer = 9										
	11	Standard Jacket Color: Yellow = Y										
	12	Rating: Plenum = P										

## COMPONENT CODES

- > Digit 8 Denotes the Conductor Size: D = 16 AWG, C = 18 AWG, B = 20 AWG, A = 22 AWG
- > Digit 9 Denote the Single-Mode Fiber Type: A = SLA (G.657.A1), B = SLB (G.657.A2), C = SLC (G.657.B3), X = SLX (G.652.D)

Indoor Plenum Cable with 2x SLA fibers in 2.0mm subunits and 2x 18 AWG wires:

**EXAMPLE** C E O O 4 S P C A 9 Y P

Indoor Plenum Cable with 1x SLC fiber, no subunit, and 2x 22 AWG wires:

**EXAMPLE** C A O O 3 S P A C 9 Y P

### OCC ROANOKE, VA

Corporate Headquarters and Fiber  
Optic Cable Manufacturing Facility  
5290 Concourse Drive  
Roanoke, VA 24019 USA  
540.265.0690 or 800.622.7711

### OCC DALLAS, TX

Harsh Environment and Specialty  
Connectivity Manufacturing Facility  
1700 Capital Avenue, Suite 150  
Plano, TX 75074 USA  
972.509.1500 or 877.509.1500

### OCC ASHEVILLE, NC

Enterprise Connectivity  
Manufacturing Facility  
33 Superior Way  
Swannanoa, NC 28778 USA  
828.298.2260 or 800.880.7674

VISIT US AT  
[OCCFIBER.COM](http://OCCFIBER.COM)

