

SPECIFICATIONS

FEATURES/MATERIALS:

LOCKING CUSTOM COLOR/ICON BEZELS IN A WIDE VARIETY OF COLORS AND ICONS.

CUSTOM ADAPTER PLUGS ARE AVAILABLE PROVIDE DISTINCTIVE JACK IDENTIFICATION.

ADAPTER PLUGS ARE CONSTRUCTED OF HIGH-IMPACT SELF EXTINGUISHING, UL RATED 94V-0

OPTIONAL COLORS CAN BE ORDERED BY REPLACING "XX" WITH COLOR CODE. EXAMPLE: APBLK02 = BLACK

SUBJECT TO AVAILABILITY, LEAD-TIMES AND MINIMUMS MAY APPLY.

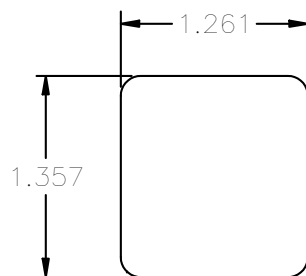
ADAPTER PLUG BEZEL COLOR CHART

00 ELECTRICAL IVORY	07 WHITE
01 OFFICE WHITE	08 ORANGE
02 BLACK	09 YELLOW
03 RED	10 PURPLE
04 GREEN	11 BROWN
05 BLUE	12 BRIGHT WHITE
06 DATA GRAY	

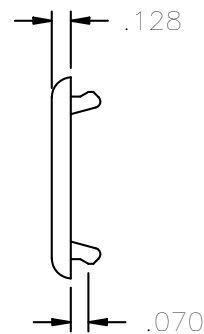
PROPOSED EIA/TIA 606

COLOR CODED IDENTIFICATION SYSTEM

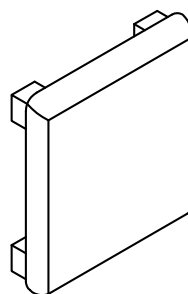
TERMINATION TYPE	COLOR	OCC COLOR CODE
DEMARCATON POINT	ORANGE	08
NETWORK COMMUNICATIONS	GREEN	04
COMMON EQUIPMENT	PURPLE	10
FIRST LEVEL BACKBONE	WHITE	07
SECOND LEVEL BACKBONE	GRAY	06
STATION	BLUE	05
INTERBUILDING BACKBONE	BROWN	11
MISCELLANEOUS	YELLOW	09
KEY TELEPHONE SYSTEMS	RED	03



FRONT VIEW



RIGHT SIDE



ISOMETRIC VIEW
P/N APBLKxx
ASSEMBLY VIEW

"OPTICAL CABLE CORPORATION (OCC) RESERVES THE RIGHT TO REVISE ANY AND ALL DESIGN SPECIFICATIONS."

UNCONTROLLED COPY

APBLK12	ADAPTER PLUG, BEZEL, BLANK, BRIGHT WHITE
APBLK11	ADAPTER PLUG, BEZEL, BLANK, BROWN
APBLK10	ADAPTER PLUG, BEZEL, BLANK, PURPLE
APBLK09	ADAPTER PLUG, BEZEL, BLANK, YELLOW
APBLK08	ADAPTER PLUG, BEZEL, BLANK, ORANGE
APBLK07	ADAPTER PLUG, BEZEL, BLANK, WHITE
APBLK06	ADAPTER PLUG, BEZEL, BLANK, GREY
APBLK05	ADAPTER PLUG, BEZEL, BLANK, BLUE
APBLK04	ADAPTER PLUG, BEZEL, BLANK, GREEN
APBLK03	ADAPTER PLUG, BEZEL, BLANK, RED
APBLK02	ADAPTER PLUG, BEZEL, BLANK, BLACK
APBLK01	ADAPTER PLUG, BEZEL, BLANK, OFFICE WHITE
APBLK00	ADAPTER PLUG, BEZEL, BLANK, ELEC. IVORY
OCC PART NO.	DESCRIPTION

UNCONTROLLED COPY			
UNLESS OTHERWISE SPECIFIED THIS DRAWING AND THE DESIGN SHOWN ARE THE PROPERTY OF OPTICAL CABLE CORPORATION AND MAY NOT BE USED AS THE BASIS FOR MANUFACTURE OR SALE WITHOUT SPECIFIC WRITTEN PERMISSION OF OPTICAL CABLE CORPORATION. DIMENSIONS ARE IN INCHES. TOLERANCES: FRACTIONS ±1/32" ANGLES ±1/2° 3 PLACE DECIMALS ±.005" 2 PLACE DECIMALS ±.01"		5290 Concourse Drive Roanoke, VA 24019 Phone: 800-622-7711 Fax: 540-265-0724 www.occfiber.com	
DRAWN D.A.HOLBERT		DATE 9/28/01	
CHECKED J.HOWE		DATE 4/21/02	
ENGINEER J.YANIK		DATE 9/28/01	
APPROVED J.CALLOWAY		DATE 6/11/23	
PREVIOUS DWG			
NEXT DWG		FILENAME C104797C.dft	
MATERIAL		DWG TITLE	
CATEGORY: THERMOPLASTIC COLOR SPECIFICATION OCC DRAWING# 100004		CUSTOMER DRAWING, ADAPTER PLUG, BEZEL, BLANK for EMPTY JACK SLOT	
FINISH		SIZE	
MT1055-5(MED EDM) POLISHED (UNLESS OTHERWISE INDICATED)		B	
THIRD ANGLE PROJECTION 		DWG NO. C104797	
CRITICAL DIMENSION CODE (F) = FUNCTION (M) = MATING (A) = AUDIT		REV C	
		SCALE: NONE SHEET 1 OF 1	

PROPRIETARY AND CONFIDENTIAL