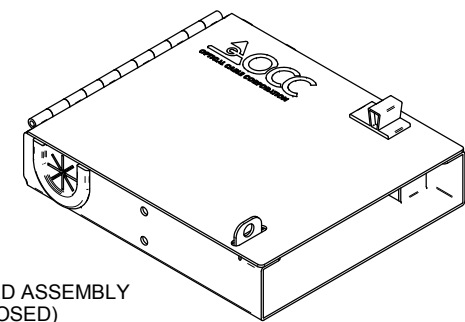
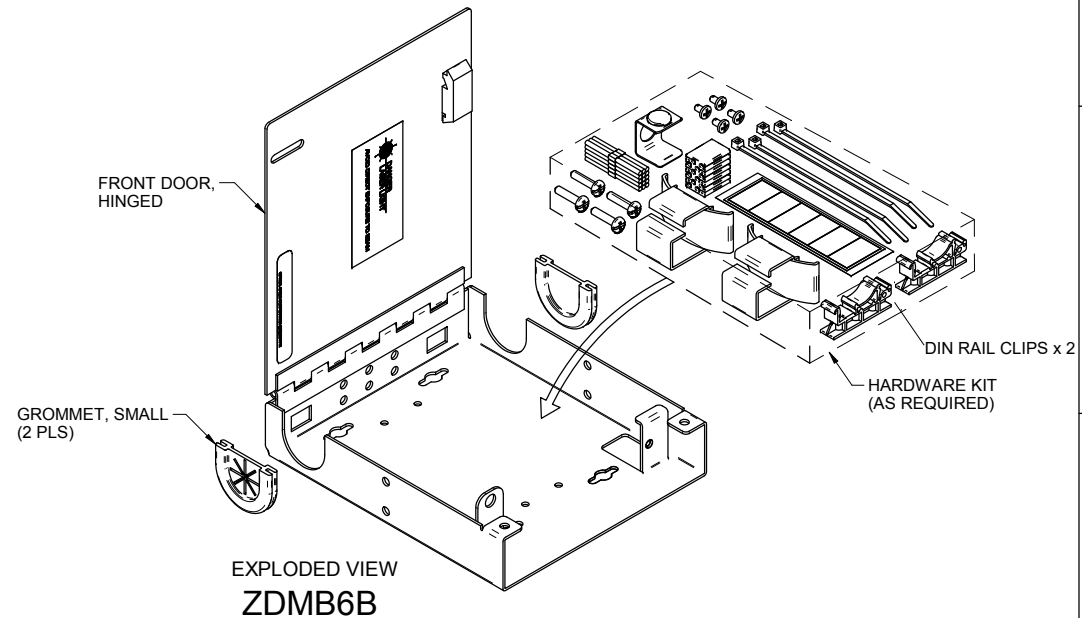
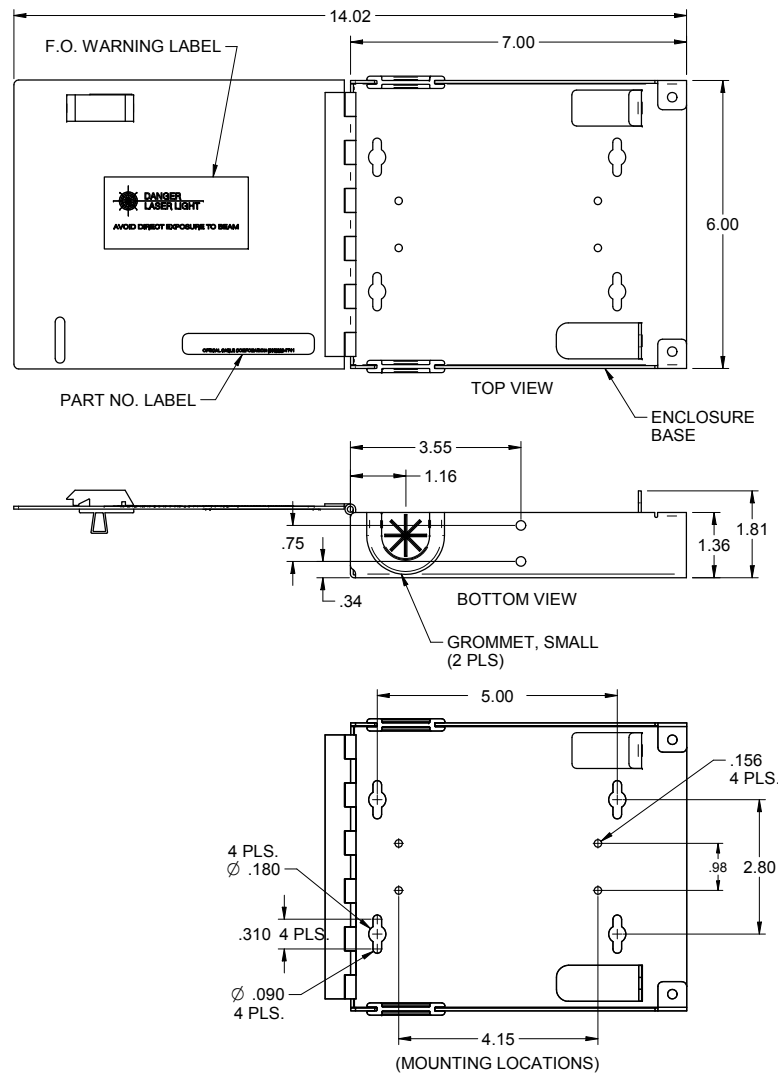



ZDMB6B ENCLOSURE ASSY UNLOADED (STANDARD)

"OPTICAL CABLE CORPORATION (OCC)
RESERVES THE RIGHT TO REVISE ANY
AND ALL DESIGN SPECIFICATIONS."
UNCONTROLLED COPY



- NOTES: UNLESS OTHERWISE SPECIFIED.
1. ENCLOSURE COLOR AVAILABLE: "B"=BLACK.
2. INSTRUCTION SHEET (1) AND HARDWARE KIT (1) ARE INCLUDED IN ENCLOSURE IN AN INDIVIDUAL PACKAGE.
3. CABLE HOLDERS AND OTHER PLASTIC MATERIAL PARTS MEET UL 94 V-0 P.P.O.

THIRD ANGLE PROJECTION		UNLESS OTHERWISE SPECIFIED, DIMENSIONS ARE IN INCHES. TOLERANCES: FRACTIONS ±1/32" ANGLES ±1/2° 3 PLACE DECIMALS ±.005" 2 PLACE DECIMALS ±.01"		THIS DRAWING AND THE DESIGN SHOWN ARE THE PROPERTY OF OPTICAL CABLE CORPORATION AND MAY NOT BE USED AS THE BASIS FOR MANUFACTURE OR SALE WITHOUT SPECIFIC WRITTEN PERMISSION OF OPTICAL CABLE CORPORATION.		 33 Superior Way Swannanoa, NC 28778 Phone: 828-298-2260 Fax: 828-298-2487 www.occfiber.com	
MATERIAL SEE BILL OF MATERIAL		DRAWN D.A.HOLBERT		DATE 4/19/09		DWG TITLE	
FINISH SEE NOTES		CHECKED J.HOWE		DATE 11/21/09		ZONE DISTRIBUTION BOX (STANDARD) p/n ZDMB6B	
CRITICAL DIMENSION CODE		ENGINEER J.YANIK		DATE 4/19/09		SIZE C	
(F) = FUNCTION		APPROVED CALLOWAY		DATE 11/14/22		DWG NO. C109583	
(M) = MATING		PREVIOUS DWG		FILENAME C109583F.dft		SCALE: NONE	
(A) = AUDIT		NEXT DWG		SHEET 1 OF 1		REV F	

PROPRIETARY AND CONFIDENTIAL